

**DKK1 Antibody (N-term)**  
**Affinity Purified Rabbit Polyclonal Antibody (Pab)**  
**Catalog # AP9599a****Specification**

---

**DKK1 Antibody (N-term) - Product Information**

Application	WB,E
Primary Accession	<a href="#">O94907</a>
Reactivity	Human
Host	Rabbit
Clonality	Polyclonal
Isotype	Rabbit IgG
Calculated MW	28672
Antigen Region	58-84

**DKK1 Antibody (N-term) - Additional Information****Gene ID** 22943**Other Names**

Dickkopf-related protein 1, Dickkopf-1, Dkk-1, hDkk-1, SK, DKK1

**Target/Specificity**

This DKK1 antibody is generated from rabbits immunized with a KLH conjugated synthetic peptide between 58-84 amino acids from the N-terminal region of human DKK1.

**Dilution**

WB~~1:1000

**Format**

Purified polyclonal antibody supplied in PBS with 0.09% (W/V) sodium azide. This antibody is purified through a protein A column, followed by peptide affinity purification.

**Storage**

Maintain refrigerated at 2-8°C for up to 2 weeks. For long term storage store at -20°C in small aliquots to prevent freeze-thaw cycles.

**Precautions**

DKK1 Antibody (N-term) is for research use only and not for use in diagnostic or therapeutic procedures.

**DKK1 Antibody (N-term) - Protein Information****Name** DKK1

**Function** Antagonizes canonical Wnt signaling by inhibiting LRP5/6 interaction with Wnt and by forming a ternary complex with the transmembrane protein KREMEN that promotes internalization of LRP5/6 (PubMed:[22000856](#)). DKKs play an important role in vertebrate development, where

they locally inhibit Wnt regulated processes such as antero-posterior axial patterning, limb development, somitogenesis and eye formation. In the adult, Dkks are implicated in bone formation and bone disease, cancer and Alzheimer disease (PubMed:[17143291](#)). Inhibits the pro-apoptotic function of KREMEN1 in a Wnt-independent manner, and has anti-apoptotic activity (By similarity).

**Cellular Location**

Secreted.

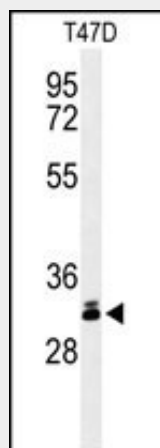
**Tissue Location**

Placenta.

**DKK1 Antibody (N-term) - Protocols**

Provided below are standard protocols that you may find useful for product applications.

- [Western Blot](#)
- [Blocking Peptides](#)
- [Dot Blot](#)
- [Immunohistochemistry](#)
- [Immunofluorescence](#)
- [Immunoprecipitation](#)
- [Flow Cytometry](#)
- [Cell Culture](#)

**DKK1 Antibody (N-term) - Images**

Western blot analysis of DKK1 Antibody (N-term) (Cat. #AP9599a) in T47D cell line lysates (35ug/lane). DKK1 (arrow) was detected using the purified Pab.

**DKK1 Antibody (N-term) - Background**

DKK1 is a protein that is a member of the dickkopf family. It is a secreted protein with two cysteine rich regions and is involved in embryonic development through its inhibition of the WNT signaling pathway. Elevated levels of DKK1 in bone marrow plasma and peripheral blood is associated with the presence of osteolytic bone lesions in patients with multiple myeloma.

**DKK1 Antibody (N-term) - References**

Piters, E., et al. Calcif. Tissue Int. 86(4):271-281(2010)

Bourhis, E., et al. J. Biol. Chem. 285(12):9172-9179(2010)