

**DGCR6 Antibody (Center)**  
**Affinity Purified Rabbit Polyclonal Antibody (Pab)**  
**Catalog # AP9607c**

**Specification**

---

**DGCR6 Antibody (Center) - Product Information**

Application	WB,E
Primary Accession	<a href="#">Q14129</a>
Other Accession	<a href="#">Q9BY27</a>
Reactivity	Human, Mouse
Host	Rabbit
Clonality	Polyclonal
Isotype	Rabbit IgG
Calculated MW	24989
Antigen Region	103-129

**DGCR6 Antibody (Center) - Additional Information**

**Gene ID** 8214

**Other Names**

Protein DGCR6, DiGeorge syndrome critical region 6, DGCR6

**Target/Specificity**

This DGCR6 antibody is generated from rabbits immunized with a KLH conjugated synthetic peptide between 103-129 amino acids from the Central region of human DGCR6.

**Dilution**

WB~~1:1000

**Format**

Purified polyclonal antibody supplied in PBS with 0.09% (W/V) sodium azide. This antibody is purified through a protein A column, followed by peptide affinity purification.

**Storage**

Maintain refrigerated at 2-8°C for up to 2 weeks. For long term storage store at -20°C in small aliquots to prevent freeze-thaw cycles.

**Precautions**

DGCR6 Antibody (Center) is for research use only and not for use in diagnostic or therapeutic procedures.

**DGCR6 Antibody (Center) - Protein Information**

**Name** DGCR6

**Function** May play a role in neural crest cell migration into the third and fourth pharyngeal pouches.

**Cellular Location**

Nucleus. Note=Predominantly nuclear

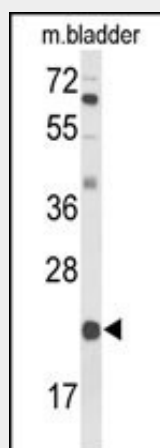
**Tissue Location**

Found in all tissues examined with highest expression in liver, heart and skeletal muscle. Lower levels in pancreas and placenta. Weak expression in brain

**DGCR6 Antibody (Center) - Protocols**

Provided below are standard protocols that you may find useful for product applications.

- [Western Blot](#)
- [Blocking Peptides](#)
- [Dot Blot](#)
- [Immunohistochemistry](#)
- [Immunofluorescence](#)
- [Immunoprecipitation](#)
- [Flow Cytometry](#)
- [Cell Culture](#)

**DGCR6 Antibody (Center) - Images**

Western blot analysis of DGCR6 Antibody (Center) (Cat. #AP9607c) in mouse bladder tissue lysates (35ug/lane). DGCR6 (arrow) was detected using the purified Pab.

**DGCR6 Antibody (Center) - Background**

DGCR6 may play a role in neural crest cell migration into the third and fourth pharyngeal pouches.

**DGCR6 Antibody (Center) - References**

Zunner, D., et al. Biochem. Biophys. Res. Commun. 393(2):185-189(2010)  
Pfuhl, T., et al. Hum. Genet. 117(1):70-80(2005)