

**CYTB Antibody (Center)**  
**Affinity Purified Rabbit Polyclonal Antibody (Pab)**  
**Catalog # AP9621c**

**Specification**

---

**CYTB Antibody (Center) - Product Information**

Application	WB,E
Primary Accession	<a href="#">P00156</a>
Reactivity	Human
Host	Rabbit
Clonality	Polyclonal
Isotype	Rabbit IgG
Calculated MW	42718
Antigen Region	201-228

**CYTB Antibody (Center) - Additional Information**

**Gene ID** 4519

**Other Names**

Cytochrome b, Complex III subunit 3, Complex III subunit III, Cytochrome b-c1 complex subunit 3, Ubiquinol-cytochrome-c reductase complex cytochrome b subunit, MT-CYB, COB, CYTB, MTCYB

**Target/Specificity**

This CYTB antibody is generated from rabbits immunized with a KLH conjugated synthetic peptide between 201-228 amino acids from the Central region of human CYTB.

**Dilution**

WB~~1:1000

**Format**

Purified polyclonal antibody supplied in PBS with 0.09% (W/V) sodium azide. This antibody is purified through a protein A column, followed by peptide affinity purification.

**Storage**

Maintain refrigerated at 2-8°C for up to 2 weeks. For long term storage store at -20°C in small aliquots to prevent freeze-thaw cycles.

**Precautions**

CYTB Antibody (Center) is for research use only and not for use in diagnostic or therapeutic procedures.

**CYTB Antibody (Center) - Protein Information**

**Name** MT-CYB

**Synonyms** COB, CYTB, MTCYB

**Function** Component of the ubiquinol-cytochrome c reductase complex (complex III or cytochrome b-c1 complex) that is part of the mitochondrial respiratory chain. The b-c1 complex mediates electron transfer from ubiquinol to cytochrome c. Contributes to the generation of a proton gradient across the mitochondrial membrane that is then used for ATP synthesis.

**Cellular Location**

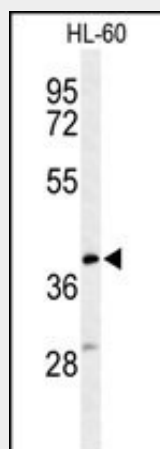
Mitochondrion inner membrane {ECO:0000250|UniProtKB:P00157}; Multi-pass membrane protein {ECO:0000250|UniProtKB:P00157}

**CYTB Antibody (Center) - Protocols**

Provided below are standard protocols that you may find useful for product applications.

- [Western Blot](#)
- [Blocking Peptides](#)
- [Dot Blot](#)
- [Immunohistochemistry](#)
- [Immunofluorescence](#)
- [Immunoprecipitation](#)
- [Flow Cytometry](#)
- [Cell Culture](#)

**CYTB Antibody (Center) - Images**



Western blot analysis of CYTB Antibody (Center) (Cat. #AP9621c) in HL-60 cell line lysates (35ug/lane). CYTB (arrow) was detected using the purified Pab.

**CYTB Antibody (Center) - Background**

Component of the ubiquinol-cytochrome c reductase complex (complex III or cytochrome b-c1 complex), which is a respiratory chain that generates an electrochemical potential coupled to ATP synthesis (By similarity).

**CYTB Antibody (Center) - References**

Andrews, R.M., et al. Nat. Genet. 23 (2), 147 (1999)  
Anderson, S., et al. Nature 290(5806):457-465(1981)