

CYTH3 Antibody (C-term)
Affinity Purified Rabbit Polyclonal Antibody (Pab)
Catalog # AP9673B**Specification**

CYTH3 Antibody (C-term) - Product Information

Application	WB,E
Primary Accession	O43739
Other Accession	P97696 , O08967
Reactivity	Human, Mouse
Predicted	Rat
Host	Rabbit
Clonality	Polyclonal
Isotype	Rabbit IgG
Antigen Region	371-400

CYTH3 Antibody (C-term) - Additional Information**Gene ID** 9265**Other Names**

Cytohesin-3, ARF nucleotide-binding site opener 3, Protein ARNO3, General receptor of phosphoinositides 1, Grp1, PH, SEC7 and coiled-coil domain-containing protein 3, CYTH3, ARNO3, GRP1, PSCD3

Target/Specificity

This CYTH3 antibody is generated from rabbits immunized with a KLH conjugated synthetic peptide between 371-400 amino acids from the C-terminal region of human CYTH3.

Dilution

WB~~1:1000

Format

Purified polyclonal antibody supplied in PBS with 0.09% (W/V) sodium azide. This antibody is purified through a protein A column, followed by peptide affinity purification.

Storage

Maintain refrigerated at 2-8°C for up to 2 weeks. For long term storage store at -20°C in small aliquots to prevent freeze-thaw cycles.

Precautions

CYTH3 Antibody (C-term) is for research use only and not for use in diagnostic or therapeutic procedures.

CYTH3 Antibody (C-term) - Protein Information**Name** CYTH3 ([HGNC:9504](#))

Synonyms ARNO3, GRP1, PSCD3

Function Promotes guanine-nucleotide exchange on ARF1 and ARF6. Promotes the activation of ARF factors through replacement of GDP with GTP. Plays a role in the epithelial polarization (By similarity).

Cellular Location

Cytoplasm, cytosol. Cell membrane {ECO:0000250|UniProtKB:O08967}; Peripheral membrane protein {ECO:0000250|UniProtKB:O08967}. Cell junction, adherens junction {ECO:0000250|UniProtKB:O08967}. Cell junction, tight junction {ECO:0000250|UniProtKB:O08967}. Note=Translocates from the cytosol to membranes enriched in phosphatidylinositol 3,4,5-trisphosphate {ECO:0000250|UniProtKB:O08967}

Tissue Location

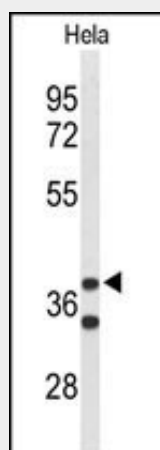
Almost absent from liver, thymus and peripheral blood lymphocytes

CYTH3 Antibody (C-term) - Protocols

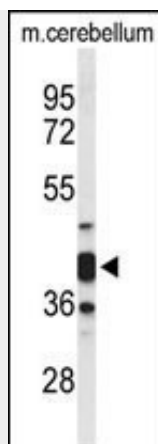
Provided below are standard protocols that you may find useful for product applications.

- [Western Blot](#)
- [Blocking Peptides](#)
- [Dot Blot](#)
- [Immunohistochemistry](#)
- [Immunofluorescence](#)
- [Immunoprecipitation](#)
- [Flow Cytometry](#)
- [Cell Culture](#)

CYTH3 Antibody (C-term) - Images



Western blot analysis of CYTH3 Antibody (C-term) (Cat. #AP9673b) in HeLa cell line lysates (35ug/lane). CYTH3 (arrow) was detected using the purified Pab;



Western blot analysis of CYTH3 Antibody (C-term) (Cat. #AP9673b) in mouse cerebellum tissue lysates (35ug/lane). CYTH3 (arrow) was detected using the purified Pab.

CYTH3 Antibody (C-term) - Background

This gene encodes a member of the PSCD (pleckstrin homology, Sec7 and coiled-coil domains) family. PSCD family members have identical structural organization that consists of an N-terminal coiled-coil motif, a central Sec7 domain, and a C-terminal pleckstrin homology (PH) domain. The coiled-coil motif is involved in homodimerization, the Sec7 domain contains guanine-nucleotide exchange protein (GEP) activity, and the PH domain interacts with phospholipids and is responsible for association of PSCDs with membranes. Members of this family appear to mediate the regulation of protein sorting and membrane trafficking. This encoded protein is involved in the control of Golgi structure and function, and it may have a physiological role in regulating ADP-ribosylation factor protein 6 (ARF) functions, in addition to acting on ARF1.

CYTH3 Antibody (C-term) - References

- Morishige, M., et al. Nat. Cell Biol. 10(1):85-92(2008)
- Poirier, M.B., et al. Mol. Endocrinol. 19(8):1991-2005(2005)
- Nevrivy, D.J., et al. J. Biol. Chem. 275(22):16827-16836(2000)
- Ogasawara, M., et al. J. Biol. Chem. 275(5):3221-3230(2000)