

FLVC2 Antibody (C-term)
Affinity Purified Rabbit Polyclonal Antibody (Pab)
Catalog # AP9680b

Specification

FLVC2 Antibody (C-term) - Product Information

Application	WB,E
Primary Accession	Q9UPI3
Reactivity	Human
Host	Rabbit
Clonality	Polyclonal
Isotype	Rabbit IgG
Calculated MW	57241
Antigen Region	478-507

FLVC2 Antibody (C-term) - Additional Information

Gene ID 55640

Other Names

Feline leukemia virus subgroup C receptor-related protein 2, Calcium-chelate transporter, CCT, FLVCR2, C14orf58

Target/Specificity

This FLVC2 antibody is generated from rabbits immunized with a KLH conjugated synthetic peptide between 478-507 amino acids from the C-terminal region of human FLVC2.

Dilution

WB~~1:1000

Format

Purified polyclonal antibody supplied in PBS with 0.09% (W/V) sodium azide. This antibody is purified through a protein A column, followed by peptide affinity purification.

Storage

Maintain refrigerated at 2-8°C for up to 2 weeks. For long term storage store at -20°C in small aliquots to prevent freeze-thaw cycles.

Precautions

FLVC2 Antibody (C-term) is for research use only and not for use in diagnostic or therapeutic procedures.

FLVC2 Antibody (C-term) - Protein Information

Name FLVCR2

Synonyms C14orf58

Function Putative heme b importer/sensor involved in heme homeostasis in response to the metabolic state of the cell and to diet. May act as a sensor of cytosolic and/or mitochondrial heme levels to regulate mitochondrial respiration processes, ATP synthesis and thermogenesis. At low heme levels, interacts with components of electron transfer chain (ETC) complexes and ATP2A2, leading to ubiquitin-mediated degradation of ATP2A2 and inhibition of thermogenesis. Upon heme binding, dissociates from ETC complexes to allow switching from mitochondrial ATP synthesis to thermogenesis. Alternatively, in coordination with ATP2A2 may mediate calcium transport and signaling in response to heme.

Cellular Location

Mitochondrion membrane; Multi-pass membrane protein. Endoplasmic reticulum membrane; Multi-pass membrane protein. Cell membrane; Multi-pass membrane protein. Note=Primarily resides in mitochondria where it interacts with components of the electron transfer chain complexes III, IV and V. Colocalizes with ATP2A2 at the mitochondrial- ER contact junction.

Tissue Location

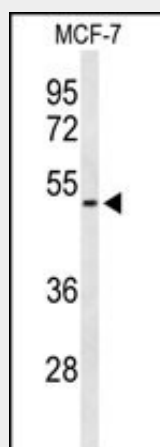
Expressed in non-hematopoietic tissues, with relative abundant expression in brain, placenta, lung, liver and kidney (PubMed:20823265). Also expressed in hematopoietic tissues (fetal liver, spleen, lymph node, thymus, leukocytes and bone marrow) (PubMed:20823265). Found in acidophil cells of the pituitary that secrete growth hormone and prolactin (at protein level) (PubMed:14729055).

FLVC2 Antibody (C-term) - Protocols

Provided below are standard protocols that you may find useful for product applications.

- [Western Blot](#)
- [Blocking Peptides](#)
- [Dot Blot](#)
- [Immunohistochemistry](#)
- [Immunofluorescence](#)
- [Immunoprecipitation](#)
- [Flow Cytometry](#)
- [Cell Culture](#)

FLVC2 Antibody (C-term) - Images



Western blot analysis of FLVC2 Antibody (C-term) (Cat. #AP9680b) in MCF-7 cell line lysates (35ug/lane). FLVC2 (arrow) was detected using the purified Pab.

FLVC2 Antibody (C-term) - Background

The FLVCR2 gene encodes a transmembrane protein that belongs to the major facilitator superfamily of secondary carriers that transport small solutes in response to chemiosmotic ion gradients, such as calcium.

FLVC2 Antibody (C-term) - References

Meyer, E., et al. Am. J. Hum. Genet. 86(3):471-478(2010)
Brown, J.K., et al. J. Virol. 80(4):1742-1751(2006)
Brasier, G., et al. Exp. Cell Res. 293(1):31-42(2004)
Heilig, R., et al. Nature 421(6923):601-607(2003)