

**PSMG2 Antibody (C-term)**  
**Affinity Purified Rabbit Polyclonal Antibody (Pab)**  
**Catalog # AP9698B**

**Specification**

---

**PSMG2 Antibody (C-term) - Product Information**

Application	WB,E
Primary Accession	<a href="#">Q969U7</a>
Reactivity	Human
Host	Rabbit
Clonality	Polyclonal
Isotype	Rabbit IgG
Calculated MW	29396
Antigen Region	217-246

**PSMG2 Antibody (C-term) - Additional Information**

**Gene ID** 56984

**Other Names**

Proteasome assembly chaperone 2, PAC-2, Hepatocellular carcinoma-susceptibility protein 3, Tumor necrosis factor superfamily member 5-induced protein 1, PSMG2  
{ECO:0000312|EMBL:AAH133561}

**Target/Specificity**

This PSMG2 antibody is generated from rabbits immunized with a KLH conjugated synthetic peptide between 217-246 amino acids from the C-terminal region of human PSMG2.

**Dilution**

WB~~1:1000

**Format**

Purified polyclonal antibody supplied in PBS with 0.09% (W/V) sodium azide. This antibody is purified through a protein A column, followed by peptide affinity purification.

**Storage**

Maintain refrigerated at 2-8°C for up to 2 weeks. For long term storage store at -20°C in small aliquots to prevent freeze-thaw cycles.

**Precautions**

PSMG2 Antibody (C-term) is for research use only and not for use in diagnostic or therapeutic procedures.

**PSMG2 Antibody (C-term) - Protein Information**

**Name** PSMG2 {ECO:0000312|EMBL:AAH13356.1}

**Function** Chaperone protein which promotes assembly of the 20S proteasome as part of a

heterodimer with PSMG1. The PSMG1-PSMG2 heterodimer binds to the PSMA5 and PSMA7 proteasome subunits, promotes assembly of the proteasome alpha subunits into the heteroheptameric alpha ring and prevents alpha ring dimerization.

**Cellular Location**

Nucleus {ECO:0000250|UniProtKB:Q9EST4}.

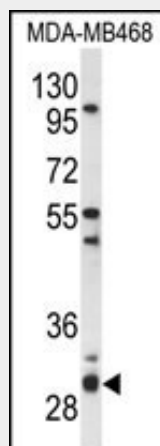
**Tissue Location**

Widely expressed with highest levels in lung, brain and colon. Moderately expressed in muscle, stomach, spleen and heart Weakly expressed in small intestine, pancreas and liver. Highly expressed in hepatocellular carcinomas with low levels in surrounding liver tissue.

**PSMG2 Antibody (C-term) - Protocols**

Provided below are standard protocols that you may find useful for product applications.

- [Western Blot](#)
- [Blocking Peptides](#)
- [Dot Blot](#)
- [Immunohistochemistry](#)
- [Immunofluorescence](#)
- [Immunoprecipitation](#)
- [Flow Cytometry](#)
- [Cell Culture](#)

**PSMG2 Antibody (C-term) - Images**

Western blot analysis of PSMG2 Antibody (C-term) (Cat. #AP9698b) in MDA-MB468 cell line lysates (35ug/lane). PSMG2 (arrow) was detected using the purified Pab.

**PSMG2 Antibody (C-term) - Background**

Chaperone protein which promotes assembly of the 20S proteasome as part of a heterodimer with PSMG1. The PSMG1-PSMG2 heterodimer binds to the PSMA5 and PSMA7 proteasome subunits, promotes assembly of the proteasome alpha subunits into the heteroheptameric alpha ring and prevents alpha ring dimerization.

**PSMG2 Antibody (C-term) - References**

Cooper, J.D., et al. Nat. Genet. 40(12):1399-1401(2008)

Barrett, J.C., et al. Nat. Genet. 40(8):955-962(2008)  
Miyagawa, H., et al. Rheumatology (Oxford) 47(2):158-164(2008)  
Parkes, M., et al. Nat. Genet. 39(7):830-832(2007)