

**HFE2 Antibody (Center)**  
**Affinity Purified Rabbit Polyclonal Antibody (Pab)**  
**Catalog # AP9699c****Specification**

---

**HFE2 Antibody (Center) - Product Information**

|                   |                        |
|-------------------|------------------------|
| Application       | WB, IHC-P,E            |
| Primary Accession | <a href="#">Q6ZVN8</a> |
| Reactivity        | Human                  |
| Host              | Rabbit                 |
| Clonality         | Polyclonal             |
| Isotype           | Rabbit IgG             |
| Calculated MW     | 45080                  |
| Antigen Region    | 134-162                |

**HFE2 Antibody (Center) - Additional Information****Gene ID** 148738**Other Names**

Hemojuvelin, Hemochromatosis type 2 protein, RGM domain family member C, HFE2, HJV, RGM C

**Target/Specificity**

This HFE2 antibody is generated from rabbits immunized with a KLH conjugated synthetic peptide between 134-162 amino acids from the Central region of human HFE2.

**Dilution**WB~~1:1000  
IHC-P~~1:50~100**Format**

Purified polyclonal antibody supplied in PBS with 0.09% (W/V) sodium azide. This antibody is purified through a protein A column, followed by peptide affinity purification.

**Storage**

Maintain refrigerated at 2-8°C for up to 2 weeks. For long term storage store at -20°C in small aliquots to prevent freeze-thaw cycles.

**Precautions**

HFE2 Antibody (Center) is for research use only and not for use in diagnostic or therapeutic procedures.

**HFE2 Antibody (Center) - Protein Information****Name** HJV ([HGNC:4887](#))**Synonyms** HFE2, RGM C

**Function** Acts as a bone morphogenetic protein (BMP) coreceptor (PubMed:[18976966](#)). Through enhancement of BMP signaling regulates hepcidin (HAMP) expression and regulates iron homeostasis (PubMed:[18976966](#)).

**Cellular Location**

Cell membrane; Lipid-anchor, GPI- anchor. Note=Also released in the extracellular space

**Tissue Location**

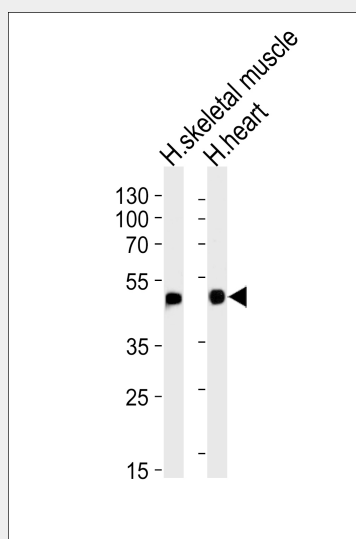
Adult and fetal liver, heart, and skeletal muscle.

## HFE2 Antibody (Center) - Protocols

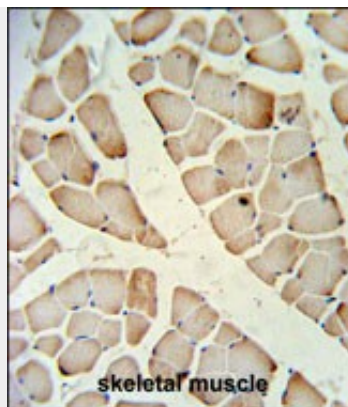
Provided below are standard protocols that you may find useful for product applications.

- [Western Blot](#)
- [Blocking Peptides](#)
- [Dot Blot](#)
- [Immunohistochemistry](#)
- [Immunofluorescence](#)
- [Immunoprecipitation](#)
- [Flow Cytometry](#)
- [Cell Culture](#)

## HFE2 Antibody (Center) - Images



Western blot analysis of lysates from human skeletal muscle and heart tissue lysates (from left to right), using HFE2 Antibody (Center)(Cat. #AP9699c). AP9699c was diluted at 1:1000 at each lane. A goat anti-rabbit IgG H&L(HRP) at 1:5000 dilution was used as the secondary antibody. Lysates at 35ug per lane.



HFE2 Antibody (Center) (Cat. #AP9699c) IHC analysis in formalin fixed and paraffin embedded skeletal muscle followed by peroxidase conjugation of the secondary antibody and DAB staining. This data demonstrates the use of the HFE2 Antibody (Center) for immunohistochemistry. Clinical relevance has not been evaluated.

#### **HFE2 Antibody (Center) - Background**

HFE2 is involved in iron metabolism. It may be a component of the signaling pathway which activates hepcidin or it may act as a modulator of hepcidin expression. It could also represent the cellular receptor for hepcidin.

#### **HFE2 Antibody (Center) - References**

Zhu, X., et al. Genet. Epidemiol. 34(2):171-187(2010)  
Barton, J.C., et al. Am. J. Hematol. 84(11):710-714(2009)  
Zhang, A.S., et al. J. Biol. Chem. 284(34):22580-22589(2009)