

**TMIE Antibody (Center)**  
**Affinity Purified Rabbit Polyclonal Antibody (Pab)**  
**Catalog # AP9761c****Specification**

---

**TMIE Antibody (Center) - Product Information**

Application	WB,E
Primary Accession	<a href="#">Q8NEW7</a>
Other Accession	<a href="#">Q8K467</a>
Reactivity	Human, Mouse
Predicted	Mouse
Host	Rabbit
Clonality	Polyclonal
Isotype	Rabbit IgG
Calculated MW	17241
Antigen Region	71-100

**TMIE Antibody (Center) - Additional Information****Gene ID** 259236**Other Names**

Transmembrane inner ear expressed protein, TMIE

**Target/Specificity**

This TMIE antibody is generated from rabbits immunized with a KLH conjugated synthetic peptide between 71-100 amino acids from the Central region of human TMIE.

**Dilution**

WB~~1:1000

**Format**

Purified polyclonal antibody supplied in PBS with 0.09% (W/V) sodium azide. This antibody is purified through a protein A column, followed by peptide affinity purification.

**Storage**

Maintain refrigerated at 2-8°C for up to 2 weeks. For long term storage store at -20°C in small aliquots to prevent freeze-thaw cycles.

**Precautions**

TMIE Antibody (Center) is for research use only and not for use in diagnostic or therapeutic procedures.

**TMIE Antibody (Center) - Protein Information****Name** TMIE**Function** Unknown. The protein may play some role in a cellular membrane location. May reside

within an internal membrane compartment and function in pathways such as those involved in protein and/or vesicle trafficking. Alternatively, the mature protein may be localized in the plasma membrane and serve as a site of interaction for other molecules through its highly charged C-terminal domain.

**Cellular Location**

Membrane; Single-pass type I membrane protein

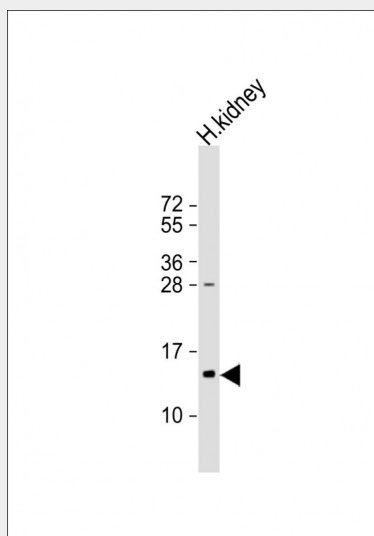
**Tissue Location**

Expressed in many tissues.

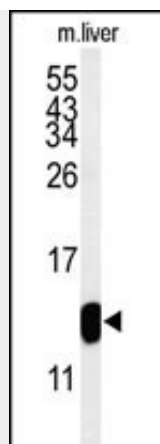
**TMIE Antibody (Center) - Protocols**

Provided below are standard protocols that you may find useful for product applications.

- [Western Blot](#)
- [Blocking Peptides](#)
- [Dot Blot](#)
- [Immunohistochemistry](#)
- [Immunofluorescence](#)
- [Immunoprecipitation](#)
- [Flow Cytometry](#)
- [Cell Culture](#)

**TMIE Antibody (Center) - Images**

Anti-TMIE Antibody (Center) at 1:1000 dilution + human kidney lysate Lysates/proteins at 20 µg per lane. Secondary Goat Anti-Rabbit IgG, (H+L), Peroxidase conjugated at 1/10000 dilution. Predicted band size : 17 kDa Blocking/Dilution buffer: 5% NFDM/TBST.



Western blot analysis of TMIE Antibody (Center) (Cat. #AP9761c) in mouse liver tissue lysates (35ug/lane). TMIE (arrow) was detected using the purified Pab.

#### **TMIE Antibody (Center) - Background**

This gene encodes a transmembrane inner ear protein. Studies in mouse suggest that this gene is required for normal postnatal maturation of sensory hair cells in the cochlea, including correct development of stereocilia bundles. This gene is one of multiple genes responsible for recessive non-syndromic deafness (DFNB), also known as autosomal recessive nonsyndromic hearing loss (ARNSHL), the most common form of congenitally acquired inherited hearing impairment.

#### **TMIE Antibody (Center) - References**

Yang, J.J., et al. Int. J. Pediatr. Otorhinolaryngol. (2010) In press  
Sirmaci, A., et al. Clin. Genet. 75(6):562-567(2009)  
Santos, R.L., et al. J. Mol. Med. 84(3):226-231(2006)  
Cho, K.I., et al. Comp. Med. 53(6):642-648(2003)  
Naz, S., et al. Am. J. Hum. Genet. 71(3):632-636(2002)  
Mitchem, K.L., et al. Hum. Mol. Genet. 11(16):1887-1898(2002)