

**GNRH2 Antibody (Center)**  
**Affinity Purified Rabbit Polyclonal Antibody (Pab)**  
**Catalog # AP9784c****Specification**

---

**GNRH2 Antibody (Center) - Product Information**

Application	WB, FC,E
Primary Accession	<a href="#">O43555</a>
Reactivity	Human
Host	Rabbit
Clonality	Polyclonal
Isotype	Rabbit IgG
Calculated MW	12918
Antigen Region	26-53

**GNRH2 Antibody (Center) - Additional Information****Gene ID** 2797**Other Names**

Progonadoliberin-2, Progonadoliberin II, Gonadoliberin-2, Gonadoliberin II, Gonadotropin-releasing hormone II, GnRH II, Luliberin II, Luteinizing hormone-releasing hormone II, LH-RH II, GnRH-associated peptide 2, GnRH-associated peptide II, GNRH2

**Target/Specificity**

This GNRH2 antibody is generated from rabbits immunized with a KLH conjugated synthetic peptide between 26-53 amino acids from the Central region of human GNRH2.

**Dilution**

WB~~1:1000  
FC~~1:10~50

**Format**

Purified polyclonal antibody supplied in PBS with 0.09% (W/V) sodium azide. This antibody is purified through a protein A column, followed by peptide affinity purification.

**Storage**

Maintain refrigerated at 2-8°C for up to 2 weeks. For long term storage store at -20°C in small aliquots to prevent freeze-thaw cycles.

**Precautions**

GNRH2 Antibody (Center) is for research use only and not for use in diagnostic or therapeutic procedures.

**GNRH2 Antibody (Center) - Protein Information****Name** GNRH2

**Function** Stimulates the secretion of gonadotropins; it stimulates the secretion of both luteinizing and follicle-stimulating hormones.

**Cellular Location**  
Secreted.

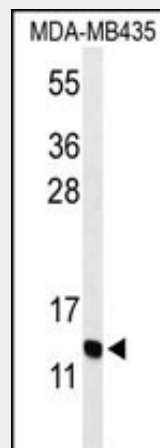
**Tissue Location**  
Midbrain; expressed at significantly higher levels outside the brain (up to 30-fold), particularly in the kidney, bone marrow and prostate

### **GNRH2 Antibody (Center) - Protocols**

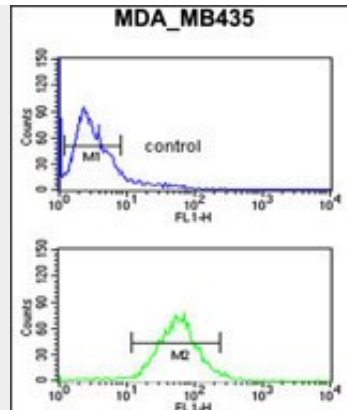
Provided below are standard protocols that you may find useful for product applications.

- [Western Blot](#)
- [Blocking Peptides](#)
- [Dot Blot](#)
- [Immunohistochemistry](#)
- [Immunofluorescence](#)
- [Immunoprecipitation](#)
- [Flow Cytometry](#)
- [Cell Culture](#)

### **GNRH2 Antibody (Center) - Images**



Western blot analysis of GNRH2 Antibody (Center) (Cat. #AP9784c) in MDA-MB435 cell line lysates (35ug/lane). GNRH2 (arrow) was detected using the purified Pab.



GNRH2 Antibody (Center) (Cat. #AP9784c) flow cytometric analysis of MDA-MB435 cells (bottom histogram) compared to a negative control cell (top histogram). FITC-conjugated goat-anti-rabbit secondary antibodies were used for the analysis.

### **GNRH2 Antibody (Center) - Background**

The protein encoded by this gene is a preproprotein that is cleaved to form a secreted 10 aa peptide hormone. The secreted decapeptide regulates reproduction in females by stimulating the secretion of both luteinizing- and follicle-stimulating hormones.

### **GNRH2 Antibody (Center) - References**

- Yerges, L.M., et al. J. Bone Miner. Res. 24(12):2039-2049(2009)
- Poon, S.L., et al. Mol. Endocrinol. 23(10):1646-1656(2009)
- Gratacos, M., et al. Am. J. Med. Genet. B Neuropsychiatr. Genet. 150B (6), 808-816 (2009)
- Palmieri, R.T., et al. Cancer Epidemiol. Biomarkers Prev. 17(12):3567-3572(2008)
- Poon, S.L., et al. Endocrinology 149(10):5162-5171(2008)