

**RHG19 Antibody (Center)**  
**Affinity Purified Rabbit Polyclonal Antibody (Pab)**  
**Catalog # AP9811c**

**Specification**

---

**RHG19 Antibody (Center) - Product Information**

Application	WB, FC,E
Primary Accession	<a href="#">Q14CB8</a>
Reactivity	Human
Host	Rabbit
Clonality	Polyclonal
Isotype	Rabbit IgG
Antigen Region	195-224

**RHG19 Antibody (Center) - Additional Information**

**Gene ID** 84986

**Other Names**

Rho GTPase-activating protein 19, Rho-type GTPase-activating protein 19, ARHGAP19

**Target/Specificity**

This RHG19 antibody is generated from rabbits immunized with a KLH conjugated synthetic peptide between 195-224 amino acids from the Central region of human RHG19.

**Dilution**

WB~~1:1000

FC~~1:10~50

**Format**

Purified polyclonal antibody supplied in PBS with 0.09% (W/V) sodium azide. This antibody is purified through a protein A column, followed by peptide affinity purification.

**Storage**

Maintain refrigerated at 2-8°C for up to 2 weeks. For long term storage store at -20°C in small aliquots to prevent freeze-thaw cycles.

**Precautions**

RHG19 Antibody (Center) is for research use only and not for use in diagnostic or therapeutic procedures.

**RHG19 Antibody (Center) - Protein Information**

**Name** ARHGAP19

**Function** GTPase activator for the Rho-type GTPases by converting them to an inactive GDP-bound state.

**Cellular Location**

Nucleus.

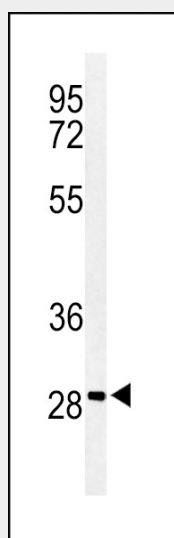
**Tissue Location**

Strong expression in fetal heart, brain, placenta, lung, liver, skeletal muscle, kidney and pancreas.  
Weak expression in adult pancreas, spleen, thymus, and ovary

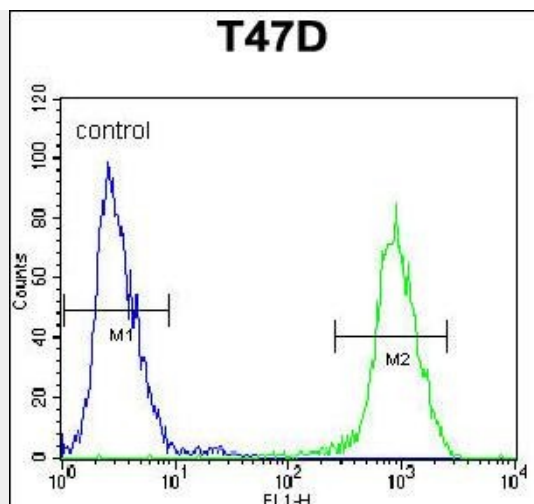
**RHG19 Antibody (Center) - Protocols**

Provided below are standard protocols that you may find useful for product applications.

- [Western Blot](#)
- [Blocking Peptides](#)
- [Dot Blot](#)
- [Immunohistochemistry](#)
- [Immunofluorescence](#)
- [Immunoprecipitation](#)
- [Flow Cytometry](#)
- [Cell Culture](#)

**RHG19 Antibody (Center) - Images**

Western blot analysis of RHG19 Antibody (Center) (Cat. #AP9811c) in T47D cell line lysates (35ug/lane). RHG19 (arrow) was detected using the purified Pab.



RHG19 Antibody (Center) (Cat. #AP9811c) flow cytometric analysis of T47D cells (right histogram) compared to a negative control cell (left histogram). FITC-conjugated goat-anti-rabbit secondary antibodies were used for the analysis.

#### **RHG19 Antibody (Center) - Background**

Members of the ARHGAP family, such as ARHGAP19, encode negative regulators of Rho GTPases (see RHOA; MIM 165390), which are involved in cell migration, proliferation, and differentiation, actin remodeling, and G1 cell cycle progression.

#### **RHG19 Antibody (Center) - References**

- Lv, L., et al. DNA Seq. 18(3):184-189(2007)
- Grupe, A., et al. Am. J. Hum. Genet. 78(1):78-88(2006)
- Deloukas, P., et al. Nature 429(6990):375-381(2004)
- Jikuya, H., et al. DNA Res. 10(1):49-57(2003)