

CAPN3 Antibody (C-term)
Purified Rabbit Polyclonal Antibody (Pab)
Catalog # AP9817b**Specification**

CAPN3 Antibody (C-term) - Product Information

Application	WB, IHC-P, FC,E
Primary Accession	P20807
Other Accession	Q9GLG7
Reactivity	Human
Predicted	Monkey
Host	Rabbit
Clonality	Polyclonal
Isotype	Rabbit IgG
Calculated MW	94254
Antigen Region	603-632

CAPN3 Antibody (C-term) - Additional Information**Gene ID** 825**Other Names**

Calpain-3, Calcium-activated neutral proteinase 3, CANP 3, Calpain L3, Calpain p94, Muscle-specific calcium-activated neutral protease 3, New calpain 1, nCL-1, CAPN3, CANP3, CANPL3, NCL1

Target/Specificity

This CAPN3 antibody is generated from rabbits immunized with a KLH conjugated synthetic peptide between 603-632 amino acids from the C-terminal region of human CAPN3.

Dilution

WB~~1:1000
IHC-P~~1:50~100
FC~~1:10~50

Format

Purified polyclonal antibody supplied in PBS with 0.09% (W/V) sodium azide. This antibody is prepared by Saturated Ammonium Sulfate (SAS) precipitation followed by dialysis against PBS.

Storage

Maintain refrigerated at 2-8°C for up to 2 weeks. For long term storage store at -20°C in small aliquots to prevent freeze-thaw cycles.

Precautions

CAPN3 Antibody (C-term) is for research use only and not for use in diagnostic or therapeutic procedures.

CAPN3 Antibody (C-term) - Protein Information

Name CAPN3 ([HGNC:1480](#))

Synonyms CANP3, CANPL3, NCL1

Function Calcium-regulated non-lysosomal thiol-protease. Proteolytically cleaves CTBP1 at 'His-409'. Mediates, with UTP25, the proteasome-independent degradation of p53/TP53 (PubMed:[23357851](#), PubMed:[27657329](#)).

Cellular Location

Cytoplasm. Nucleus, nucleolus

Tissue Location

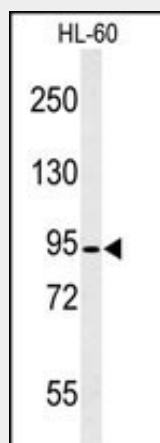
Isoform I is skeletal muscle specific.

CAPN3 Antibody (C-term) - Protocols

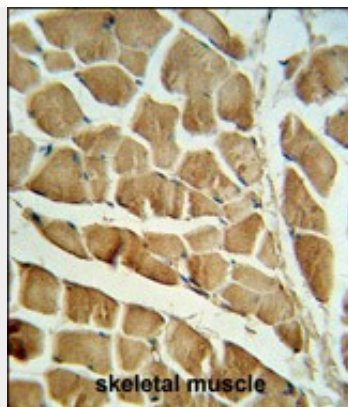
Provided below are standard protocols that you may find useful for product applications.

- [Western Blot](#)
- [Blocking Peptides](#)
- [Dot Blot](#)
- [Immunohistochemistry](#)
- [Immunofluorescence](#)
- [Immunoprecipitation](#)
- [Flow Cytometry](#)
- [Cell Culture](#)

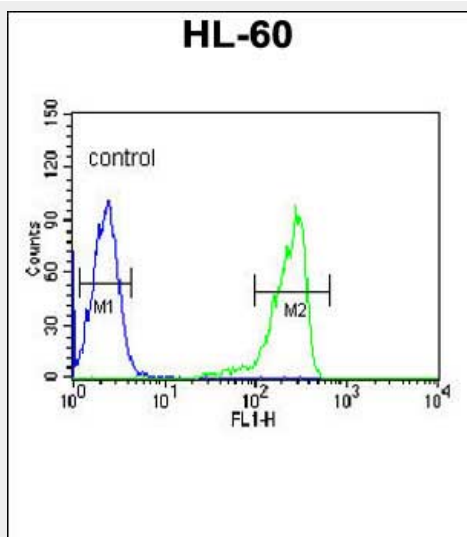
CAPN3 Antibody (C-term) - Images



Western blot analysis of CAPN3 Antibody (C-term) (Cat. #AP9817b) in HL-60 cell line lysates (35ug/lane). CAPN3 (arrow) was detected using the purified Pab.



CAPN3 Antibody (C-term) (Cat. #AP9817b) IHC analysis in formalin fixed and paraffin embedded skeletal muscle followed by peroxidase conjugation of the secondary antibody and DAB staining. This data demonstrates the use of the CAPN3 Antibody (C-term) for immunohistochemistry. Clinical relevance has not been evaluated.



CAPN3 Antibody (C-term) (Cat. #AP9817b) flow cytometric analysis of HL-60 cells (right histogram) compared to a negative control cell (left histogram). FITC-conjugated goat-anti-rabbit secondary antibodies were used for the analysis.

CAPN3 Antibody (C-term) - Background

Calpain, a heterodimer consisting of a large and a small subunit, is a major intracellular protease, although its function has not been well established. This gene encodes a muscle-specific member of the calpain large subunit family that specifically binds to titin. Mutations in this gene are associated with limb-girdle muscular dystrophies type 2A.

CAPN3 Antibody (C-term) - References

- Charlton, R., et al. Neuromuscul. Disord. 19(7):449-457(2009)
- Moretti, D., et al. Carcinogenesis 30(6):960-967(2009)
- Enjuanes, A., et al. Cancer Res. 68(24):10178-10186(2008)
- Beckmann, J.S., et al. Neuromuscul. Disord. 18(12):913-921(2008)
- Shirafuji, T., et al. Rinsho Shinkeigaku 48(9):651-655(2008)
- Diaz, B.G., et al. J. Biol. Chem. 279(26):27656-27666(2004)