

**NARFL Antibody (Center)**  
**Affinity Purified Rabbit Polyclonal Antibody (Pab)**  
**Catalog # AP9824c**

**Specification**

---

**NARFL Antibody (Center) - Product Information**

Application	WB, FC,E
Primary Accession	<a href="#">Q9H6Q4</a>
Reactivity	Human
Host	Rabbit
Clonality	Polyclonal
Isotype	Rabbit IgG
Calculated MW	53020
Antigen Region	240-269

**NARFL Antibody (Center) - Additional Information**

**Gene ID** 64428

**Other Names**

Cytosolic Fe-S cluster assembly factor NARFL, Iron-only hydrogenase-like protein 1, IOP1, Nuclear prelamina A recognition factor-like protein, Protein related to Narf, NARFL, PRN

**Target/Specificity**

This NARFL antibody is generated from rabbits immunized with a KLH conjugated synthetic peptide between 240-269 amino acids from the Central region of human NARFL.

**Dilution**

WB~~1:1000

FC~~1:10~50

**Format**

Purified polyclonal antibody supplied in PBS with 0.09% (W/V) sodium azide. This antibody is purified through a protein A column, followed by peptide affinity purification.

**Storage**

Maintain refrigerated at 2-8°C for up to 2 weeks. For long term storage store at -20°C in small aliquots to prevent freeze-thaw cycles.

**Precautions**

NARFL Antibody (Center) is for research use only and not for use in diagnostic or therapeutic procedures.

**NARFL Antibody (Center) - Protein Information**

**Name** CIAO3 ([HGNC:14179](#))

**Function** Component of the cytosolic iron-sulfur protein assembly (CIA) complex, a multiprotein

complex that mediates the incorporation of iron-sulfur cluster into extramitochondrial Fe/S proteins. Seems to negatively regulate the level of HIF1A expression, although this effect could be indirect.

#### **Tissue Location**

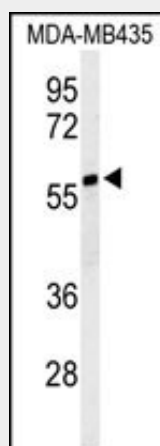
Widely expressed..

#### **NARFL Antibody (Center) - Protocols**

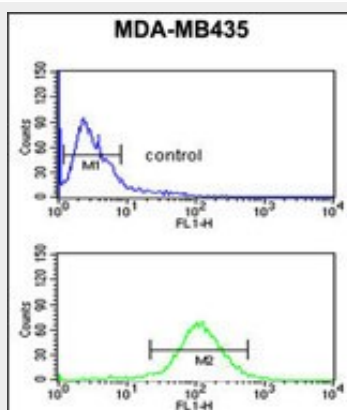
Provided below are standard protocols that you may find useful for product applications.

- [Western Blot](#)
- [Blocking Peptides](#)
- [Dot Blot](#)
- [Immunohistochemistry](#)
- [Immunofluorescence](#)
- [Immunoprecipitation](#)
- [Flow Cytometry](#)
- [Cell Culture](#)

#### **NARFL Antibody (Center) - Images**



Western blot analysis of NARFL Antibody (Center) (Cat. #AP9824c) in MDA-MB435 cell line lysates (35ug/lane). NARFL (arrow) was detected using the purified Pab.



NARFL Antibody (Center) (Cat. #AP9824c) flow cytometric analysis of MDA-MB435 cells (bottom histogram) compared to a negative control cell (top histogram). FITC-conjugated goat-anti-rabbit

secondary antibodies were used for the analysis.

**NARFL Antibody (Center) - References**

Song, D., et al. J. Biol. Chem. 284(51):35297-35307(2009)  
Huang, J., et al. Biochem. J. 401(1):341-352(2007)  
Rush, J., et al. Nat. Biotechnol. 23(1):94-101(2005)  
Daniels, R.J., et al. Hum. Mol. Genet. 10(4):339-352(2001)