

**C19orf18 Antibody (Center)**  
**Affinity Purified Rabbit Polyclonal Antibody (Pab)**  
**Catalog # AP9826c**

**Specification**

---

**C19orf18 Antibody (Center) - Product Information**

Application	WB, IHC-P, FC,E
Primary Accession	<a href="#">Q8NEA5</a>
Reactivity	Human
Host	Rabbit
Clonality	Polyclonal
Isotype	Rabbit IgG
Antigen Region	140-168

**C19orf18 Antibody (Center) - Additional Information**

**Gene ID** 147685

**Other Names**

Uncharacterized protein C19orf18, C19orf18

**Target/Specificity**

This C19orf18 antibody is generated from rabbits immunized with a KLH conjugated synthetic peptide between 140-168 amino acids from the Central region of human C19orf18.

**Dilution**

WB~~1:1000  
IHC-P~~1:50~100  
FC~~1:10~50

**Format**

Purified polyclonal antibody supplied in PBS with 0.09% (W/V) sodium azide. This antibody is purified through a protein A column, followed by peptide affinity purification.

**Storage**

Maintain refrigerated at 2-8°C for up to 2 weeks. For long term storage store at -20°C in small aliquots to prevent freeze-thaw cycles.

**Precautions**

C19orf18 Antibody (Center) is for research use only and not for use in diagnostic or therapeutic procedures.

**C19orf18 Antibody (Center) - Protein Information**

**Name** C19orf18

**Cellular Location**

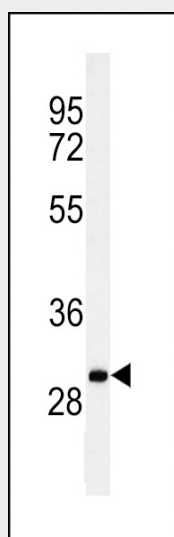
Membrane; Single-pass type I membrane protein

## C19orf18 Antibody (Center) - Protocols

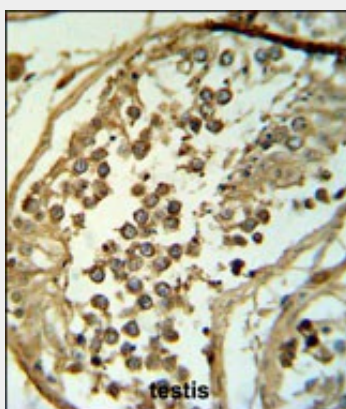
Provided below are standard protocols that you may find useful for product applications.

- [Western Blot](#)
- [Blocking Peptides](#)
- [Dot Blot](#)
- [Immunohistochemistry](#)
- [Immunofluorescence](#)
- [Immunoprecipitation](#)
- [Flow Cytometry](#)
- [Cell Culture](#)

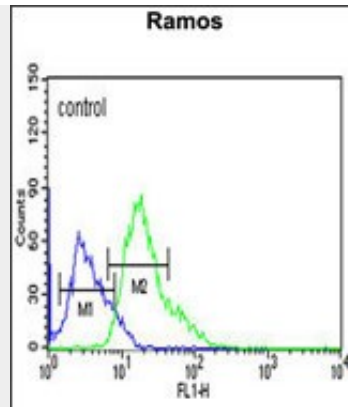
## C19orf18 Antibody (Center) - Images



Western blot analysis of C19orf18 Antibody (Center) (Cat. #AP9826c) in Ramos cell line lysates (35ug/lane). C19orf18 (arrow) was detected using the purified Pab.



C19orf18 Antibody (Center) (Cat. #AP9826c) IHC analysis in formalin fixed and paraffin embedded testis tissue followed by peroxidase conjugation of the secondary antibody and DAB staining. This data demonstrates the use of the C19orf18 Antibody (Center) for immunohistochemistry. Clinical relevance has not been evaluated.



C19orf18 Antibody (Center) (Cat. #AP9826c) flow cytometric analysis of Ramos cells (right histogram) compared to a negative control cell (left histogram). FITC-conjugated goat-anti-rabbit secondary antibodies were used for the analysis.

#### **C19orf18 Antibody (Center) - References**

Gerhard, D.S., et al. Genome Res. 14 (10B), 2121-2127 (2004)