

RT25 Antibody (C-term)
Affinity Purified Rabbit Polyclonal Antibody (Pab)
Catalog # AP9851b**Specification**

RT25 Antibody (C-term) - Product Information

Application	WB, IHC-P, FC,E
Primary Accession	P82663
Reactivity	Human
Host	Rabbit
Clonality	Polyclonal
Isotype	Rabbit IgG
Calculated MW	20116
Antigen Region	145-173

RT25 Antibody (C-term) - Additional Information**Gene ID** 64432**Other Names**

28S ribosomal protein S25, mitochondrial, MRP-S25, S25mt, MRPS25, RPMS25

Target/Specificity

This RT25 antibody is generated from rabbits immunized with a KLH conjugated synthetic peptide between 145-173 amino acids from the C-terminal region of human RT25.

Dilution

WB~~1:1000
IHC-P~~1:50~100
FC~~1:10~50

Format

Purified polyclonal antibody supplied in PBS with 0.09% (W/V) sodium azide. This antibody is purified through a protein A column, followed by peptide affinity purification.

Storage

Maintain refrigerated at 2-8°C for up to 2 weeks. For long term storage store at -20°C in small aliquots to prevent freeze-thaw cycles.

Precautions

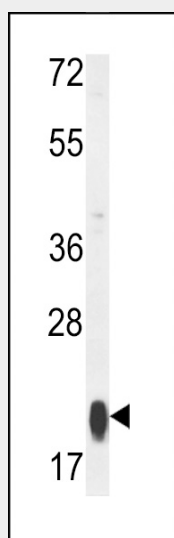
RT25 Antibody (C-term) is for research use only and not for use in diagnostic or therapeutic procedures.

RT25 Antibody (C-term) - Protein Information**Name** MRPS25**Synonyms** RPMS25

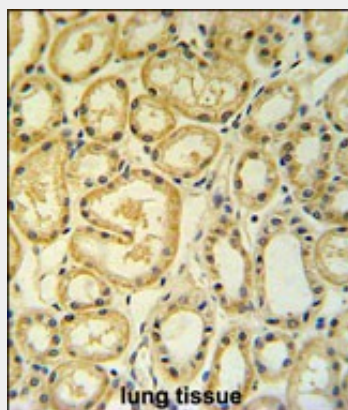
Cellular Location
Mitochondrion.**RT25 Antibody (C-term) - Protocols**

Provided below are standard protocols that you may find useful for product applications.

- [Western Blot](#)
- [Blocking Peptides](#)
- [Dot Blot](#)
- [Immunohistochemistry](#)
- [Immunofluorescence](#)
- [Immunoprecipitation](#)
- [Flow Cytometry](#)
- [Cell Culture](#)

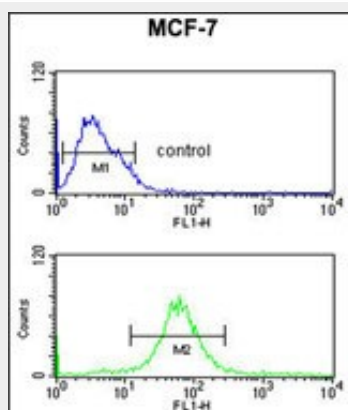
RT25 Antibody (C-term) - Images

Western blot analysis of RT25 Antibody (C-term) (Cat. #AP9851b) in MCF-7 cell line lysates (35ug/lane). RT25 (arrow) was detected using the purified Pab.



RT25 Antibody (C-term) (Cat. #AP9851b) IHC analysis in formalin fixed and paraffin embedded human lung tissue followed by peroxidase conjugation of the secondary antibody and DAB staining. This data demonstrates the use of the RT25 Antibody (C-term) for

immunohistochemistry. Clinical relevance has not been evaluated.



RT25 Antibody (C-term) (Cat. #AP9851b) flow cytometric analysis of MCF-7 cells (bottom histogram) compared to a negative control cell (top histogram). FITC-conjugated goat-anti-rabbit secondary antibodies were used for the analysis.

RT25 Antibody (C-term) - Background

Mammalian mitochondrial ribosomal proteins are encoded by nuclear genes and help in protein synthesis within the mitochondrion. Mitochondrial ribosomes (mitoribosomes) consist of a small 28S subunit and a large 39S subunit. They have an estimated 75% protein to rRNA composition compared to prokaryotic ribosomes, where this ratio is reversed. Another difference between mammalian mitoribosomes and prokaryotic ribosomes is that the latter contain a 5S rRNA. Among different species, the proteins comprising the mitoribosome differ greatly in sequence, and sometimes in biochemical properties, which prevents easy recognition by sequence homology. This gene encodes a 28S subunit protein. A pseudogene corresponding to this gene is found on chromosome 4.

RT25 Antibody (C-term) - References

Ewing, R.M., et al. Mol. Syst. Biol. 3, 89 (2007) :
Zhang, Z., et al. Genomics 81(5):468-480(2003)
Kenmochi, N., et al. Genomics 77 (1-2), 65-70 (2001) :
Cavdar Koc, E., et al. J. Biol. Chem. 276(22):19363-19374(2001)
Hattori, A., et al. DNA Res. 7(6):357-366(2000)