

**CDH20 Antibody (N-term)**  
**Affinity Purified Rabbit Polyclonal Antibody (Pab)**  
**Catalog # AP9870a****Specification**

---

**CDH20 Antibody (N-term) - Product Information**

Application	WB, IHC-P, FC,E
Primary Accession	<a href="#">Q9HBT6</a>
Other Accession	<a href="#">Q5DWV1</a> , <a href="#">Q9Z0M3</a>
Reactivity	Human
Predicted	Mouse, Rat
Host	Rabbit
Clonality	Polyclonal
Isotype	Rabbit IgG
Calculated MW	88993
Antigen Region	111-140

**CDH20 Antibody (N-term) - Additional Information****Gene ID** 28316**Other Names**

Cadherin-20, CDH20, CDH7L3

**Target/Specificity**

This CDH20 antibody is generated from rabbits immunized with a KLH conjugated synthetic peptide between 111-140 amino acids from the N-terminal region of human CDH20.

**Dilution**

WB~~1:1000  
IHC-P~~1:50~100  
FC~~1:10~50

**Format**

Purified polyclonal antibody supplied in PBS with 0.09% (W/V) sodium azide. This antibody is purified through a protein A column, followed by peptide affinity purification.

**Storage**

Maintain refrigerated at 2-8°C for up to 2 weeks. For long term storage store at -20°C in small aliquots to prevent freeze-thaw cycles.

**Precautions**

CDH20 Antibody (N-term) is for research use only and not for use in diagnostic or therapeutic procedures.

**CDH20 Antibody (N-term) - Protein Information****Name** CDH20

**Synonyms** CDH7L3

**Function** Cadherins are calcium-dependent cell adhesion proteins. They preferentially interact with themselves in a homophilic manner in connecting cells; cadherins may thus contribute to the sorting of heterogeneous cell types.

**Cellular Location**

Cell membrane; Single-pass type I membrane protein

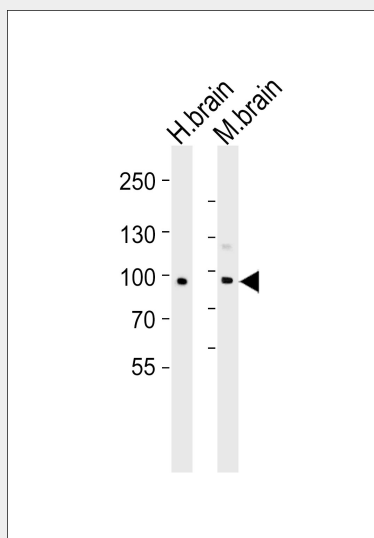
**Tissue Location**

Expressed in placenta, adult brain, and fetal brain

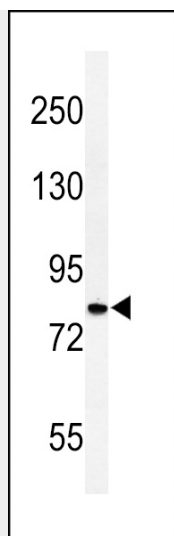
**CDH20 Antibody (N-term) - Protocols**

Provided below are standard protocols that you may find useful for product applications.

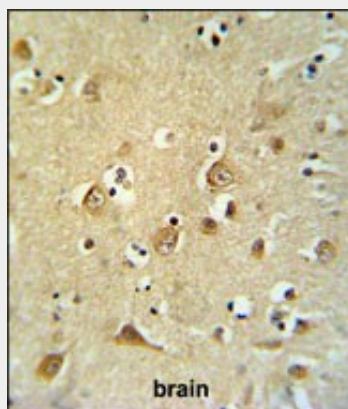
- [Western Blot](#)
- [Blocking Peptides](#)
- [Dot Blot](#)
- [Immunohistochemistry](#)
- [Immunofluorescence](#)
- [Immunoprecipitation](#)
- [Flow Cytometry](#)
- [Cell Culture](#)

**CDH20 Antibody (N-term) - Images**

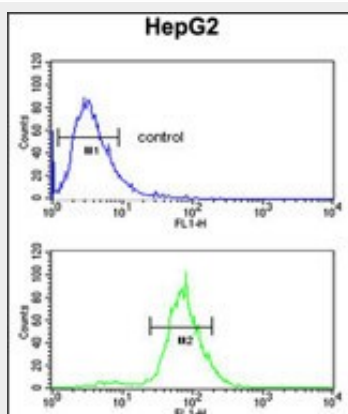
Western blot analysis of lysates from human brain and mouse brain tissue lysate (from left to right), using CDH20 Antibody (N-term) (Cat. #AP9870a). AP9870a was diluted at 1:1000 at each lane. A goat anti-rabbit IgG H&L (HRP) at 1:5000 dilution was used as the secondary antibody. Lysates at 35 µg per lane.



Western blot analysis of CDH20 Antibody (N-term) (Cat. #AP9870a) in HepG2 cell line lysates (35ug/lane). CDH20 (arrow) was detected using the purified Pab.



CDH20 Antibody (N-term) (Cat. #AP9870a) IHC analysis in formalin fixed and paraffin embedded brain tissue followed by peroxidase conjugation of the secondary antibody and DAB staining. This data demonstrates the use of the CDH20 Antibody (N-term) for immunohistochemistry. Clinical relevance has not been evaluated.



CDH20 Antibody (N-term) (Cat. #AP9870a) flow cytometric analysis of HepG2 cells (bottom histogram) compared to a negative control cell (top histogram). FITC-conjugated goat-anti-rabbit secondary antibodies were used for the analysis.

#### CDH20 Antibody (N-term) - Background

This gene is a type II classical cadherin from the cadherin superfamily and one of three cadherin 7-like genes located in a cluster on chromosome 18. The encoded membrane protein is a calcium dependent cell-cell adhesion glycoprotein comprised of five extracellular cadherin repeats, a transmembrane region and a highly conserved cytoplasmic tail. Type II (atypical) cadherins are defined based on their lack of a HAV cell adhesion recognition sequence specific to type I cadherins. Since disturbance of intracellular adhesion is a prerequisite for invasion and metastasis of tumor cells, cadherins are considered prime candidates for tumor suppressor genes.

#### **CDH20 Antibody (N-term) - References**

Kools, P., et al. Genomics 68(3):283-295(2000)