

**ADCY4 Antibody (Center)**  
**Affinity Purified Rabbit Polyclonal Antibody (Pab)**  
**Catalog # AP9875c****Specification**

---

**ADCY4 Antibody (Center) - Product Information**

Application	WB, FC,E
Primary Accession	<a href="#">Q8NFM4</a>
Other Accession	<a href="#">P26770</a> , <a href="#">Q91WF3</a>
Reactivity	Human
Predicted	Mouse, Rat
Host	Rabbit
Clonality	Polyclonal
Isotype	Rabbit IgG
Calculated MW	119794
Antigen Region	415-441

**ADCY4 Antibody (Center) - Additional Information****Gene ID** 196883**Other Names**

Adenylate cyclase type 4, ATP pyrophosphate-lyase 4, Adenylate cyclase type IV, Adenylyl cyclase 4, ADCY4

**Target/Specificity**

This ADCY4 antibody is generated from rabbits immunized with a KLH conjugated synthetic peptide between 415-441 amino acids from the Central region of human ADCY4.

**Dilution**WB~~1:1000  
FC~~1:10~50**Format**

Purified polyclonal antibody supplied in PBS with 0.09% (W/V) sodium azide. This antibody is purified through a protein A column, followed by peptide affinity purification.

**Storage**

Maintain refrigerated at 2-8°C for up to 2 weeks. For long term storage store at -20°C in small aliquots to prevent freeze-thaw cycles.

**Precautions**

ADCY4 Antibody (Center) is for research use only and not for use in diagnostic or therapeutic procedures.

**ADCY4 Antibody (Center) - Protein Information****Name** ADCY4

**Function** Catalyzes the formation of the signaling molecule cAMP in response to G-protein signaling.

**Cellular Location**

Cell membrane; Multi-pass membrane protein. Cytoplasm

**Tissue Location**

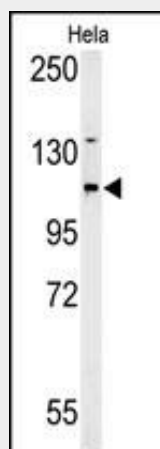
Detected in the zona glomerulosa and the zona fasciculata in the adrenal gland (at protein level)

**ADCY4 Antibody (Center) - Protocols**

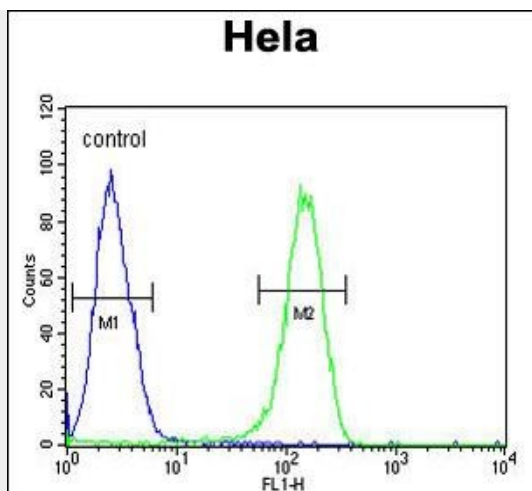
Provided below are standard protocols that you may find useful for product applications.

- [Western Blot](#)
- [Blocking Peptides](#)
- [Dot Blot](#)
- [Immunohistochemistry](#)
- [Immunofluorescence](#)
- [Immunoprecipitation](#)
- [Flow Cytometry](#)
- [Cell Culture](#)

**ADCY4 Antibody (Center) - Images**



Western blot analysis of ADCY4 Antibody (Center) (Cat. #AP9875c) in HeLa cell line lysates (35ug/lane). ADCY4 (arrow) was detected using the purified Pab.



ADCY4 Antibody (Center) (Cat. #AP9875c) flow cytometric analysis of Hela cells (right histogram) compared to a negative control cell (left histogram). FITC-conjugated goat-anti-rabbit secondary antibodies were used for the analysis.

#### **ADCY4 Antibody (Center) - Background**

This gene encodes a member of the family of adenylate cyclases, which are membrane-associated enzymes that catalyze the formation of the secondary messenger cyclic adenosine monophosphate (cAMP). Mouse studies show that adenylate cyclase 4, along with adenylate cyclases 2 and 3, is expressed in olfactory cilia, suggesting that several different adenylate cyclases may couple to olfactory receptors and that there may be multiple receptor-mediated mechanisms for the generation of cAMP signals.

#### **ADCY4 Antibody (Center) - References**

- Rhim, J.H., et al. Aging Cell 5(6):451-461(2006)
- Jiang, G., et al. Am. J. Physiol. Endocrinol. Metab. 284 (4), E671-E678 (2003)
- Sunahara, R.K., et al. Mol. Interv. 2(3):168-184(2002)
- Ludwig, M.G., et al. J. Recept. Signal Transduct. Res. 22 (1-4), 79-110 (2002)
- Cote, M., et al. J. Clin. Endocrinol. Metab. 86(9):4495-4503(2001)