

IMP3 Antibody (C-term)
Affinity Purified Rabbit Polyclonal Antibody (Pab)
Catalog # AP9901b

Specification

IMP3 Antibody (C-term) - Product Information

Application	WB, IHC-P, FC,E
Primary Accession	Q9NV31
Reactivity	Human, Mouse
Host	Rabbit
Clonality	Polyclonal
Isotype	Rabbit IgG
Calculated MW	21850
Antigen Region	156-184

IMP3 Antibody (C-term) - Additional Information

Gene ID 55272

Other Names

U3 small nucleolar ribonucleoprotein protein IMP3, U3 snoRNP protein IMP3, BRMS2, IMP3, C15orf12, MRPS4

Target/Specificity

This IMP3 antibody is generated from rabbits immunized with a KLH conjugated synthetic peptide between 156-184 amino acids from the C-terminal region of human IMP3.

Dilution

WB~~1:1000
IHC-P~~1:50~100
FC~~1:10~50

Format

Purified polyclonal antibody supplied in PBS with 0.09% (W/V) sodium azide. This antibody is purified through a protein A column, followed by peptide affinity purification.

Storage

Maintain refrigerated at 2-8°C for up to 2 weeks. For long term storage store at -20°C in small aliquots to prevent freeze-thaw cycles.

Precautions

IMP3 Antibody (C-term) is for research use only and not for use in diagnostic or therapeutic procedures.

IMP3 Antibody (C-term) - Protein Information

Name IMP3 ([HGNC:14497](#))

Synonyms C15orf12, MRPS4

Function Component of the 60-80S U3 small nucleolar ribonucleoprotein (U3 snoRNP). Required for the early cleavages during pre-18S ribosomal RNA processing (PubMed:[12655004](#)). Part of the small subunit (SSU) processome, first precursor of the small eukaryotic ribosomal subunit. During the assembly of the SSU processome in the nucleolus, many ribosome biogenesis factors, an RNA chaperone and ribosomal proteins associate with the nascent pre-rRNA and work in concert to generate RNA folding, modifications, rearrangements and cleavage as well as targeted degradation of pre-ribosomal RNA by the RNA exosome (PubMed:[34516797](#)).

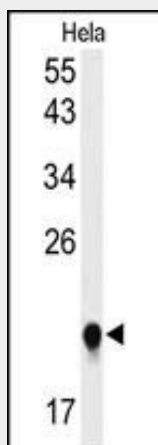
Cellular Location

Nucleus, nucleolus

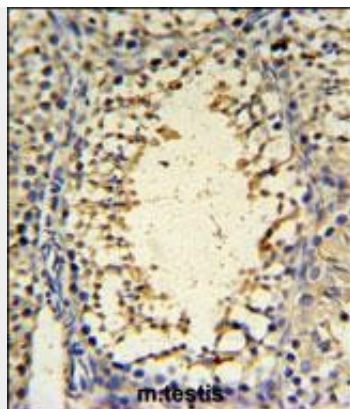
IMP3 Antibody (C-term) - Protocols

Provided below are standard protocols that you may find useful for product applications.

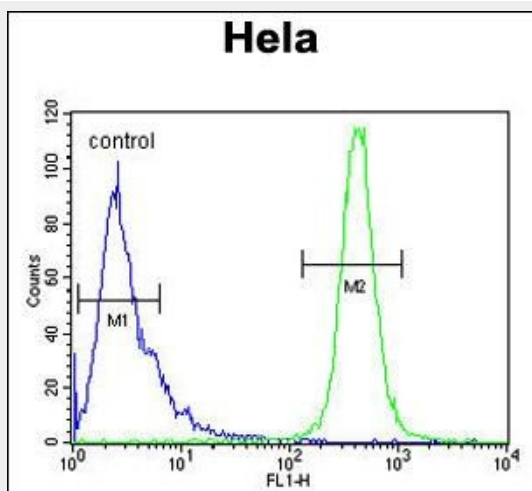
- [Western Blot](#)
- [Blocking Peptides](#)
- [Dot Blot](#)
- [Immunohistochemistry](#)
- [Immunofluorescence](#)
- [Immunoprecipitation](#)
- [Flow Cytometry](#)
- [Cell Culture](#)

IMP3 Antibody (C-term) - Images

Western blot analysis of IMP3 Antibody (C-term) (Cat. #AP9901b) in HeLa cell line lysates (35ug/lane). IMP3 (arrow) was detected using the purified Pab.



IMP3 Antibody (C-term) (Cat. #AP9901b) IHC analysis in formalin fixed and paraffin embedded mouse testis tissue followed by peroxidase conjugation of the secondary antibody and DAB staining. This data demonstrates the use of the IMP3 Antibody (C-term) for immunohistochemistry. Clinical relevance has not been evaluated.



IMP3 Antibody (C-term) (Cat. #AP9901b) flow cytometric analysis of HeLa cells (right histogram) compared to a negative control cell (left histogram). FITC-conjugated goat-anti-rabbit secondary antibodies were used for the analysis.

IMP3 Antibody (C-term) - Background

This gene encodes the human homolog of the yeast Imp3 protein. The protein localizes to the nucleoli and interacts with the U3 snoRNP complex. The protein contains an S4 domain.

IMP3 Antibody (C-term) - References

Li, D., et al. Ann. Surg. Oncol. 16(12):3499-3506(2009) Walter, O., et al. Hum. Pathol. 40(11):1528-1533(2009) Riener, M.O., et al. Hum. Pathol. 40(10):1377-1383(2009) Noske, A., et al. Int. J. Gynecol. Pathol. 28(3):203-210(2009)