

**INT10 Antibody (C-term)**  
**Affinity Purified Rabbit Polyclonal Antibody (Pab)**  
**Catalog # AP9925b****Specification**

---

**INT10 Antibody (C-term) - Product Information**

Application	WB, FC,E
Primary Accession	<a href="#">Q9NVR2</a>
Other Accession	<a href="#">Q4R7B1</a>
Reactivity	Human
Predicted	Monkey
Host	Rabbit
Clonality	Polyclonal
Isotype	Rabbit IgG
Calculated MW	82236
Antigen Region	516-545

**INT10 Antibody (C-term) - Additional Information****Gene ID** 55174**Other Names**

Integrator complex subunit 10, Int10, INTS10, C8orf35

**Target/Specificity**

This INT10 antibody is generated from rabbits immunized with a KLH conjugated synthetic peptide between 516-545 amino acids from the C-terminal region of human INT10.

**Dilution**

WB~~1:1000

FC~~1:10~50

**Format**

Purified polyclonal antibody supplied in PBS with 0.09% (W/V) sodium azide. This antibody is purified through a protein A column, followed by peptide affinity purification.

**Storage**

Maintain refrigerated at 2-8°C for up to 2 weeks. For long term storage store at -20°C in small aliquots to prevent freeze-thaw cycles.

**Precautions**

INT10 Antibody (C-term) is for research use only and not for use in diagnostic or therapeutic procedures.

**INT10 Antibody (C-term) - Protein Information****Name** INTS10

**Synonyms** C8orf35

**Function** Component of the Integrator (INT) complex, a complex involved in the small nuclear RNAs (snRNA) U1 and U2 transcription and in their 3'-box-dependent processing. The Integrator complex is associated with the C-terminal domain (CTD) of RNA polymerase II largest subunit (POLR2A) and is recruited to the U1 and U2 snRNAs genes (Probable). May be not involved in the recruitment of cytoplasmic dynein to the nuclear envelope by different components of the INT complex (PubMed:[23904267](#)).

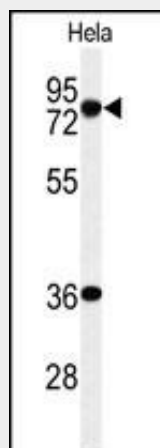
**Cellular Location**

Nucleus

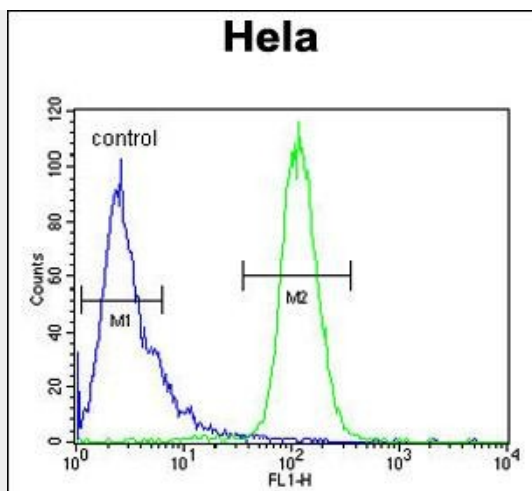
**INT10 Antibody (C-term) - Protocols**

Provided below are standard protocols that you may find useful for product applications.

- [Western Blot](#)
- [Blocking Peptides](#)
- [Dot Blot](#)
- [Immunohistochemistry](#)
- [Immunofluorescence](#)
- [Immunoprecipitation](#)
- [Flow Cytometry](#)
- [Cell Culture](#)

**INT10 Antibody (C-term) - Images**

Western blot analysis of INT10 Antibody (C-term) (Cat. #AP9925b) in HeLa cell line lysates (35ug/lane). INT10 (arrow) was detected using the purified Pab.



INT10 Antibody (C-term) (Cat. #AP9925b) flow cytometric analysis of HeLa cells (right histogram) compared to a negative control cell (left histogram). FITC-conjugated goat-anti-rabbit secondary antibodies were used for the analysis.

#### **INT10 Antibody (C-term) - Background**

INTS10 is a subunit of the Integrator complex, which associates with the C-terminal domain of RNA polymerase II large subunit (POLR2A; MIM 180660) and mediates 3-prime end processing of small nuclear RNAs U1.

#### **INT10 Antibody (C-term) - References**

Lasky-Su, J., et al. Am. J. Med. Genet. B Neuropsychiatr. Genet. 147B (8), 1345-1354 (2008)  
Kooner, J.S., et al. Nat. Genet. 40(2):149-151(2008)  
Baillat, D., et al. Cell 123(2):265-276(2005)  
Yuryev, A., et al. Genomics 81(2):112-125(2003)