

**SP5 Antibody (C-term)**  
**Purified Rabbit Polyclonal Antibody (Pab)**  
**Catalog # AP9937b****Specification**

---

**SP5 Antibody (C-term) - Product Information**

Application	WB, FC,E
Primary Accession	<a href="#">Q6BEB4</a>
Reactivity	Human, Mouse
Host	Rabbit
Clonality	Polyclonal
Isotype	Rabbit IgG
Antigen Region	369-398

**SP5 Antibody (C-term) - Additional Information****Gene ID** 389058**Other Names**

Transcription factor Sp5, SP5

**Target/Specificity**

This SP5 antibody is generated from rabbits immunized with a KLH conjugated synthetic peptide between 369-398 amino acids from the C-terminal region of human SP5.

**Dilution**

WB~~1:1000

FC~~1:10~50

**Format**

Purified polyclonal antibody supplied in PBS with 0.09% (W/V) sodium azide. This antibody is prepared by Saturated Ammonium Sulfate (SAS) precipitation followed by dialysis against PBS.

**Storage**

Maintain refrigerated at 2-8°C for up to 2 weeks. For long term storage store at -20°C in small aliquots to prevent freeze-thaw cycles.

**Precautions**

SP5 Antibody (C-term) is for research use only and not for use in diagnostic or therapeutic procedures.

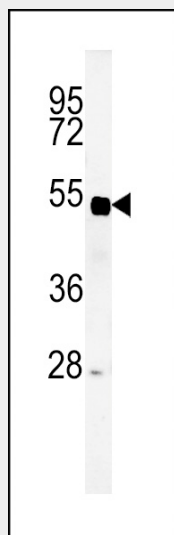
**SP5 Antibody (C-term) - Protein Information****Name** SP5

**Function** Binds to GC boxes promoters elements. Probable transcriptional activator that has a role in the coordination of changes in transcription required to generate pattern in the developing embryo (By similarity).

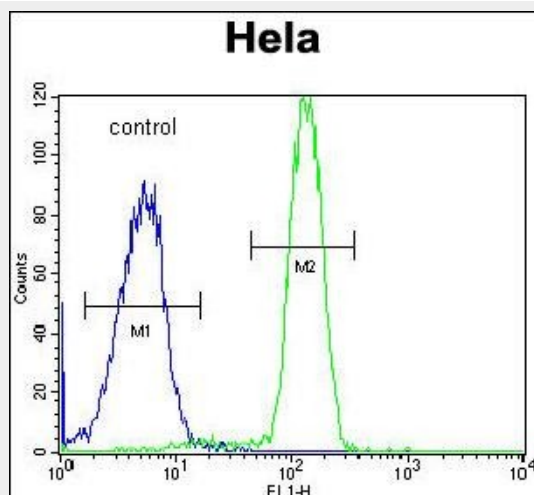
**Cellular Location**  
Nucleus.**SP5 Antibody (C-term) - Protocols**

Provided below are standard protocols that you may find useful for product applications.

- [Western Blot](#)
- [Blocking Peptides](#)
- [Dot Blot](#)
- [Immunohistochemistry](#)
- [Immunofluorescence](#)
- [Immunoprecipitation](#)
- [Flow Cytometry](#)
- [Cell Culture](#)

**SP5 Antibody (C-term) - Images**

Western blot analysis of SP5 Antibody (C-term) (Cat. #AP9937b) in mouse liver tissue lysates (35ug/lane). SP5 (arrow) was detected using the purified Pab.



SP5 Antibody (C-term) (Cat. #AP9937b) flow cytometric analysis of Hela cells (right histogram) compared to a negative control cell (left histogram). FITC-conjugated goat-anti-rabbit secondary antibodies were used for the analysis.

#### **SP5 Antibody (C-term) - Background**

SP5 binds to GC boxes promoters elements. SP5 probable transcriptional activator that has a role in the coordination of changes in transcription required to generate pattern in the developing embryo.

#### **SP5 Antibody (C-term) - References**

Chen, Y., et al. Biochem. Biophys. Res. Commun. 340(3):758-766(2006)  
Suske, G., et al. Genomics 85(5):551-556(2005)