

**YPEL5 Antibody (C-term)**  
**Affinity Purified Rabbit Polyclonal Antibody (Pab)**  
**Catalog # AP9958b****Specification**

---

**YPEL5 Antibody (C-term) - Product Information**

Application	WB, IHC-P,E
Primary Accession	<a href="#">P62699</a>
Other Accession	<a href="#">P62700</a> , <a href="#">Q4R4Q6</a> , <a href="#">Q3ZBE7</a>
Reactivity	Human, Mouse
Predicted	Bovine, Monkey
Host	Rabbit
Clonality	Polyclonal
Isotype	Rabbit IgG
Calculated MW	13842
Antigen Region	92-121

**YPEL5 Antibody (C-term) - Additional Information****Gene ID** 51646**Other Names**

Protein yippee-like 5, YPEL5

**Target/Specificity**

This YPEL5 antibody is generated from rabbits immunized with a KLH conjugated synthetic peptide between 92-121 amino acids from the C-terminal region of human YPEL5.

**Dilution**

WB~~1:1000

IHC-P~~1:50~100

**Format**

Purified polyclonal antibody supplied in PBS with 0.09% (W/V) sodium azide. This antibody is purified through a protein A column, followed by peptide affinity purification.

**Storage**

Maintain refrigerated at 2-8°C for up to 2 weeks. For long term storage store at -20°C in small aliquots to prevent freeze-thaw cycles.

**Precautions**

YPEL5 Antibody (C-term) is for research use only and not for use in diagnostic or therapeutic procedures.

**YPEL5 Antibody (C-term) - Protein Information****Name** YPEL5

**Function** Component of the CTLH E3 ubiquitin-protein ligase complex that selectively accepts ubiquitin from UBE2H and mediates ubiquitination and subsequent proteasomal degradation of the transcription factor HBP1 (PubMed:[29911972](#)). Required for normal cell proliferation (By similarity).

#### Cellular Location

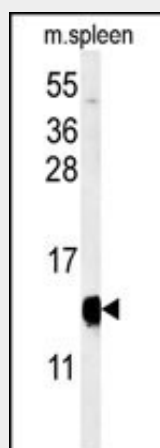
Nucleus {ECO:0000250|UniProtKB:Q65Z55}. Cytoplasm, cytoskeleton, microtubule organizing center, centrosome {ECO:0000250|UniProtKB:Q65Z55}. Cytoplasm, cytoskeleton, spindle pole {ECO:0000250|UniProtKB:Q65Z55}. Midbody {ECO:0000250|UniProtKB:Q65Z55} Note=Detected in nucleus and at the centrosome during interphase. During mitosis, detected on the mitotic spindle, at spindle poles and at the midbody. {ECO:0000250|UniProtKB:Q65Z55}

#### YPEL5 Antibody (C-term) - Protocols

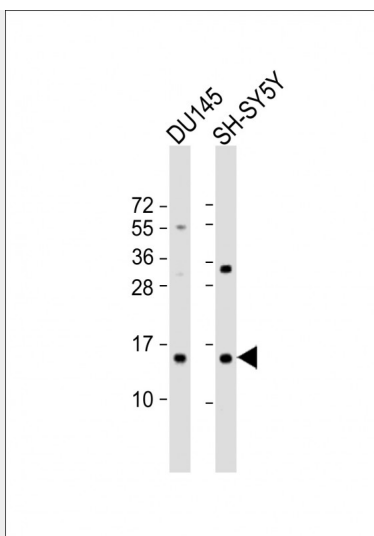
Provided below are standard protocols that you may find useful for product applications.

- [Western Blot](#)
- [Blocking Peptides](#)
- [Dot Blot](#)
- [Immunohistochemistry](#)
- [Immunofluorescence](#)
- [Immunoprecipitation](#)
- [Flow Cytometry](#)
- [Cell Culture](#)

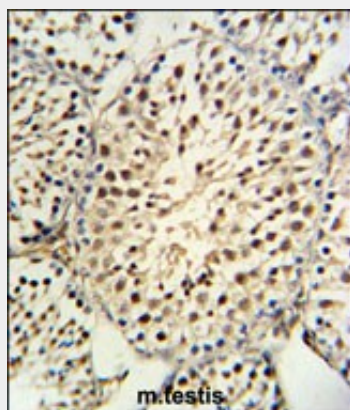
#### YPEL5 Antibody (C-term) - Images



Western blot analysis of YPEL5 Antibody (C-term) (Cat. #AP9958b) in mouse spleen tissue lysates (35ug/lane). YPEL5 (arrow) was detected using the purified Pab.



All lanes : Anti-YPEL5 Antibody (C-term) at 1:1000 dilution Lane 1: DU145 whole cell lysate Lane 2: SH-SY5Y whole cell lysate Lysates/proteins at 20 µg per lane. Secondary Goat Anti-Rabbit IgG, (H+L), Peroxidase conjugated at 1/10000 dilution. Predicted band size : 14 kDa Blocking/Dilution buffer: 5% NFDM/TBST.



YPEL5 Antibody (C-term) (Cat. #AP9958b) IHC analysis in formalin fixed and paraffin embedded mouse testis tissue followed by peroxidase conjugation of the secondary antibody and DAB staining. This data demonstrates the use of the YPEL5 Antibody (C-term) for immunohistochemistry. Clinical relevance has not been evaluated.

#### **YPEL5 Antibody (C-term) - References**

- Hillier, L.W., et al. Nature 434(7034):724-731(2005)
- Hosono, K., et al. Gene 340(1):31-43(2004)
- Roxstrom-Lindquist, K., et al. Insect Mol. Biol. 10(1):77-86(2001)