

GFR alpha 3 Antibody
Catalog # ASC10020**Specification**

GFR alpha 3 Antibody - Product Information

Application	IF, IHC
Primary Accession	O35118
Other Accession	NP_034410 , 14587
Reactivity	Human, Mouse, Rat
Host	Rabbit
Clonality	Polyclonal
Isotype	IgG
Calculated MW	Predicted: 44 kDa

Application Notes	Observed: 43 kDa KDa GFR alpha 3 antibody can be used for detection of GFR alpha 3 expression by Western blot at 0.5 µg/mL. Antibody can also be used for immunohistochemistry starting at 5 µg/mL. For immunofluorescence start at 5 µg/mL.
-------------------	--

GFR alpha 3 Antibody - Additional InformationGene ID **14587****Other Names**

GFR alpha 3 Antibody: Y15110, GFRalpha3, GDNF family receptor alpha-3, GDNF receptor alpha-3, glial cell line derived neurotrophic factor family receptor alpha 3

Target/Specificity

GFR alpha 3 antibody was raised against a 14 amino acid peptide near the center of murine GFR alpha 3. The immunogen is located within the last 50 amino acids of GFR alpha 3.

Reconstitution & Storage

GFR alpha 3 antibody can be stored at 4°C for three months and -20°C, stable for up to one year. As with all antibodies care should be taken to avoid repeated freeze thaw cycles. Antibodies should not be exposed to prolonged high temperatures.

Precautions

GFR alpha 3 Antibody is for research use only and not for use in diagnostic or therapeutic procedures.

GFR alpha 3 Antibody - Protein Information**Name** Gfra3**Function**

Receptor for the glial cell line-derived neurotrophic factor, artemin. Mediates the artemin-induced

autophosphorylation and activation of the RET receptor tyrosine kinase (By similarity).

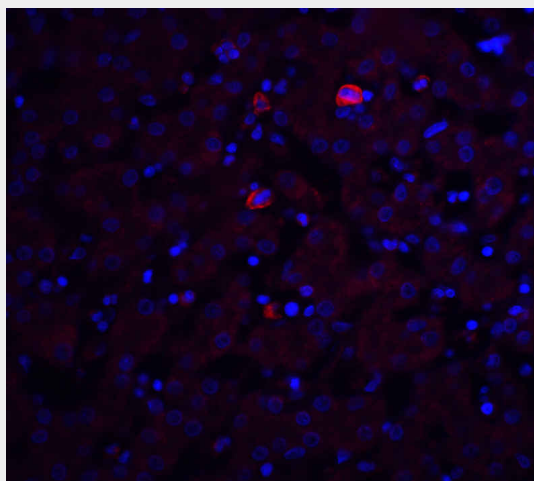
Cellular Location

Cell membrane; Lipid-anchor, GPI- anchor

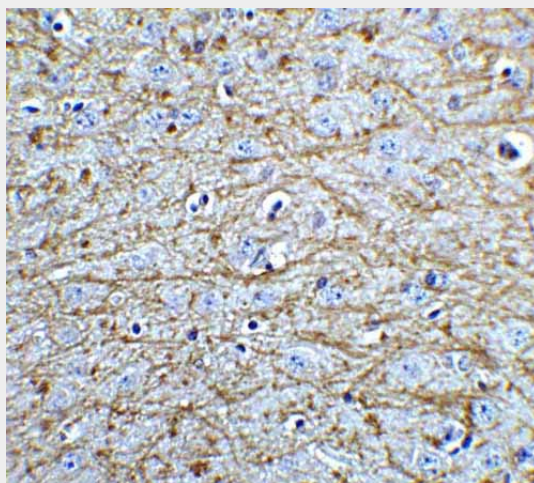
GFR alpha 3 Antibody - Protocols

Provided below are standard protocols that you may find useful for product applications.

- [Western Blot](#)
- [Blocking Peptides](#)
- [Dot Blot](#)
- [Immunohistochemistry](#)
- [Immunofluorescence](#)
- [Immunoprecipitation](#)
- [Flow Cytometry](#)
- [Cell Culture](#)

GFR alpha 3 Antibody - Images

Immunofluorescence of Trophinin in mouse liver tissue with Trophinin antibody at 20 µg/ml.



Immunohistochemistry of SOX2 in mouse brain tissue with SOX2 Antibody at 5 µg/mL.

GFR alpha 3 Antibody - Background

GFR alpha 3 Antibody: Members of the glial cell line-derived neurotrophic factor (GDNF) family, including GDNF and neurturin (NTN) play essential roles in the control of vertebrate neuron survival and differentiation. A new member of the GDNF family was recently identified and designated persephin. Physiological responses to these neurotrophic factors require two receptor subunits, the novel glycosylphosphatidylinositol linked protein GFR α and Ret receptor tyrosine kinase GFRbeta. Following the findings of GFR α -1 and -2, a novel receptor in GFR α family was identified from human and mouse and designated GFR α -3. GFR α -3 binds persephin, thus, persephin, GFR α -3, and Ret PTK form a complex to transduce persephin signal and to mediate persephin function.

GFR alpha 3 Antibody - References

Milbrandt J, de Sauvage FJ, Fahrner TJ, et al. Persephin, a novel neurotrophic factor related to GDNF and neurturin. *Neuron* 1998; 20:245-253.
Nomenclature Committee. Nomenclature of GPI-linked receptors for the GDNF ligand family. GFR α . *Neuron* 1997; 19:485.
Jing S, Yu Y, Fang M, et al. GFR α -2 and GFR α -3 are two new receptors for ligands of the GDNF family. *J. Biol. Chem.* 1997; 272:33111-7.
Baloh RH, Gorodinsky A, Golden JP, et al. GFR α 3 is an orphan member of the GDNF/neurturin/persephin receptor family. *Proc. Natl. Acad. Sci. USA* 1998; 95:5801-6.