

Caspase-13 Antibody
Catalog # ASC10096**Specification**

Caspase-13 Antibody - Product Information

Application	WB, IHC
Primary Accession	O75601
Other Accession	O75601 , 10720034
Reactivity	Human, Mouse, Rat
Host	Rabbit
Clonality	Polyclonal
Isotype	IgG
Calculated MW	43 kDa KDa
Application Notes	Caspase-13 antibody can be used for detection of caspase-13 by Western blot at 1 µg/mL. A 43 kDa band should be detected. Antibody can also be used for immunohistochemistry starting at 10 µg/mL.

Caspase-13 Antibody - Additional InformationGene ID **338039****Other Names**

Caspase-13 Antibody: CASP13, Caspase-13, Evolutionary related interleukin-1-beta-converting enzyme, CASP-13, caspase 4, apoptosis-related cysteine peptidase

Target/Specificity

CASP4;

Reconstitution & Storage

Caspase-13 antibody can be stored at 4°C for three months and -20°C, stable for up to one year. As with all antibodies care should be taken to avoid repeated freeze thaw cycles. Antibodies should not be exposed to prolonged high temperatures.

Precautions

Caspase-13 Antibody is for research use only and not for use in diagnostic or therapeutic procedures.

Caspase-13 Antibody - Protein Information**Name** CASP13**Function**

Involved in the activation cascade of caspases responsible for apoptosis execution. Might function by either activating some proteins required for cell death or inactivating proteins necessary for cell survival.

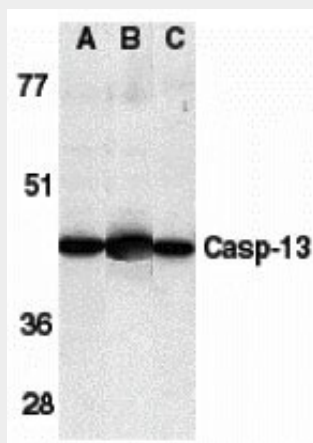
Tissue Location

Mainly expressed in peripheral blood lymphocytes, spleen and placenta

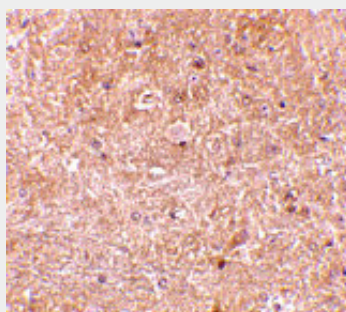
Caspase-13 Antibody - Protocols

Provided below are standard protocols that you may find useful for product applications.

- [Western Blot](#)
- [Blocking Peptides](#)
- [Dot Blot](#)
- [Immunohistochemistry](#)
- [Immunofluorescence](#)
- [Immunoprecipitation](#)
- [Flow Cytometry](#)
- [Cell Culture](#)

Caspase-13 Antibody - Images

Western blot analysis of caspase-13 in human HL60 cell lysate (A), mouse brain (B) and rat brain (C) tissue lysates with caspase-13 antibody at 1 µg/mL.



Immunohistochemistry of caspase-13 in mouse brain tissue with caspase-13 antibody at 10 µg/mL.

Caspase-13 Antibody - Background

Caspase-13 Antibody: Apoptosis is related to many diseases and induced by a family of cell death receptors and their ligands. Cell death is finally caused by members of the caspase family of proteases and caspase activated DNases. A novel member in the caspase family was recently identified and designated ERICE (for Evolutionarily Related Interleukin-1 beta Converting Enzyme)

and caspase-13. Caspase-13 belongs to the ICE subfamily of caspases. Overexpression of caspase-13 induces apoptosis. Caspase-13 was activated by caspase-8, which is a key enzyme in death receptor induced apoptosis. Caspase-13 is expressed in a variety of human tissues and cell lines.

Caspase-13 Antibody - References

Humke EW, Ni J, Dixit VM. ERICE, a novel FLICE-activatable caspase. J Biol Chem 1998;273:15702-7 (WD0500)