

DcR1 Antibody
Catalog # ASC10112**Specification**

DcR1 Antibody - Product Information

Application	WB, IF
Primary Accession	O14798
Other Accession	AF012536 , 2338421
Reactivity	Human, Mouse, Rat
Host	Rabbit
Clonality	Polyclonal
Isotype	IgG
Calculated MW	65 kDa KDa
Application Notes	DcR1 antibody can be used for detection of DcR1 by Western blot at 1 µg/mL. An approximate 65 kDa band can be detected. Antibody can also be used for immunofluorescence starting at 10 µg/mL. For immunofluorescence start at 20 µg/mL.

DcR1 Antibody - Additional InformationGene ID **8794****Other Names**

DcR1 Antibody: LIT, DCR1, TRID, CD263, TRAILR3, TRAIL-R3, DCR1-TNFR, LIT, UNQ321/PRO366, Tumor necrosis factor receptor superfamily member 10C, Decoy TRAIL receptor without death domain, DcR1, tumor necrosis factor receptor superfamily, member 10c, decoy without an intracellular domain

Target/Specificity

TNFRSF10C;

Reconstitution & Storage

DcR1 antibody can be stored at 4°C for three months and -20°C, stable for up to one year. As with all antibodies care should be taken to avoid repeated freeze thaw cycles. Antibodies should not be exposed to prolonged high temperatures.

Precautions

DcR1 Antibody is for research use only and not for use in diagnostic or therapeutic procedures.

DcR1 Antibody - Protein Information**Name** TNFRSF10C**Synonyms** DCR1, LIT, TRAILR3, TRID**Function**

Receptor for the cytotoxic ligand TRAIL. Lacks a cytoplasmic death domain and hence is not

capable of inducing apoptosis. May protect cells against TRAIL mediated apoptosis by competing with TRAIL- R1 and R2 for binding to the ligand.

Cellular Location

Cell membrane; Lipid-anchor, GPI-anchor.

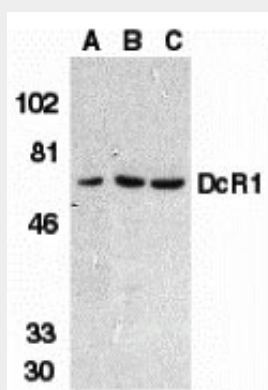
Tissue Location

Higher expression in normal tissues than in tumor cell lines. Highly expressed in peripheral blood lymphocytes, spleen, skeletal muscle, placenta, lung and heart

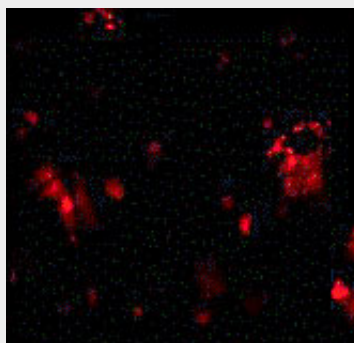
DcR1 Antibody - Protocols

Provided below are standard protocols that you may find useful for product applications.

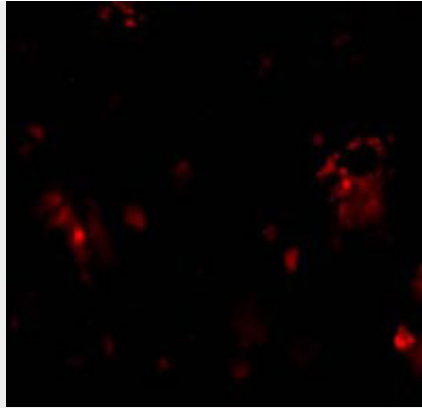
- [Western Blot](#)
- [Blocking Peptides](#)
- [Dot Blot](#)
- [Immunohistochemistry](#)
- [Immunofluorescence](#)
- [Immunoprecipitation](#)
- [Flow Cytometry](#)
- [Cell Culture](#)

DcR1 Antibody - Images

Western blot analysis of DcR1 in HeLa cell (A), mouse (B) and rat (C) liver tissue lysates with DcR1 antibody at 1 µg/mL.



Immunofluorescence of DcR1 in rat liver tissue with DcR1 antibody at 10 µg/mL.



Immunofluorescence of DcR1 in Rat Liver cells with DcR1 antibody at 20 µg/mL.

DcR1 Antibody - Background

DcR1 Antibody: Apoptosis is induced by certain cytokines including TNF and Fas ligand in the TNF family through their death domain containing receptors. TRAIL/Apo2L is a new member of the TNF family and induces apoptosis of a variety of tumor cell lines. DR4 and DR5 are the recently identified functional receptors for TRAIL. Two decoy receptors for TRAIL have been identified and designated DcR1/TRID/TRAIL-R3/LIT and DcR2/TRAIL-R4/TRUNDD. DcR1 has extracellular TRAIL-binding domain but lacks intracellular signaling domain. It is a glycosphospholipid-anchored cell surface protein. DcR1 transcripts are expressed in many normal human tissues but not in most cancer cell lines. Overexpression of DcR1 did not induce apoptosis, but attenuated TRAIL-induced apoptosis.

DcR1 Antibody - References

Pan G; O'Rourke K; Chinnaiyan et al.. The receptor for the cytotoxic ligand TRAIL. Science; 1997;276:111-113
Pan G, Ni J, Wei YF, et al. An antagonist decoy receptor and a death domain-containing receptor for TRAIL. Science 1997;277:815-8
Sheridan JP, Marsters SA, Pitti RM, et al. A. Control of TRAIL-induced apoptosis by a family of signaling and decoy receptors. Science 1997;277:818-21
Degli-Esposti MA, Smolak PJ, Walczak H, et al, Smith CA. Cloning and characterization of TRAIL-R3, a novel member of the emerging TRAIL receptor family. J Exp Med 1997;186(7):1165-70