

**IL-21 Receptor Antibody**  
**Catalog # ASC10144****Specification**

---

**IL-21 Receptor Antibody - Product Information**

Application	IHC
Primary Accession	<a href="#">Q9HBE5</a>
Other Accession	<a href="#">NP_068570</a> , <a href="#">50615</a>
Reactivity	Human, Mouse, Rat
Host	Rabbit
Clonality	Polyclonal
Isotype	IgG
Calculated MW	60 kDa KDa
Application Notes	IL-21 receptor antibody can be used for detection of IL-21 receptor by Western blot at 1 µg/mL. An approximately 60 kDa band can be detected. For immunofluorescence start at 20 µg/mL.

**IL-21 Receptor Antibody - Additional Information**Gene ID **50615****Other Names**

IL-21 Receptor Antibody: NILR, CD360, NILR, UNQ3121/PRO10273, Interleukin-21 receptor, Novel interleukin receptor, IL-21 receptor, interleukin 21 receptor

**Target/Specificity**

IL-21 receptor antibody was raised against a synthetic peptide corresponding to amino acids 20 to 32 of human IL-21 receptor precursor.<br><br>The immunogen is located within the first 50 amino acids of IL-21 Receptor.

**Reconstitution & Storage**

IL-21 Receptor antibody can be stored at 4°C for three months and -20°C, stable for up to one year. As with all antibodies care should be taken to avoid repeated freeze thaw cycles. Antibodies should not be exposed to prolonged high temperatures.

**Precautions**

IL-21 Receptor Antibody is for research use only and not for use in diagnostic or therapeutic procedures.

**IL-21 Receptor Antibody - Protein Information****Name** IL21R**Synonyms** NILR**Function**

This is a receptor for interleukin-21.

**Cellular Location**

Membrane; Single-pass type I membrane protein.

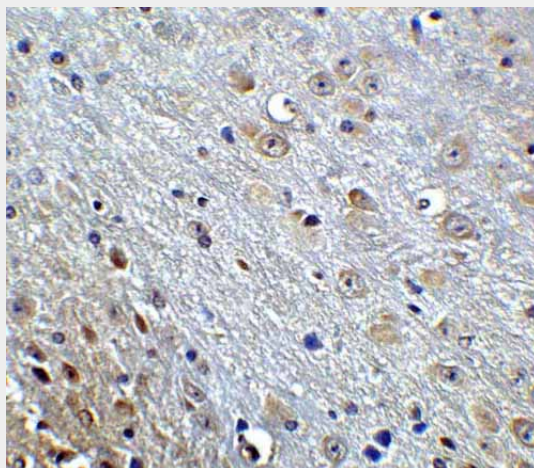
**Tissue Location**

Selectively expressed in lymphoid tissues. Most highly expressed in thymus and spleen

**IL-21 Receptor Antibody - Protocols**

Provided below are standard protocols that you may find useful for product applications.

- [Western Blot](#)
- [Blocking Peptides](#)
- [Dot Blot](#)
- [Immunohistochemistry](#)
- [Immunofluorescence](#)
- [Immunoprecipitation](#)
- [Flow Cytometry](#)
- [Cell Culture](#)

**IL-21 Receptor Antibody - Images**

Immunohistochemistry of APP in mouse brain tissue with APP Antibody at 5 µg/mL.

**IL-21 Receptor Antibody - Background**

IL-21 Receptor Antibody: A novel cytokine related to IL2 and IL15 was recently identified and designated IL-21. The receptor for IL-21 (IL-21R, also termed NILR for novel Interleukin receptor) is a new member of the class I cytokine receptor family. IL-21R forms a complex with the common cytokine receptor gamma chain, gammac, and mediates IL-21 signaling. Both IL-21R and the gc are necessary for the IL-21 function. IL-21 and its receptor activate JAK-STAT signaling pathway. IL-21R is expressed in spleen, thymus, natural killer (NK), T and B cell lines. IL-21 plays a role in the proliferation and maturation of NK, B and T cell populations.

**IL-21 Receptor Antibody - References**

Parrish-Novak J, Dillon SR, Nelson A, et al. Interleukin 21 and its receptor are involved in NK cell expansion and regulation of lymphocyte function. *Nature*. 2000;408(6808):57-63.  
Ozaki K, Kikly K, Michalovich D, et al. Cloning of a type I cytokine receptor most related to the IL-2 receptor  $\beta$  chain. *Proc Natl Acad Sci USA*. 2000;97(21):11439-44.

Asao H, Okuyama C, Kumaki S, et al. the common  $\gamma$ -chain is an indispensable subunit of the IL-21 receptor complex. J Immunol. 2001;167(1):1-5.  
Vosshenrich CA, Di Santo JP. Cytokines: IL-21 joins the  $\gamma(c)$ -dependent network Curr Biol. 2001;11(5):R175-7.