

MCG10 Antibody
Catalog # ASC10145**Specification**

MCG10 Antibody - Product Information

Application	WB, ICC, IF
Primary Accession	P57723
Other Accession	EAW65166 , 119585570
Reactivity	Human
Host	Rabbit
Clonality	Polyclonal
Isotype	IgG
Application Notes	MCG10 antibody can be used for detection of MCG10 by Western blot at 0.5 - 2 µg/mL. Antibody can also be used for immunocytochemistry starting at 1 µg/mL. For immunofluorescence start at 20 µg/mL.

MCG10 Antibody - Additional Information

Gene ID	57060
Other Names	
MCG10 Antibody: CBP, LIP4, MCG10Alpha-CP4, poly(rC) binding protein 4	

Target/Specificity
PCBP4;**Reconstitution & Storage**

MCG10 antibody can be stored at 4°C for three months and -20°C, stable for up to one year. As with all antibodies care should be taken to avoid repeated freeze thaw cycles. Antibodies should not be exposed to prolonged high temperatures.

Precautions

MCG10 Antibody is for research use only and not for use in diagnostic or therapeutic procedures.

MCG10 Antibody - Protein Information**Name** PCBP4**Function**

Single-stranded nucleic acid binding protein that binds preferentially to oligo dC.

Cellular Location

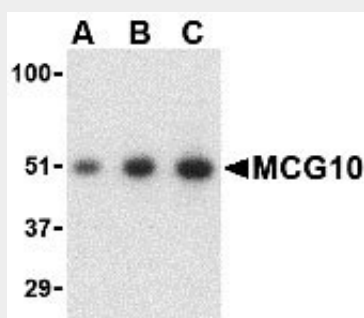
Cytoplasm.

MCG10 Antibody - Protocols

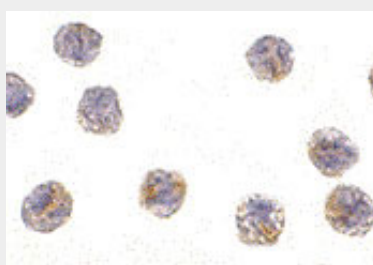
Provided below are standard protocols that you may find useful for product applications.

- [Western Blot](#)
- [Blocking Peptides](#)
- [Dot Blot](#)
- [Immunohistochemistry](#)
- [Immunofluorescence](#)
- [Immunoprecipitation](#)
- [Flow Cytometry](#)
- [Cell Culture](#)

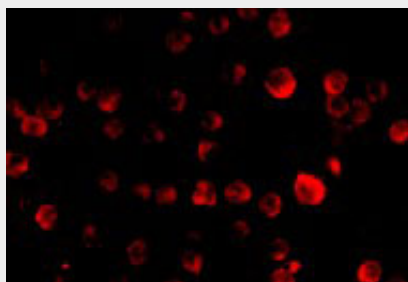
MCG10 Antibody - Images



Western blot analysis of MCG10 in HeLa cell lysate with MCG10 antibody at (A) 0.5, (B) 1 and (C) 2 $\mu\text{g/mL}$.



Immunocytochemistry of MCG10 in HeLa cells with MCG10 antibody at 1 $\mu\text{g/mL}$.



Immunofluorescence of MCG10 in HeLa cells with MCG10 antibody at 20 $\mu\text{g/mL}$.

MCG10 Antibody - Background

MCG10 Antibody: MCG10 is a member of the KH-domain RNA-binding protein family. Proteins of this family also referred to as alpha-CPs, bind to RNA with specificity for C-rich pyrimidine regions. Alpha-CPs play important roles in post-transcriptional activities and have different cellular distributions. MCG10 is induced by p53 and DNA damage via two p53-responsive promoter elements. Its overexpression in transfected cells results in the suppression of cell proliferation by inducing apoptosis and cell cycle arrest in G2-M. Decreased expression of one isoform of MCG10

has been observed in many forms of lung cancer, leading to speculation that MCG10 can act as a tumor suppressor. Multiple alternatively spliced isoforms of MCG10 have been identified.

MCG10 Antibody - References

Makeyev AV and Liebhaber SA. The poly(C)-binding proteins: a multiplicity of functions and a search for mechanisms. RNA2002; 8:265-78.

Zhu J and Chen X. MCG10, a novel p53 target gene that encodes a KH domain RNA-binding protein, is capable of inducing apoptosis and cell cycle arrest in G2-M. Mol. Cell Biol.2000; 20:5602-5618.

Pio R, Zudaire I, Pino I, et al. a-CP-4, encoded by a putative tumor suppressor gene at 3p21, but not its alternative splice variant aCP-4a, is underexpressed in lung cancer. Cancer Res.2004; 64:4171-9.