

TLR11 Antibody
Catalog # ASC10236**Specification**

TLR11 Antibody - Product Information

Application	WB, ICC, IF
Primary Accession	Q6R5P0
Other Accession	NP_991388 , 45429992
Reactivity	Mouse
Host	Rabbit
Clonality	Polyclonal
Isotype	IgG
Application Notes	TLR11 antibody polyclonal antibody can be used for detection of TLR11 by Western blot at 0.5 to 2 µg/mL. Antibody can also be used for immunocytochemistry starting at 10 µg/mL. For immunofluorescence start at 10 µg/mL.

TLR11 Antibody - Additional Information

Gene ID	239081
Other Names	
TLR11 Antibody: Gm287, Gm287, Toll-like receptor 11, toll-like receptor 11	

Target/Specificity
Tlr11;**Reconstitution & Storage**

TLR11 antibody can be stored at 4°C for three months and -20°C, stable for up to one year. As with all antibodies care should be taken to avoid repeated freeze thaw cycles. Antibodies should not be exposed to prolonged high temperatures.

Precautions

TLR11 Antibody is for research use only and not for use in diagnostic or therapeutic procedures.

TLR11 Antibody - Protein Information

Name Tlr11 {ECO:0000303|PubMed:14993594, ECO:0000312|MGI:MGI:3045226}

Function

Participates in the innate immune response to microbial agents. Acts via MYD88 and TRAF6, leading to NF-kappa-B activation, cytokine secretion and the inflammatory response.

Cellular Location

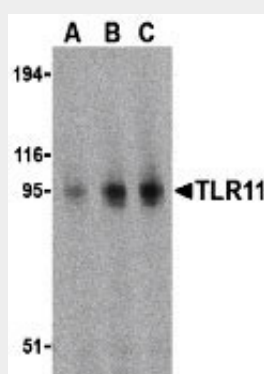
Membrane; Single-pass type I membrane protein

TLR11 Antibody - Protocols

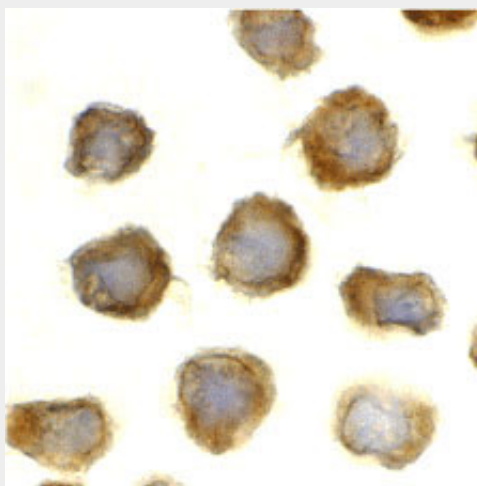
Provided below are standard protocols that you may find useful for product applications.

- [Western Blot](#)
- [Blocking Peptides](#)
- [Dot Blot](#)
- [Immunohistochemistry](#)
- [Immunofluorescence](#)
- [Immunoprecipitation](#)
- [Flow Cytometry](#)
- [Cell Culture](#)

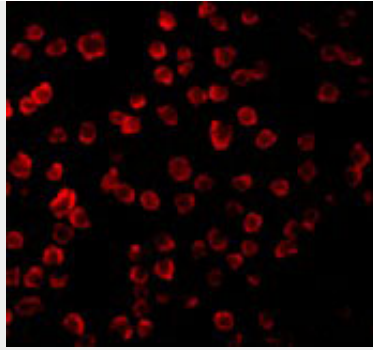
TLR11 Antibody - Images



Western blot analysis of TLR11 in RAW264.7 cell lysates with TLR11 antibody at (A) 0.5, (B) 1, and (C) 2 $\mu\text{g/mL}$.



Immunocytochemistry of TLR11 in RAW264.7 cells with TLR11 antibody at 10 $\mu\text{g/mL}$



Immunofluorescence of TLR11 in Raw264 cells with TLR11 antibody at 10 µg/mL.

TLR11 Antibody - Background

TLR11 Antibody: Toll-like receptors (TLRs) are signaling molecules that recognize different microbial products during infection and serve as an important link between the innate and adaptive immune responses. These proteins act through adaptor molecules such as MyD88 and TIRAP to activate various kinases and transcription factors. TLR11 is one of three mouse TLRs that lack a human ortholog. It is activated specifically by uropathogenic bacteria, and mice lacking TLR11 showed a much greater susceptibility to uropathogenic infections, indicating a potentially important role for TLR11 in preventing infections in the urogenital system.

TLR11 Antibody - References

Vogel SN, Fitzgerald KA, and Fenton MJ. TLRs: differential adapter utilization by toll-like receptors mediates TLR-specific patterns of gene expression. *Mol. Interv.* 2003; 3:466-77.
Takeda K, Kaisho T, and Akira S. Toll-like receptors. *Annu. Rev. Immunol.* 2003; 21:335-76.
Janeway CA Jr. and Medzhitov R. Innate immune recognition. *Annu. Rev. Immunol.* 2002; 20:197-216.
O'Neill LAJ, Fitzgerald FA, and Bowie AG. The Toll-IL-1 receptor adaptor family grows to five members. *Trends in Imm.* 2003; 24:286-9.