

CTRP3 Antibody
Catalog # ASC10336**Specification**

CTRP3 Antibody - Product Information

Application	WB, IHC, IF
Primary Accession	Q9BXJ4
Other Accession	NP_852100 , 62739183
Reactivity	Human, Mouse
Host	Rabbit
Clonality	Polyclonal
Isotype	IgG
Calculated MW	Predicted: 35 kDa

Application Notes	Observed: 36 kDa KDa CTRP3 antibody can be used for the detection of CTRP3 by Western blot at 1 µg/mL. Antibody can also be used for immunohistochemistry starting at 2 µg/mL. For immunofluorescence start at 10 µg/mL.
-------------------	---

CTRP3 Antibody - Additional Information

Gene ID **114899**

Other Names

CTRP3 Antibody: CORS, CORCS, CTRP3, CORS26, C1ATNF3, CORS-26, UNQ753/PRO1484, Complement C1q tumor necrosis factor-related protein 3, Collagenous repeat-containing sequence 26 kDa protein, C1q and tumor necrosis factor related protein 3

Target/Specificity

C1QTNF3; Multiple isoforms of CTRP3 are known to exist. CTRP3 antibody is predicted to not recognize other members of the CTRP protein family.

Reconstitution & Storage

CTRP3 antibody can be stored at 4°C for three months and -20°C, stable for up to one year. As with all antibodies care should be taken to avoid repeated freeze thaw cycles. Antibodies should not be exposed to prolonged high temperatures.

Precautions

CTRP3 Antibody is for research use only and not for use in diagnostic or therapeutic procedures.

CTRP3 Antibody - Protein Information

Name C1QTNF3

Synonyms CTRP3

Cellular Location

Secreted.

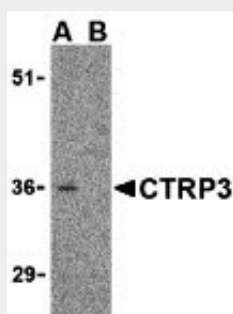
Tissue Location

Expressed in colon and small intestine.

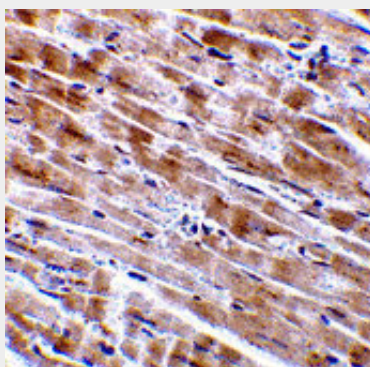
CTRP3 Antibody - Protocols

Provided below are standard protocols that you may find useful for product applications.

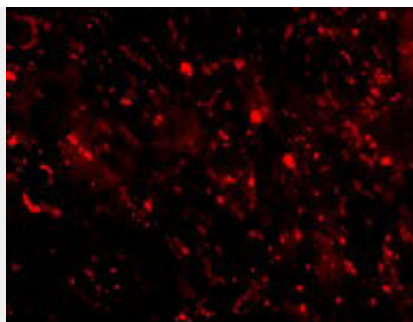
- [Western Blot](#)
- [Blocking Peptides](#)
- [Dot Blot](#)
- [Immunohistochemistry](#)
- [Immunofluorescence](#)
- [Immunoprecipitation](#)
- [Flow Cytometry](#)
- [Cell Culture](#)

CTRP3 Antibody - Images

Western blot analysis of CTRP3 in mouse heart cell lysate with CTRP3 antibody at 1 μ g/mL in the (A) absence and (B) presence of blocking peptide.



Immunohistochemistry of CTRP3 in mouse heart tissue with CTRP3 antibody at 2 μ g/mL.



Immunofluorescence of CTRP3 in Mouse Heart tissue with CTRP3 antibody at 10 µg/mL.

CTRP3 Antibody - Background

CTRP3 Antibody: Adipose tissue of an organism plays a major role in regulating physiologic and pathologic processes such as metabolism and immunity by producing and secreting a variety of bioactive molecules termed adipokines. One highly conserved family of adipokines is adiponectin/ACRP30 and its structural and functional paralogs, the C1q/tumor necrosis factor- α -related proteins (CTRPs) 1-7. Unlike adiponectin, which is expressed exclusively by differentiated adipocytes, the CTRPs are expressed in a wide variety of tissues. An analysis of the crystal structure of adiponectin revealed a structural and evolutionary link between TNF and C1q-containing proteins, suggesting that these proteins arose from a common ancestral innate immunity gene. It has been suggested that CTRP3 may play a role in skeletal development.

CTRP3 Antibody - References

Fantuzzi G. Adipose tissue, adipokines, and inflammation. *J. Allergy Clin. Immunol.* 2005; 115:911-9.

Tsao T-S, Lodish HF, and Fruebis J. ACRP30, a new hormone controlling fat and glucose metabolism. *Euro. J. Pharmacol.* 2002; 440:213-21.

Wong GW, Wang J, Hug C, et al. A family of Acrp30/ adiponectin structural and functional paralogs. *Proc. Natl. Acad. Sci. USA* 2004; 101:10302-7.

Shapiro L and Scherer PE. The crystal structure of a complement-1q family protein suggests an evolutionary link to tumor necrosis factor. *Curr. Biol.* 1998; 8:335-8.