

RPA Interacting Protein Antibody
Catalog # ASC10488**Specification**

RPA Interacting Protein Antibody - Product Information

Application	WB, IHC
Primary Accession	Q86UA6
Other Accession	NP_001028174 , 74136541
Reactivity	Human, Mouse, Rat
Host	Rabbit
Clonality	Polyclonal
Isotype	IgG
Application Notes	RPA Interacting Protein antibody can be used for detection of RPA Interacting Protein by Western blot at 1 - 2 µg/mL. Antibody can also be used for immunohistochemistry starting at 2.5 µg/mL.

RPA Interacting Protein Antibody - Additional InformationGene ID **84268****Other Names**

RPA Interacting Protein Antibody: RIP, HRIP, RIP, RPA-interacting protein, hRIP, RPA interacting protein

Target/Specificity

RPAIN;

Reconstitution & Storage

RPA Interacting Protein antibody can be stored at 4°C for three months and -20°C, stable for up to one year. As with all antibodies care should be taken to avoid repeated freeze thaw cycles. Antibodies should not be exposed to prolonged high temperatures.

Precautions

RPA Interacting Protein Antibody is for research use only and not for use in diagnostic or therapeutic procedures.

RPA Interacting Protein Antibody - Protein Information**Name** RPAIN**Synonyms** RIP**Function**

Mediates the import of RPA complex into the nucleus, possibly via some interaction with importin beta. Isoform 2 is sumoylated and mediates the localization of RPA complex into the PML body of the nucleus, thereby participating in RPA function in DNA metabolism.

Cellular Location

[Isoform 1]: Cytoplasm. Nucleus.

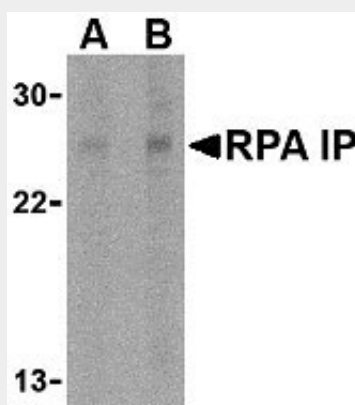
Tissue Location

Widely expressed. Expressed in pancreas, kidney, muscle, liver, lung, placenta, brain, heart, leukocytes, colon, intestine, ovary, testis, prostate, thymus and spleen

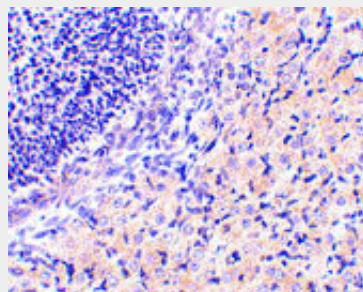
RPA Interacting Protein Antibody - Protocols

Provided below are standard protocols that you may find useful for product applications.

- [Western Blot](#)
- [Blocking Peptides](#)
- [Dot Blot](#)
- [Immunohistochemistry](#)
- [Immunofluorescence](#)
- [Immunoprecipitation](#)
- [Flow Cytometry](#)
- [Cell Culture](#)

RPA Interacting Protein Antibody - Images

Western blot analysis of RPA Interacting Protein in Jurkat cell lysate with RPA Interacting Protein antibody at (A) 1 and (B) 2 µg/mL.



Immunohistochemistry of RPA Interacting Protein in mouse stomach tissue with RPA Interacting Protein antibody at 2.5 µg/mL.

RPA Interacting Protein Antibody - Background

RPA Interacting Protein Antibody: Replication protein A (RPA) is a single-stranded-DNA binding protein involved in numerous eukaryotic DNA processes including replication, repair and

recombination. RPA interacting protein (RPA IP) has been identified as an adapter protein that is involved in RPA nuclear import instead of the prototypical importin proteins that normally mediate nuclear import. Multiple isoforms of RPA IP are known to exist, with the longest isoform localized to the cytoplasm. Isoform 2 is sumoylated and is located in the PML nuclear body within the nucleus. It has been suggested that this isoform mediates the localization of the RPA complex into the PML nuclear body, thereby participating in RPA function in DNA metabolism.

RPA Interacting Protein Antibody - References

Zou Y, Liu Y, Wu X, et al. Functions of human replication protein A (RPA): from DNA replication to DNA damage and stress responses. *J. Cell Physiol.* 2006; 208:267-73.

Jullien D, Gorlich D, Laemmli UK, et al. Nuclear import of RPA in *Xenopus* egg extracts requires a novel protein XRIPalpha but not importin α . *EMBO J.* 1999; 18:4348-58.

Park J, Seo T, Kim H, et al. Sumoylation of the novel protein hRIPbeta is involved in replication protein A deposition in PML nuclear bodies. *Mol. Cell Biol.* 2005; 25:8202-14.

(06-01D)