

**Neurotrypsin Antibody**  
**Catalog # ASC10525****Specification**

---

**Neurotrypsin Antibody - Product Information**

Application	WB, IHC, IF
Primary Accession	<a href="#">P56730</a>
Other Accession	<a href="#">CAA04816</a> , <a href="#">2661424</a>
Reactivity	Human, Mouse, Rat
Host	Rabbit
Clonality	Polyclonal
Isotype	IgG
Calculated MW	Predicted: 96 kDa

Application Notes	<b>Observed: 96 kDa KDa</b> Neurotrypsin antibody can be used for detection of neurotrypsin by Western blot at 0.5 - 2 µg/mL. Antibody can also be used for immunohistochemistry starting at 2.5 µg/mL. For immunofluorescence start at 20 µg/mL.
-------------------	--

**Neurotrypsin Antibody - Additional Information**

Gene ID **8492**

**Other Names**

Neurotrypsin Antibody: MRT1, BSSP3, BSSP-3, Neurotrypsin, Leydin, protease, serine, 12 (neurotrypsin, motopsin)

**Target/Specificity**

PRSS12;

**Reconstitution & Storage**

Neurotrypsin antibody can be stored at 4°C for three months and -20°C, stable for up to one year. As with all antibodies care should be taken to avoid repeated freeze thaw cycles. Antibodies should not be exposed to prolonged high temperatures.

**Precautions**

Neurotrypsin Antibody is for research use only and not for use in diagnostic or therapeutic procedures.

**Neurotrypsin Antibody - Protein Information**

**Name** PRSS12

**Function**

Plays a role in neuronal plasticity and the proteolytic action may subserve structural reorganizations associated with learning and memory operations.

**Cellular Location**

Secreted.

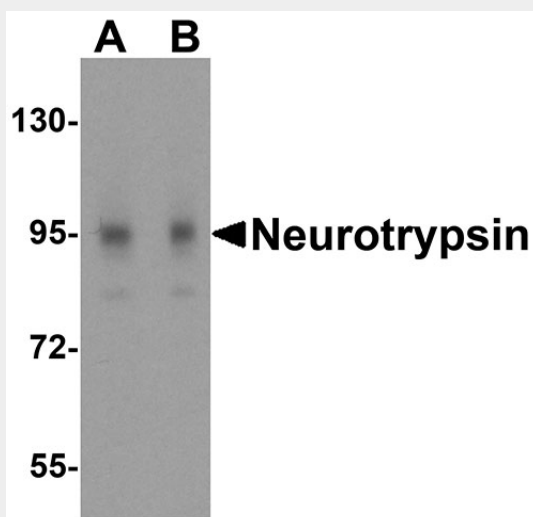
**Tissue Location**

Brain and Leydig cells of the testis.

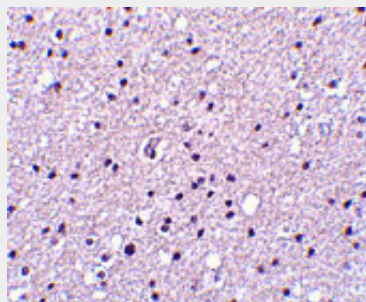
**Neurotrypsin Antibody - Protocols**

Provided below are standard protocols that you may find useful for product applications.

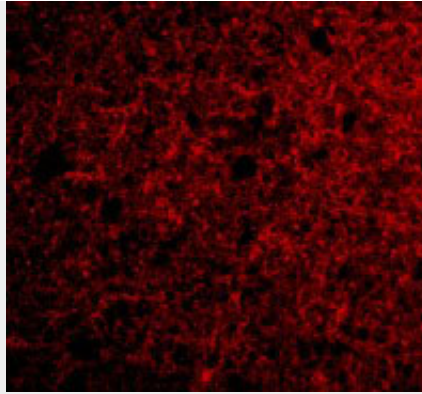
- [Western Blot](#)
- [Blocking Peptides](#)
- [Dot Blot](#)
- [Immunohistochemistry](#)
- [Immunofluorescence](#)
- [Immunoprecipitation](#)
- [Flow Cytometry](#)
- [Cell Culture](#)

**Neurotrypsin Antibody - Images**

Western blot analysis of neurotrypsin in 3T3 cell lysate with neurotrypsin antibody at (A) 0.25 and (B) 0.5 µg/mL.



Immunohistochemistry of Neurotrypsin in human brain tissue with Neurotrypsin antibody at 2.5 µg/mL.



Immunofluorescence of Neurotrypsin in Human Brain cells with Neurotrypsin antibody at 20  $\mu\text{g/mL}$ .

### **Neurotrypsin Antibody - Background**

**Neurotrypsin Antibody:** Neurotrypsin is a central nervous system-expressed serine protease whose truncation or absence causes nonsyndromic mental retardation. It is most prominently expressed in structures that are involved in the processing and storage of learned behavior and memory, such as the cerebral cortex, the hippocampus, and amygdala. Evidence suggests that neurotrypsin has multiple functions, including axonal outgrowth, maintaining neuronal plasticity, and arranging the perineuronal environment, partly in coordination with other proteases including tissue plasminogen activator. At least two isoforms of neurotrypsin are known to exist.

### **Neurotrypsin Antibody - References**

Gschwend TP, Krueger SR, Kozlov SV, et al. Neurotrypsin, a novel multidomain serine protease expressed in the nervous system. *Mol. Cell. Neurosci.*1997; 9:207-19.  
Molinari F, Rio M, Meskanaite V, et al. Truncating neurotrypsin mutation in autosomal recessive nonsyndromic mental retardation. *Science*2002; 1779-81.  
Mitsui S, Yamaguchi N, Osako Y, et al. Enzymatic properties and localization of motopsin (PRSS12), a protease whose absence causes mental retardation. *Brain Res.*2007; 1136:1-12.