

**SCRAPPER Antibody**  
**Catalog # ASC10635****Specification**

---

**SCRAPPER Antibody - Product Information**

Application	WB, IHC, IF
Primary Accession	<a href="#">Q96IG2</a>
Other Accession	<a href="#">NP_116264</a> , <a href="#">27734755</a>
Reactivity	Human, Mouse, Rat
Host	Rabbit
Clonality	Polyclonal
Isotype	IgG
Application Notes	SCRAPPER antibody can be used for detection of SCRAPPER by Western blot at 0.5 - 1 µg/mL. Antibody can also be used for immunohistochemistry starting at 2.5 µg/mL. For immunofluorescence start at 20 µg/mL.

**SCRAPPER Antibody - Additional Information**

Gene ID	84961
<b>Target/Specificity</b>	
FBXL20;	

**Reconstitution & Storage**

SCRAPPER antibody can be stored at 4°C for three months and -20°C, stable for up to one year. As with all antibodies care should be taken to avoid repeated freeze thaw cycles. Antibodies should not be exposed to prolonged high temperatures.

**Precautions**

SCRAPPER Antibody is for research use only and not for use in diagnostic or therapeutic procedures.

**SCRAPPER Antibody - Protein Information**

**Name** FBXL20

**Synonyms** FBL2

**Function**

Substrate-recognition component of the SCF (SKP1-CUL1-F-box protein)-type E3 ubiquitin ligase complex. Role in neural transmission (By similarity).

**Cellular Location**

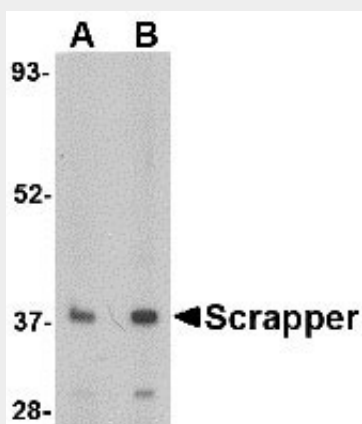
Cytoplasm.

## SCRAPPER Antibody - Protocols

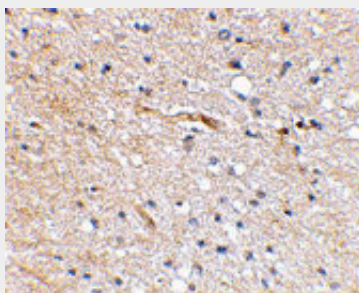
Provided below are standard protocols that you may find useful for product applications.

- [Western Blot](#)
- [Blocking Peptides](#)
- [Dot Blot](#)
- [Immunohistochemistry](#)
- [Immunofluorescence](#)
- [Immunoprecipitation](#)
- [Flow Cytometry](#)
- [Cell Culture](#)

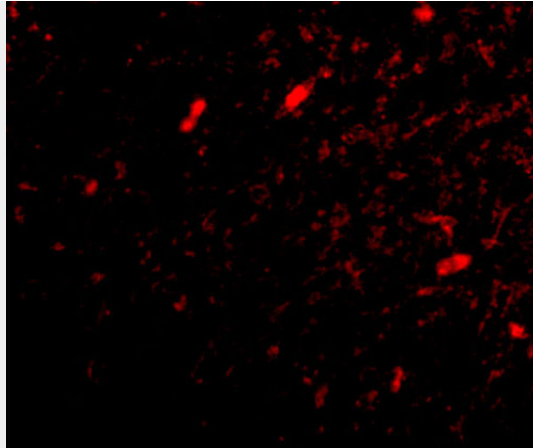
## SCRAPPER Antibody - Images



Western blot analysis of SCRAPPER in A20 cell lysate with SCRAPPER antibody at (A) 0.5 and (B) 1  $\mu\text{g/mL}$ .



Immunohistochemical staining of human brain tissue using Scrapper antibody at 2.5  $\mu\text{g/mL}$ .



Immunofluorescence of scrapper in human brain tissue with scrapper antibody at 20 µg/mL.

### **SCRAPPER Antibody - Background**

SCRAPPER Antibody: Members of the F-box protein family, such as Scrapper, are characterized by an approximately 40-amino acid F-box motif. SCF complexes, formed by SKP1, cullin, and F-box proteins, act as protein-ubiquitin ligases. Scrapper is selectively expressed in the brain, broadly expressed within the mouse CNS and is abundant at presynaptic membrane. Scrapper has orthologs in *C. elegans*, *D. melanogaster*, and mammals which suggests that it might function as an important membrane-localized E3 ligase in various species. Scrapper is a major presynaptic E3 ubiquitin ligase that acts through RIM1a via degradation and the ubiquitin-proteasome-system (UPS) pathway to critically regulate synaptic transmission. This identifies protein degradation as a mechanism for holding synaptic communication in check.

### **SCRAPPER Antibody - References**

Ho MS, Tsai PI, and Chien CT. F-box proteins: the key to protein degradation. *J. Biomed. Sci.* 2006; 13:181-91.  
Dobie F and Craig AM. A fight for neurotransmission: SCRAPPER trashes RIM. *Cell* 2007; 130:775-7.  
Yao I, Takagi H, Ageta H, et al. SCRAPPER-dependent ubiquitination of active zone protein RIM1 regulates synaptic vesicle release. *Cell* 2007; 130:943-57.  
Ding M, Chao D, Wang G, et al. Spatial regulation of an E3 ubiquitin ligase directs selective synapse elimination. *Science* 2007; 317:947-51.