

BRAL1 Antibody
Catalog # ASC10655**Specification**

BRAL1 Antibody - Product Information

Application	WB, IHC, IF
Primary Accession	Q9GZV7
Other Accession	NP_068589 , 11141887
Reactivity	Human, Mouse, Rat
Host	Rabbit
Clonality	Polyclonal
Isotype	IgG
Application Notes	BRAL1 antibody can be used for the detection of BRAL1 by Western blot at 1 - 2 µg/mL. Antibody can also be used for immunohistochemistry starting at 2.5 µg/mL. For immunofluorescence start at 20 µg/mL.

BRAL1 Antibody - Additional Information

Gene ID	60484
Target/Specificity	
HAPLN2;	

Reconstitution & Storage

BRAL1 antibody can be stored at 4°C for three months and -20°C, stable for up to one year. As with all antibodies care should be taken to avoid repeated freeze thaw cycles. Antibodies should not be exposed to prolonged high temperatures.

Precautions

BRAL1 Antibody is for research use only and not for use in diagnostic or therapeutic procedures.

BRAL1 Antibody - Protein Information

Name HAPLN2

Synonyms BRAL1

Function

Mediates a firm binding of versican V2 to hyaluronic acid. May play a pivotal role in the formation of the hyaluronan-associated matrix in the central nervous system (CNS) which facilitates neuronal conduction and general structural stabilization. Binds to hyaluronic acid (By similarity).

Cellular Location

Secreted, extracellular space, extracellular matrix {ECO:0000250|UniProtKB:Q9ESM3}

Tissue Location

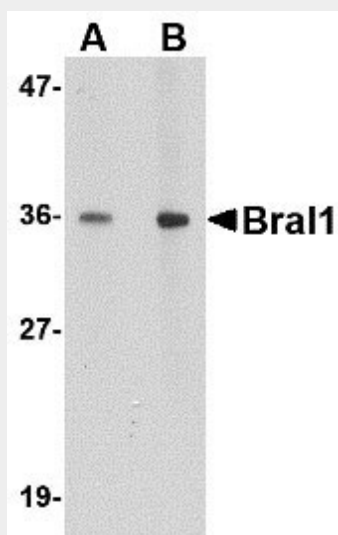
Expressed only in adult brain.

BRAL1 Antibody - Protocols

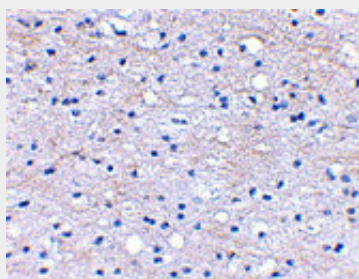
Provided below are standard protocols that you may find useful for product applications.

- [Western Blot](#)
- [Blocking Peptides](#)
- [Dot Blot](#)
- [Immunohistochemistry](#)
- [Immunofluorescence](#)
- [Immunoprecipitation](#)
- [Flow Cytometry](#)
- [Cell Culture](#)

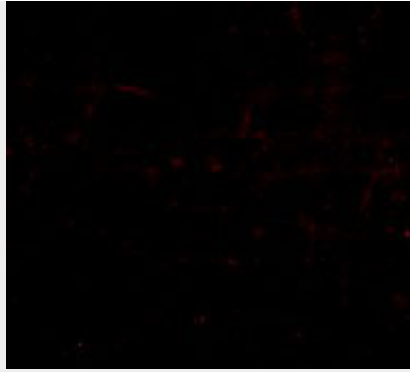
BRAL1 Antibody - Images



Western blot analysis of BRAL1 in human brain tissue lysate with BRAL1 antibody at (A) 1 and (B) 2 µg/mL.



Immunohistochemical staining of human brain tissue using BRAL1 antibody at 2.5 µg/mL.



Immunofluorescence of BRAL1 in Human Brain cells with BRAL1 antibody at 20 µg/mL.

BRAL1 Antibody - Background

BRAL1 Antibody: BRAL1 is a member a superfamily consisting of several highly homologous hyaluronan and proteoglycan binding link proteins. BRAL1 is predominantly expressed in brain tissue and spinal cord. Like other members in the link-module superfamily, BRAL1 contains an immunoglobulin-like fold and two proteoglycan tandem repeats (PTRs). Its mRNA expression pattern is similar to other lectican proteoglycans, suggesting that BRAL1 may act to stabilize the binding between the extracellular matrix molecule hyaluronan and brevican. Immunostaining of mouse brain showed BRAL1 expression at P20 in the white matter of the developing cerebellum and in myelinated fiber tracts in the adult brain, suggesting that expression starts when axonal myelination occurs.

BRAL1 Antibody - References

Spicer AP, Joo A, and Bowling Jr. RA. A hyaluronan binding link protein gene family whose members are physically linked adjacent to chondroitin sulfate proteoglycan core protein genes. *J. Biol. Chem.*2003; 278:21083-91.

Hirakawa S, Oohashi T, Su W-D, et al. The brain link protein-1 (BRAL1): cDNA cloning, genomic structure, and characterization as a novel link protein expressed in adult brain. *Biochem. Biophys. Res. Comm.*2000; 276:982-9.

Oohashi T, Hirakawa S, Bekku Y, et al. Bral1, a brain-specific link protein, colocalizing with the versican V2 isoform at the nodes of Ranvier in developing and adult mouse central nervous systems. *Mol. Cell Neurosci.*2002; 19:43-57.