

Unc93a Antibody
Catalog # ASC10673**Specification**

Unc93a Antibody - Product Information

Application	WB
Primary Accession	Q86WB7
Other Accession	AAH99718 , 71043465
Reactivity	Human
Host	Rabbit
Clonality	Polyclonal
Isotype	IgG
Application Notes	Unc93a antibody can be used for the detection of Unc93a by Western blot at 0.5 - 1 µg/mL.

Unc93a Antibody - Additional InformationGene ID **54346****Target/Specificity**

UNC93A; Two isoforms of Unc93a are known to exist. This antibody will not cross-react with Unc93b.

Reconstitution & Storage

Unc93a antibody can be stored at 4°C for three months and -20°C, stable for up to one year. As with all antibodies care should be taken to avoid repeated freeze thaw cycles. Antibodies should not be exposed to prolonged high temperatures.

Precautions

Unc93a Antibody is for research use only and not for use in diagnostic or therapeutic procedures.

Unc93a Antibody - Protein Information**Name** UNC93A**Cellular Location**

Cell membrane; Multi-pass membrane protein

Tissue Location

Expressed in testis, small intestine, spleen, prostate and ovary.

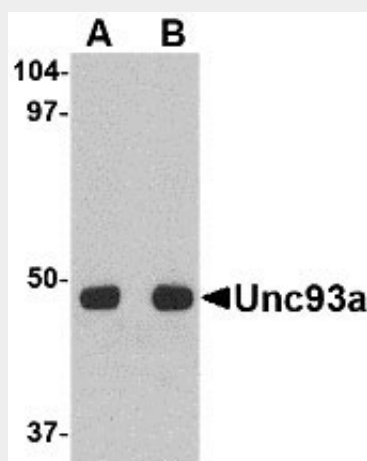
Unc93a Antibody - Protocols

Provided below are standard protocols that you may find useful for product applications.

- [Western Blot](#)

- [Blocking Peptides](#)
- [Dot Blot](#)
- [Immunohistochemistry](#)
- [Immunofluorescence](#)
- [Immunoprecipitation](#)
- [Flow Cytometry](#)
- [Cell Culture](#)

Unc93a Antibody - Images



Western blot analysis of Unc93a in HeLa cell lysate with Unc93a antibody at (A) 0.5 and (B) 1 μ g/mL.

Unc93a Antibody - Background

Unc93a Antibody: Unc93a, a human homolog of the *C. elegans* Unc93 gene, was initially identified by the sequencing of chromosome 6q27 at D6S193 as loss at this region correlated with sporadic ovarian cancer. Further analysis however, showed no tumor suppressor role for Unc93a. Unlike Unc93b, another homolog of the *C. elegans* Unc93 gene that is crucial for Toll-like receptor (TLR) signaling, the function of Unc93a is unknown. It is expressed in testis, small intestine, spleen, prostate and ovary.

Unc93a Antibody - References

Liu Y, Dodds P, Emilion G, et al. The human homolog of unc-93 maps to chromosome 6q27 - characterisation and analysis in sporadic epithelial ovarian cancer. *BioMed Central Genetics*2002; 3:20.
Massey DC and Parkes M. Genome-wide association scanning highlights two autophagy genes, ATG16L1 and IRGM, as being significantly associated with Crohn's disease. *Autophagy*2007; 3:649-51.