

**CAPS1 Antibody**  
**Catalog # ASC10677****Specification**

---

**CAPS1 Antibody - Product Information**

Application	WB, IHC, IF
Primary Accession	<a href="#">O9ULU8</a>
Other Accession	<a href="#">NP_899631</a> , <a href="#">34452713</a>
Reactivity	Human, Mouse, Rat
Host	Rabbit
Clonality	Polyclonal
Isotype	IgG
Application Notes	CAPS1 antibody can be used for detection of CAPS1 by Western blot at 0.5 - 1 µg/mL. Antibody can also be used for immunohistochemistry starting at 5 µg/mL. For immunofluorescence start at 20 µg/mL.

**CAPS1 Antibody - Additional Information**Gene ID **8618****Target/Specificity**

CADPS; Numerous isoforms of CAPS1 are known to exist; the lower molecular weight bands seen in the immunoblot image are likely to be these isoforms. This CAPS1 antibody is predicted to be specific to CAPS1 and not recognize CAPS2.

**Reconstitution & Storage**

CAPS1 antibody can be stored at 4°C for three months and -20°C, stable for up to one year. As with all antibodies care should be taken to avoid repeated freeze thaw cycles. Antibodies should not be exposed to prolonged high temperatures.

**Precautions**

CAPS1 Antibody is for research use only and not for use in diagnostic or therapeutic procedures.

**CAPS1 Antibody - Protein Information****Name** CADPS**Synonyms** CAPS, CAPS1, KIAA1121**Function**

Calcium-binding protein involved in exocytosis of vesicles filled with neurotransmitters and neuropeptides. Probably acts upstream of fusion in the biogenesis or maintenance of mature secretory vesicles. Regulates catecholamine loading of DCVs. May specifically mediate the Ca(2+)-dependent exocytosis of large dense-core vesicles (DCVs) and other dense-core vesicles by acting as a PtdIns(4,5)P2- binding protein that acts at prefusion step following ATP-dependent priming and participates in DCVs-membrane fusion. However, it may also participate in small clear synaptic vesicles (SVs) exocytosis and it is unclear whether its function is related to Ca(2+)

triggering (By similarity).

#### Cellular Location

Synapse {ECO:0000250|UniProtKB:Q62717}. Cytoplasmic vesicle, secretory vesicle, neuronal dense core vesicle membrane {ECO:0000250|UniProtKB:Q62717}; Peripheral membrane protein {ECO:0000250|UniProtKB:Q62717}. Note=Membrane-associated to vesicles Strongly enriched in synaptic fractions. Preferentially binds to dense core vesicles but not to synaptic vesicles. Binds phosphoinositides, with a strong selectivity for PtdIns(4,5)P2 over PtdIns(3,4,5)P3. Probably localizes to different vesicles compared to CADPS2 {ECO:0000250|UniProtKB:Q62717}

#### Tissue Location

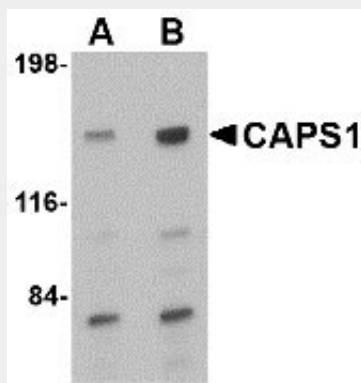
Specifically expressed in neural and endocrine secretory tissues. Expressed in brain and pancreas and at low level in heart. Also expressed in fetal heart, cerebellum, cerebral cortex, medulla, occipital pole, frontal and temporal lobes, and putamen, as well as weak expression in spinal cord.

### CAPS1 Antibody - Protocols

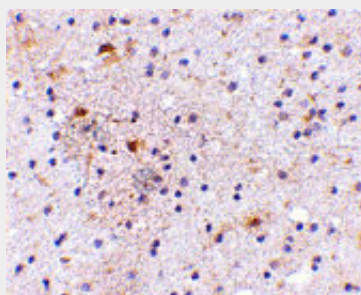
Provided below are standard protocols that you may find useful for product applications.

- [Western Blot](#)
- [Blocking Peptides](#)
- [Dot Blot](#)
- [Immunohistochemistry](#)
- [Immunofluorescence](#)
- [Immunoprecipitation](#)
- [Flow Cytometry](#)
- [Cell Culture](#)

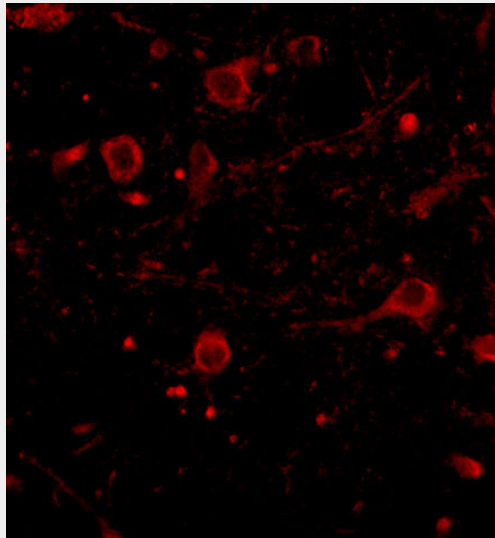
### CAPS1 Antibody - Images



Western blot analysis of CAPS1 in rat brain tissue lysate with CAPS1 antibody at (A) 0.5 and (B) 1 µg/mL.



Immunohistochemistry of CAPS1 in human brain with CAPS1 antibody at 5 µg/mL.



Immunofluorescence of CAPS1 in human brain tissue with CAPS1 antibody at 20 µg/mL.

#### **CAPS1 Antibody - Background**

**CAPS1 Antibody:** CAPS1 and its related protein CAPS2 encode novel neural/endocrine-specific cytosolic and peripheral membrane proteins. Both are essential components of the synaptic vesicle priming machinery and are required for the  $\text{Ca}^{2+}$ -regulated exocytosis of secretory vesicles; CAPS-deficient neurons contain no or very few fusion competent synaptic vesicles, causing a selective impairment of fast phasic transmitter release. CAPS1 acts at a stage in exocytosis that follows ATP-dependent priming, which involves the essential synthesis of phosphatidylinositol 4, 5-bisphosphate and is thought to be a specific regulator of large dense-core vesicle fusion.

#### **CAPS1 Antibody - References**

Walent JH, Porter BW, and Martin TF. A novel 145 kD brain cytosolic protein reconstitutes  $\text{Ca}^{2+}$ -regulated secretion in permeable neuroendocrine cells. *Cell*1992; 70:765-775.  
Juckusch WJ, Speidel D, Sigler A, et al. CAPS-1 and CAPS-2 are essential synaptic vesicle priming proteins. *Cell*2007; 131:796-808.  
Rupnick M, Kreft M, Sikdat SK, et al. Rapid regulated dense-core vesicle exocytosis requires the CAPS protein. *Proc. Natl. Acad. Sci. USA*2000; 97:5627-32.