

GRTP1 Antibody
Catalog # ASC10685**Specification**

GRTP1 Antibody - Product Information

Application	WB, ICC, IF
Primary Accession	Q5TC63
Other Accession	EAX09206 , 119629611
Reactivity	Human, Mouse, Rat
Host	Rabbit
Clonality	Polyclonal
Isotype	IgG
Application Notes	GRTP1 antibody can be used for detection of GRTP1 by Western blot at 1 - 2 µg/mL. Antibody can also be used for immunocytochemistry starting at 2.5 µg/mL. For immunofluorescence start at 20 µg/mL.

GRTP1 Antibody - Additional Information

Gene ID	79774
Target/Specificity	
GRTP1;	

Reconstitution & Storage

GRTP1 antibody can be stored at 4°C for three months and -20°C, stable for up to one year. As with all antibodies care should be taken to avoid repeated freeze thaw cycles. Antibodies should not be exposed to prolonged high temperatures.

Precautions

GRTP1 Antibody is for research use only and not for use in diagnostic or therapeutic procedures.

GRTP1 Antibody - Protein Information

Name GRTP1

Synonyms TBC1D6

Function

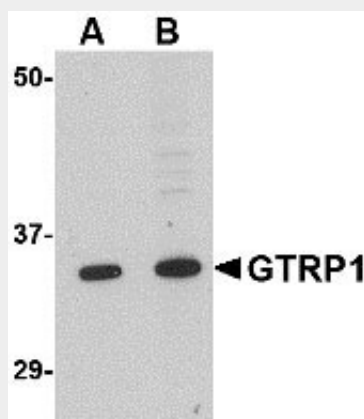
May act as a GTPase-activating protein for Rab family protein(s).

GRTP1 Antibody - Protocols

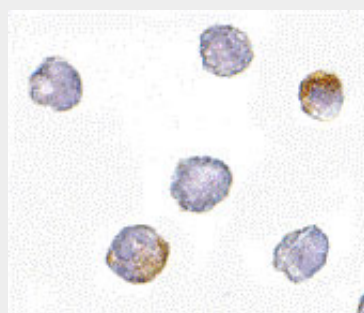
Provided below are standard protocols that you may find useful for product applications.

- [Western Blot](#)
- [Blocking Peptides](#)
- [Dot Blot](#)
- [Immunohistochemistry](#)
- [Immunofluorescence](#)
- [Immunoprecipitation](#)
- [Flow Cytometry](#)
- [Cell Culture](#)

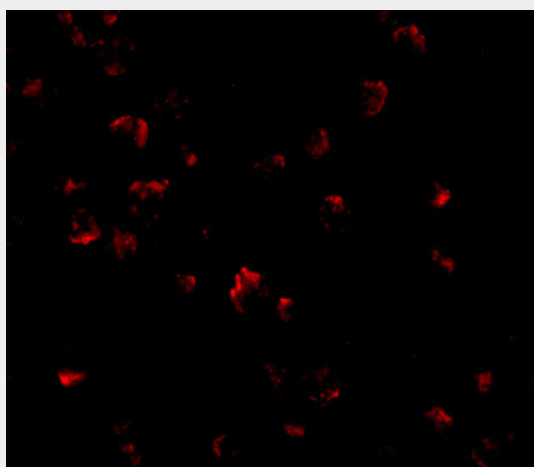
GRTP1 Antibody - Images



Western blot analysis of GRTP1 in K562 cell lysate with GRTP1 antibody at (A) 1 and (B) 2 µg/mL.



Immunocytochemistry of GRTP1 in K562 cells with GRTP1 antibody at 2.5 µg/mL.



Immunofluorescence of GRTP1 in K562 cells with GRTP1 antibody at 20 µg/mL.

GRTP1 Antibody - Background

GRTP1 Antibody: Growth hormone regulated TBC protein 1 (GRTP1) was identified through microarray analysis as a gene whose expression is regulated by growth hormone (GH). It contains the TBC signature motif of GTPase activator proteins of Rab-like small GTPases. GRTP1 mRNA is expressed at highest levels in testes, and is also present in kidney, lung, liver, and intestine. Administration of GH to mice resulted in an increase in GRTP1 mRNA in testes, but a decrease of GRTP1 mRNA in kidney and liver. GRTP1 was identified as an HIV dependency factor (HDF), suggesting that GRTP1 may be an important drug target in HIV treatment. At least three isoforms of GRTP1 are known to exist; this antibody should recognize all isoforms.

GRTP1 Antibody - References

Lu C, Kasik J, Stephan DA, et al. Grtp1, a novel gene regulated by growth hormone. *Endocrinology* 2001; 142:4568-71.

Brass AL, Dykxhoorn DM, Benita Y, et al. Identification of host proteins required for HIV infection through a functional genomic screen. *Science* 2008; 319:921-6.