

NENF Antibody
Catalog # ASC10746**Specification**

NENF Antibody - Product Information

| | |
|-------------------|--|
| Application | WB, IHC, IF |
| Primary Accession | Q9UMX5 |
| Other Accession | NP_037481 , 7019545 |
| Reactivity | Human, Mouse, Rat |
| Host | Rabbit |
| Clonality | Polyclonal |
| Isotype | IgG |
| Application Notes | NENF antibody can be used for detection of NENF by Western blot at 1 - 2 µg/mL. Despite its predicted molecular weight of ~20kDa, NENF is observed at 37 kDa in SDS-PAGE. Antibody can also be used for immunohistochemistry starting at 10 µg/mL. For immunofluorescence start at 20 µg/mL. |

NENF Antibody - Additional Information

| | |
|--------------------|-------|
| Gene ID | 29937 |
| Target/Specificity | |
| NENF; | |

Reconstitution & Storage

NENF antibody can be stored at 4°C for three months and -20°C, stable for up to one year. As with all antibodies care should be taken to avoid repeated freeze thaw cycles. Antibodies should not be exposed to prolonged high temperatures.

Precautions

NENF Antibody is for research use only and not for use in diagnostic or therapeutic procedures.

NENF Antibody - Protein Information

Name NENF ([HGNC:30384](#))

Synonyms CIR2, SPUF

Function

Acts as a neurotrophic factor in postnatal mature neurons enhancing neuronal survival (PubMed:31536960). Promotes cell proliferation and neurogenesis in undifferentiated neural progenitor cells at the embryonic stage and inhibits differentiation of astrocytes (By similarity). Its neurotrophic activity is exerted via MAPK1/ERK2, MAPK3/ERK1 and AKT1/AKT pathways (By similarity). Neurotrophic activity is enhanced by binding to heme (By similarity). Acts also as an anorexigenic neurotrophic

factor that contributes to energy balance (By similarity).

Cellular Location

Secreted, extracellular space. Mitochondrion. Endoplasmic reticulum. Note=Localized to mitochondria and endoplasmic reticulum by PINK1 and PARK7

Tissue Location

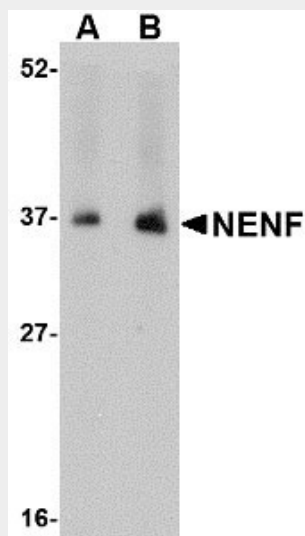
Ubiquitously expressed with high expression in heart. Over-expressed in various tumors including carcinomas of the uterine cervix, lymphoma, colon, lung, skin and leukemia, as well as carcinoma of the breast.

NENF Antibody - Protocols

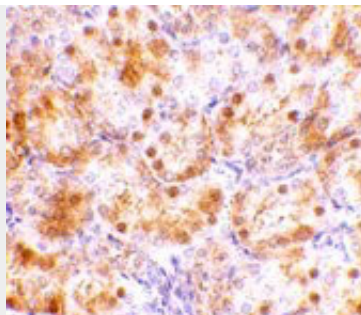
Provided below are standard protocols that you may find useful for product applications.

- [Western Blot](#)
- [Blocking Peptides](#)
- [Dot Blot](#)
- [Immunohistochemistry](#)
- [Immunofluorescence](#)
- [Immunoprecipitation](#)
- [Flow Cytometry](#)
- [Cell Culture](#)

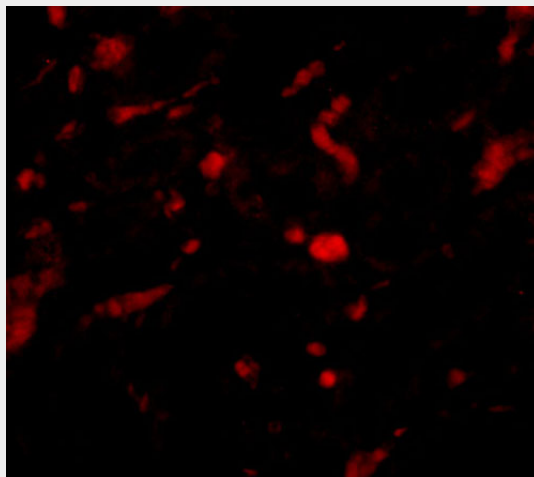
NENF Antibody - Images



Western blot analysis of NENF in human kidney tissue lysate with NENF antibody at (A) 1 and (B) 2 µg/mL.



Immunohistochemistry of NENF in rat kidney tissue with NENF antibody at 10 µg/mL.



Immunofluorescence of NENF in rat kidney tissue with NENF antibody at 20 µg/mL.

NENF Antibody - Background

NENF Antibody: NENF is a secreted protein that is expressed in neurons but not glial cells of the brain. This protein has neurotrophic activity in primary cultured mouse neurons but not mitogenic activity in primary cultured mouse astrocytes. NENF activated mitogen-activated protein (MAP) and phosphatidylinositol-3 kinase pathways and could be inhibited by pertussis toxin but not receptor tyrosine kinases, suggesting that NENF acts through a Gi/Go-protein-coupled receptor.

NENF Antibody - References

Kimura I, Yoshioka M, Konishi M, et al. Neudesin, a novel secreted protein with a unique primary structure and neurotrophic activity. J. Neurosci. Res.2005; 79:287-94.