

ZBED2 Antibody
Catalog # ASC10884**Specification**

ZBED2 Antibody - Product Information

Application	WB, ICC
Primary Accession	Q9BTP6
Other Accession	NP_078784 , 56790947
Reactivity	Human
Host	Rabbit
Clonality	Polyclonal
Isotype	IgG
Application Notes	ZBED2 antibody can be used for detection of ZBED2 by Western blot at 1 - 2 µg/mL. Antibody can also be used for immunocytochemistry starting at 5 µg/mL.

ZBED2 Antibody - Additional InformationGene ID **79413****Target/Specificity**

ZBED2; This antibody is predicted to have no cross-reactivity to ZBED1 or ZBED3.

Reconstitution & Storage

ZBED2 antibody can be stored at 4°C for three months and -20°C, stable for up to one year. As with all antibodies care should be taken to avoid repeated freeze thaw cycles. Antibodies should not be exposed to prolonged high temperatures.

Precautions

ZBED2 Antibody is for research use only and not for use in diagnostic or therapeutic procedures.

ZBED2 Antibody - Protein Information**Name** ZBED2**Function**

Transcriptional regulator which has intrinsic repressor activity and which competes with the transcriptional activator IRF1 for binding to the 5'-[CA]GAA[AC]C[CT]-3' consensus sequence in gene promoters (PubMed:32385160). May thereby play a role in keratinocyte differentiation (PubMed:31552090).

Cellular Location

Nucleus.

Tissue Location

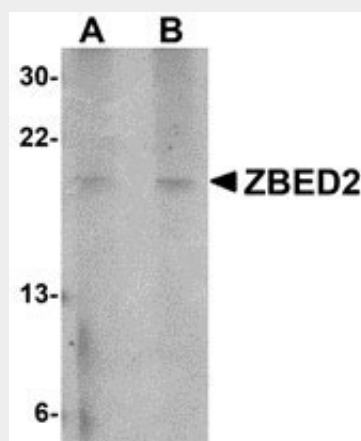
Expressed in keratinocytes.

ZBED2 Antibody - Protocols

Provided below are standard protocols that you may find useful for product applications.

- [Western Blot](#)
- [Blocking Peptides](#)
- [Dot Blot](#)
- [Immunohistochemistry](#)
- [Immunofluorescence](#)
- [Immunoprecipitation](#)
- [Flow Cytometry](#)
- [Cell Culture](#)

ZBED2 Antibody - Images



Western blot analysis of ZBED2 in A549 cell lysate with ZBED2 antibody at (A) 1 and (B) 2 μ g/mL.



Immunocytochemistry of ZBED2 in A549 cells with ZBED2 antibody at 5 μ g/mL.

ZBED2 Antibody - Background

ZBED2 Antibody: The ZBED2 protein possesses a BED-type zinc finger, a 50 to 60 amino acid domain that contains a characteristic motif with two highly conserved aromatic positions, as well as a shared pattern of cysteines and histidines that is predicted to form the zinc finger. ZBED2 was identified through a screening of 37 human gastric cancer cDNA libraries. While the function of this protein unknown at this time, the presence of the zinc finger suggests that it may have DNA or RNA binding properties.

ZBED2 Antibody - References

Oh J-H, Yang JO, Hahn Y, et al. Transcriptome analysis of human gastric cancer. Mamm.

Genome2005; 16:942-54.