

**beta-Galactosidase Antibody**  
**Catalog # ASC10900****Specification**

---

**beta-Galactosidase Antibody - Product Information**

Application	WB
Primary Accession	<a href="#">Q8FKG6</a>
Other Accession	<a href="#">NP_752394</a> , <a href="#">26246355</a>
Reactivity	Bacteria
Host	Chicken
Clonality	Polyclonal
Isotype	IgY
Application Notes	beta-gal antibody can be used for detection of beta-gal by Western blot at 1 µg/mL.

**beta-Galactosidase Antibody - Additional Information**

Gene ID	1036228
Target/Specificity	
lacZ;	

**Reconstitution & Storage**

beta-Galactosidase antibody can be stored at 4°C for three months and -20°C, stable for up to one year. As with all antibodies care should be taken to avoid repeated freeze thaw cycles. Antibodies should not be exposed to prolonged high temperatures.

**Precautions**

beta-Galactosidase Antibody is for research use only and not for use in diagnostic or therapeutic procedures.

**beta-Galactosidase Antibody - Protein Information**

**Name** lacZ {ECO:0000255|HAMAP-Rule:MF\_01687}

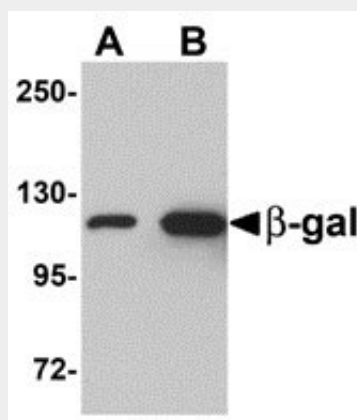
**beta-Galactosidase Antibody - Protocols**

Provided below are standard protocols that you may find useful for product applications.

- [Western Blot](#)
- [Blocking Peptides](#)
- [Dot Blot](#)
- [Immunohistochemistry](#)
- [Immunofluorescence](#)
- [Immunoprecipitation](#)
- [Flow Cytometry](#)

- [Cell Culture](#)

## beta-Galactosidase Antibody - Images



Western blot analysis of (A) 5 and (B) 25 ng of b-gal with b-gal antibody at 1  $\mu$ g/mL.

## beta-Galactosidase Antibody - Background

beta-Galactosidase Antibody: Beta-galactosidase (beta-gal), an inducible enzyme that catalyses the hydrolysis of lactose and other beta-galactosides into monosaccharides, is a product of the LacZ operon, and is a homo-tetrameric protein consisting of four identical subunits of approximately 114 kDa each. The enzyme is commonly used as a reporter gene in molecular biology to assess the efficiency of transfection.

## beta-Galactosidase Antibody - References

Matthews BW. The structure of E. coli beta-galactosidase. C. R. Biol.2005; 328:549-56.