

**IA-6 Antibody**  
**Catalog # ASC10989****Specification**

---

**IA-6 Antibody - Product Information**

Application	WB
Primary Accession	<a href="#">Q96T92</a>
Other Accession	<a href="#">AAI30380</a> , <a href="#">120659844</a>
Reactivity	Human, Mouse, Rat
Host	Rabbit
Clonality	Polyclonal
Isotype	IgG
Application Notes	IA-6 antibody can be used for detection of IA-6 by Western blot at 1 - 2 µg/mL.

**IA-6 Antibody - Additional Information**

Gene ID	84684
<b>Target/Specificity</b>	
INSM2;	

**Reconstitution & Storage**

IA-6 antibody can be stored at 4°C for three months and -20°C, stable for up to one year. As with all antibodies care should be taken to avoid repeated freeze thaw cycles. Antibodies should not be exposed to prolonged high temperatures.

**Precautions**

IA-6 Antibody is for research use only and not for use in diagnostic or therapeutic procedures.

**IA-6 Antibody - Protein Information**

**Name** INSM2

**Synonyms** IA6

**Function**

May function as a growth suppressor or tumor suppressor in liver cells and in certain neurons.

**Cellular Location**

Cytoplasm. Nucleus.

**Tissue Location**

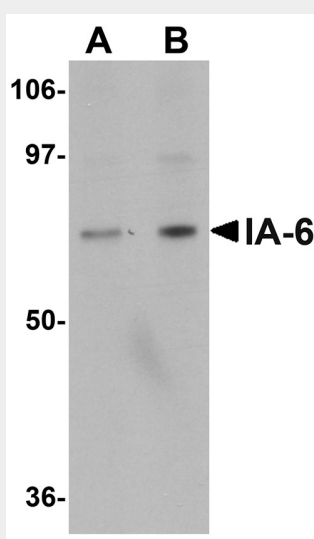
Expressed in heart, liver, skeletal muscle, kidney and pancreas, and, to a lesser extent, in brain, lung and spleen. In the pancreas, expressed in islet cells, including insulin- and glucagon-producing alpha- and beta-cells, but not in acinar cells (at protein level). Detected in adrenal glands, particularly in the deeper layer of the cortex (at protein level).

## IA-6 Antibody - Protocols

Provided below are standard protocols that you may find useful for product applications.

- [Western Blot](#)
- [Blocking Peptides](#)
- [Dot Blot](#)
- [Immunohistochemistry](#)
- [Immunofluorescence](#)
- [Immunoprecipitation](#)
- [Flow Cytometry](#)
- [Cell Culture](#)

## IA-6 Antibody - Images



Western blot analysis of IA-6 in rat thymus tissue lysate with IA-6 antibody at (A) 1 and (B) 2 µg/mL.

## IA-6 Antibody - Background

IA-6 Antibody: IA-6, also known as insulinoma-associated 2 or INSM2, is related to IA-1 (INSM1), a zinc-finger factor that is expressed in the developing nervous system. While the exact function of IA-6 is not known, other related insulinoma-associated proteins such as IA-2 are major autoantigens in type 1 diabetes. The homology exhibited by IA-6 to IA-1 has led to speculation that IA-6 may also play a role in the regulation of gene transcription.

## IA-6 Antibody - References

Ota T, Suzuki Y, Nishikawa T, et al. Complete sequencing and characterization of 21,243 full-length human cDNAs. *Nat. Genet.*2004; 36:40-5.  
Wildner H, Gierl MS, Strehle M, et al. Insm (IA-1) is a crucial component of the transcriptional network that controls differentiation of the sympathoadrenal lineage. *Dev.*2008; 135:473-81.  
Trembleau S, Penna G, Grigori S, et al. Early Th1 response in unprimed nonobese diabetic mice to the tyrosine phosphatase-like insulinoma-associated protein 2, an autoantigen in type 1 diabetes. *J. Immunol.*2000; 165:6748-55.