

**RHBDD2 Antibody**  
**Catalog # ASC11033****Specification**

---

**RHBDD2 Antibody - Product Information**

Application	WB, IF
Primary Accession	<a href="#">Q6NTF9</a>
Other Accession	<a href="#">NP_001035546</a> , <a href="#">94818790</a>
Reactivity	Human, Mouse, Rat
Host	Rabbit
Clonality	Polyclonal
Isotype	IgG
Application Notes	RHBDD2 antibody can be used for detection of RHBDD2 by Western blot at 1 - 2 µg/mL. For immunofluorescence start at 20 µg/mL.

**RHBDD2 Antibody - Additional Information**

Gene ID	57414
Target/Specificity	
RHBDD2;	

**Reconstitution & Storage**

RHBDD2 antibody can be stored at 4°C for three months and -20°C, stable for up to one year. As with all antibodies care should be taken to avoid repeated freeze thaw cycles. Antibodies should not be exposed to prolonged high temperatures.

**Precautions**

RHBDD2 Antibody is for research use only and not for use in diagnostic or therapeutic procedures.

**RHBDD2 Antibody - Protein Information**

**Name** RHBDD2

**Synonyms** RHBDL7

**Cellular Location**

Golgi apparatus, cis-Golgi network membrane; Multi-pass membrane protein

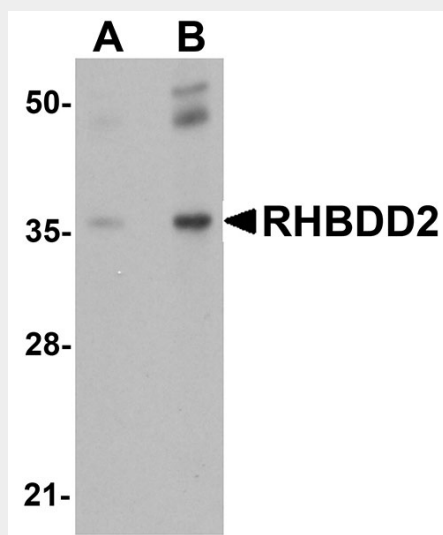
**RHBDD2 Antibody - Protocols**

Provided below are standard protocols that you may find useful for product applications.

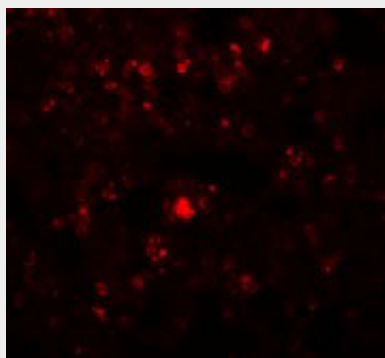
- [Western Blot](#)
- [Blocking Peptides](#)

- [Dot Blot](#)
- [Immunohistochemistry](#)
- [Immunofluorescence](#)
- [Immunoprecipitation](#)
- [Flow Cytometry](#)
- [Cell Culture](#)

### RHBDD2 Antibody - Images



Western blot analysis of RHBDD2 in rat lung tissue lysate with RHBDD2 antibody at (A) 1 and (B) 2  $\mu\text{g/mL}$ .



Immunofluorescence of RHBDD2 in Rat Lung cells with RHBDD2 antibody at 20  $\mu\text{g/mL}$ .

### RHBDD2 Antibody - Background

RHBDD2 Antibody: The Rhomboid family of proteins is made up of several widely conserved polytopic membrane serine proteases that play roles in growth and development. Little is known about the role of RHBDD2. Its overexpression in breast carcinoma appears to be an indicator of poor prognosis and may play a role in breast cancer progression. The related proteins RHBDD1 and RHBDD3 are both involved in the regulation of apoptosis, suggesting that RHBDD2 may also be involved in the modulation of apoptotic activity.

### RHBDD2 Antibody - References

Koonin EV, Makarova KS, Rogozin IB, et al. The rhomboids: a nearly ubiquitous family of intramembrane serine proteases that probably evolved by multiple horizontal gene transfers.

Genome Biol.2003; 4:R19.

Abba MC, Sun H, Hawkins KA, et al. Breast cancer molecular signatures as determined by SAGE: correlation with lymph node status. Mol. Cancer Res.2007; 5:881-90.

Abba MC, Lacunza E, Nunez MI, et al. Rhomboid domain containing 2 (RHBDD2): a novel cancer-related gene over-expressed in breast cancer. Biochim. Biophys. Acta2009; 1792:988-97.

Wang Y, Guan X, Fok KL, et al. A novel member of the rhomboid family, RHBDD1, regulates BIK-mediated apoptosis. Cell Mol. Life Sci.2008; 65:3822-9.