

ZC3H12D Antibody
Catalog # ASC11101**Specification****ZC3H12D Antibody - Product Information**

Application	WB
Primary Accession	A2A288
Other Accession	EAW47801 , 119568186
Reactivity	Human
Host	Rabbit
Clonality	Polyclonal
Isotype	IgG
Calculated MW	Predicted: 58 kDa

Application Notes	Observed: 57 kDa KDa ZC3H12D antibody can be used for detection of ZC3H12D by Western blot at 1 µg/mL.
-------------------	---

ZC3H12D Antibody - Additional Information

Gene ID	340152
Target/Specificity	
ZC3H12D;	

Reconstitution & Storage

ZC3H12D antibody can be stored at 4°C for three months and -20°C, stable for up to one year. As with all antibodies care should be taken to avoid repeated freeze thaw cycles. Antibodies should not be exposed to prolonged high temperatures.

Precautions

ZC3H12D Antibody is for research use only and not for use in diagnostic or therapeutic procedures.

ZC3H12D Antibody - Protein Information

Name ZC3H12D

Synonyms C6orf95, MCP1P4 {ECO:0000303|PubMed:1817

Function

May regulate cell growth likely by suppressing RB1 phosphorylation (PubMed:19531561). May function as RNase and regulate the levels of target RNA species (Potential). In association with ZC3H12A enhances the degradation of interleukin IL-6 mRNA level in activated macrophages (PubMed:26134560). Serve as a tumor suppressor in certain leukemia cells (PubMed:17210687).

Overexpression inhibits the G1 to S phase progression through suppression of RB1 phosphorylation (PubMed:19531561).

Cellular Location

Cytoplasm, P-body. Note=Colocalizes with ZC3H12A in GW bodies (GWBs) (PubMed:26134560) [Isoform 3]: Cytoplasm. Nucleus.

Tissue Location

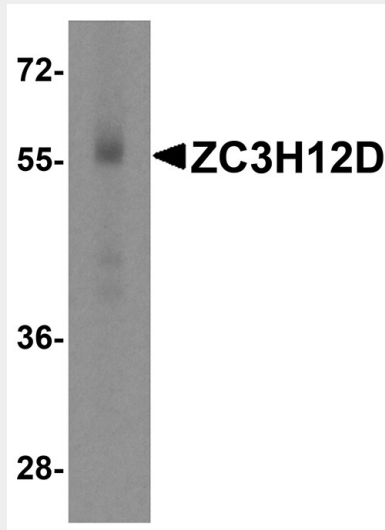
Expressed in normal human lymphocytes but defective in some leukemia/lymphoma cell lines.

ZC3H12D Antibody - Protocols

Provided below are standard protocols that you may find useful for product applications.

- [Western Blot](#)
- [Blocking Peptides](#)
- [Dot Blot](#)
- [Immunohistochemistry](#)
- [Immunofluorescence](#)
- [Immunoprecipitation](#)
- [Flow Cytometry](#)
- [Cell Culture](#)

ZC3H12D Antibody - Images



Western blot analysis of ZC3H12D in human spleen tissue lysate with ZC3H12D antibody at 1 µg/mL.

ZC3H12D Antibody - Background

ZC3H12D Antibody: ZC3H12D, also known as MCPIP4, is a member of a family of novel CCCH-zinc finger proteins that includes ZC3H12A, a protein that is thought to be involved in macrophage activation, host immunity and inflammatory diseases. ZC3H12D is highly expressed in spleen, intestine, and colon. Similar to ZC3H12A and ZC3H12C, ZC3H12D expression in murine macrophages is also increased after treatment with lipopolysaccharide (LPS), although not to the same level as ZC3H12A. This pattern of expression was not duplicated in human-derived

macrophages, suggesting it also may play a different role in host immunity and inflammatory response.

ZC3H12D Antibody - References

Zhou L, Azfer A, Niu J, et al. Monocyte chemoattractant protein-1 induces a novel transcription factor that causes cardiac myocyte apoptosis and ventricular dysfunction. *Circ. Res.*2006; 98:1177-85.

Liang J, Wang J, Azfer A, et al. A novel CCCH-zinc finger protein family regulates proinflammatory activation of macrophages. *J. Biol. Chem.*2008; 283:6337-46.