

ADAMTSL5 Antibody
Catalog # ASC11105**Specification**

ADAMTSL5 Antibody - Product Information

Application	WB, IHC, IF
Primary Accession	Q6ZMM2
Other Accession	NP_998769 , 226442878
Reactivity	Human, Mouse, Rat
Host	Chicken
Clonality	Polyclonal
Isotype	IgY
Application Notes	ADAMTSL5 antibody can be used for detection of ADAMTSL5 by Western blot at 1 µg/mL. Antibody can also be used for immunohistochemistry starting at 5 µg/mL. For immunofluorescence start at 20 µg/mL.

ADAMTSL5 Antibody - Additional Information

Gene ID	339366
Target/Specificity	
ADAMTSL5;	

Reconstitution & Storage

ADAMTSL5 antibody can be stored at 4°C for three months and -20°C, stable for up to one year. As with all antibodies care should be taken to avoid repeated freeze thaw cycles. Antibodies should not be exposed to prolonged high temperatures.

Precautions

ADAMTSL5 Antibody is for research use only and not for use in diagnostic or therapeutic procedures.

ADAMTSL5 Antibody - Protein Information

Name ADAMTSL5

Synonyms THSD6

Function

May play a role in modulation of fibrillin microfibrils in the extracellular matrix (ECM).

Cellular Location

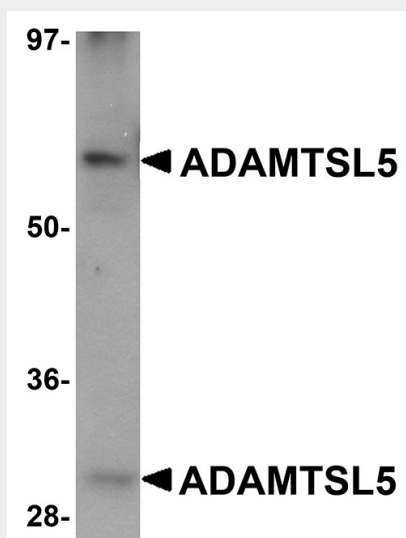
Secreted. Secreted, extracellular space, extracellular matrix. Note=Colocalized with fibrillin microfibrils. Predominantly distributed in baso-lateral regions of fibroblast extracellular matrix

ADAMTSL5 Antibody - Protocols

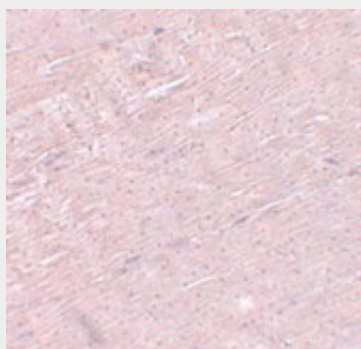
Provided below are standard protocols that you may find useful for product applications.

- [Western Blot](#)
- [Blocking Peptides](#)
- [Dot Blot](#)
- [Immunohistochemistry](#)
- [Immunofluorescence](#)
- [Immunoprecipitation](#)
- [Flow Cytometry](#)
- [Cell Culture](#)

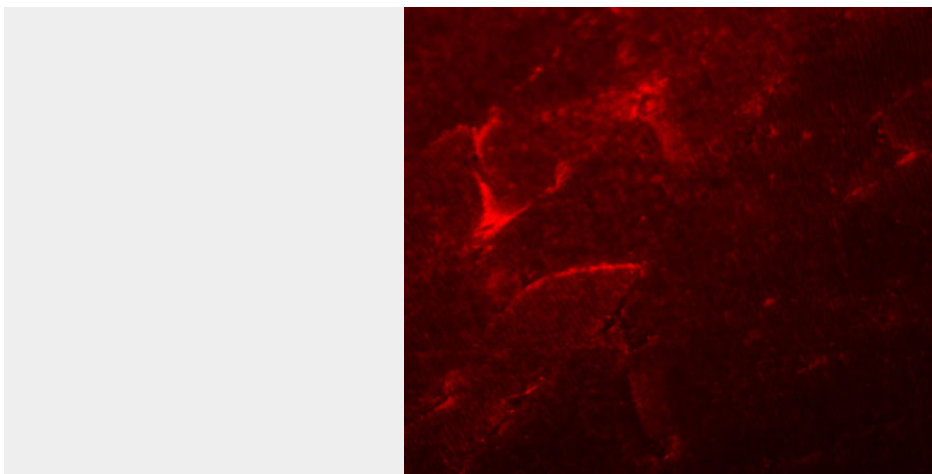
ADAMTSL5 Antibody - Images



Western blot analysis of ADAMTSL5 in human skeletal muscle tissue lysate with ADAMTSL5 antibody at 1 μ g/mL.



Immunohistochemistry of ADAMTSL5 in mouse skeletal muscle tissue with ADAMTSL5 antibody at 5 μ g/mL.



Immunofluorescence of ADAMTSL5 in mouse skeletal muscle tissue with ADAMTSL5 antibody at 20 $\mu\text{g/mL}$.

ADAMTSL5 Antibody - Background

ADAMTSL5 Antibody: ADAMTSL5 belongs to a large superfamily containing 20 ADAMTS proteases and at least eight ADAMTS-like proteins. ADAMTS proteases are secreted enzymes with a conserved organization that includes a metalloprotease domain and an ancillary domain containing one or more thrombospondin type 1 repeats (TSR). The ADAMTS-like subfamily comprises proteins homologous to the ADAMTS ancillary domains but lacking the protease domain and hence lacking catalytic activity. The exact role of ADAMTSL5 is currently unknown, but other ADAMTS-like proteins appear to have regulatory roles in the extracellular matrix.

ADAMTSL5 Antibody - References

Jones GC and Riley GP. ADAMTS proteinases: a multi-domain, multi-functional family with roles in extracellular matrix turnover and arthritis. *Arth. Res. and Ther.* 2005; 7:160-9.
Apte SS. A disintegrin-like and metalloprotease (reprolysin-type) with thrombospondin type 1 motif (ADAMTS) superfamily: functions and mechanisms. *J. Biol. Chem.* 2009; 284:31493-7.