

APC3 Antibody
Catalog # ASC11115**Specification**

APC3 Antibody - Product Information

Application	WB, IHC
Primary Accession	P30260
Other Accession	NP_001247 , 167466175
Reactivity	Human, Mouse, Rat
Host	Rabbit
Clonality	Polyclonal
Isotype	IgG
Application Notes	APC3 antibody can be used for detection of APC3 by Western blot at 1 - 2 µg/mL. Antibody can also be used for immunohistochemistry starting at 5 µg/mL.

APC3 Antibody - Additional Information

Gene ID	996
Target/Specificity	
CDC27;	

Reconstitution & Storage

APC3 antibody can be stored at 4°C for three months and -20°C, stable for up to one year. As with all antibodies care should be taken to avoid repeated freeze thaw cycles. Antibodies should not be exposed to prolonged high temperatures.

Precautions

APC3 Antibody is for research use only and not for use in diagnostic or therapeutic procedures.

APC3 Antibody - Protein Information

Name CDC27

Synonyms ANAPC3, D0S1430E, D17S978E

Function

Component of the anaphase promoting complex/cyclosome (APC/C), a cell cycle-regulated E3 ubiquitin ligase that controls progression through mitosis and the G1 phase of the cell cycle. The APC/C complex acts by mediating ubiquitination and subsequent degradation of target proteins: it mainly mediates the formation of 'Lys-11'-linked polyubiquitin chains and, to a lower extent, the formation of 'Lys-48'- and 'Lys-63'-linked polyubiquitin chains.

Cellular Location

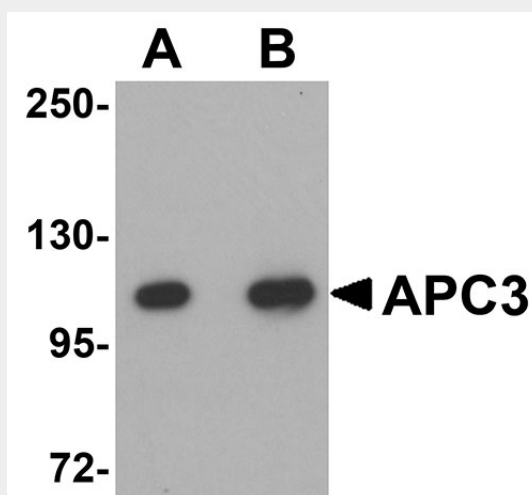
Nucleus. Cytoplasm, cytoskeleton, spindle

APC3 Antibody - Protocols

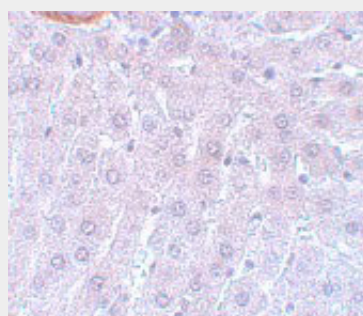
Provided below are standard protocols that you may find useful for product applications.

- [Western Blot](#)
- [Blocking Peptides](#)
- [Dot Blot](#)
- [Immunohistochemistry](#)
- [Immunofluorescence](#)
- [Immunoprecipitation](#)
- [Flow Cytometry](#)
- [Cell Culture](#)

APC3 Antibody - Images



Western blot analysis of APC3 in mouse liver tissue lysate with APC3 antibody at (A) 1 and (B) 2 $\mu\text{g/mL}$.



Immunohistochemistry of APC3 in rat liver tissue with APC3 antibody at 5 $\mu\text{g/mL}$.

APC3 Antibody - Background

APC3 Antibody: Cell cycle regulated protein ubiquitination and degradation within subcellular domains is thought to be essential for the normal progression of mitosis. APC3, also known as CDC27, a highly conserved component of the anaphase promoting complex/cyclosome (APC/C), is a cell cycle-regulated E3 ubiquitin ligase that controls progression through mitosis and the G1 phase of the cell cycle. APC/C is responsible for degrading anaphase inhibitors, mitotic cyclins, and spindle-associated proteins ensuring that events of mitosis take place in proper sequence. APC3

contains a tetratricopeptide repeat (TPR) region and interacts with mitotic checkpoint proteins including Mad2, p53CDC and BUBR1.

APC3 Antibody - References

JM Peters. The anaphase promoting complex/cyclosome: a machine designed to destroy. Nat. Rev. Mol. Cell Biol.2006; 7:644-56.

Jorgensen PM, Graslund S, Betz R, et al. Characterisation of the human APC1, the largest subunit of the anaphase-promoting complex. Gene2001; 262:51-9.