

**APC6 Antibody**  
**Catalog # ASC11118****Specification**

---

**APC6 Antibody - Product Information**

Application	WB, IHC, IF
Primary Accession	<a href="#">Q13042</a>
Other Accession	<a href="#">NP_003894</a> , <a href="#">118402580</a>
Reactivity	Human, Mouse
Host	Rabbit
Clonality	Polyclonal
Isotype	IgG
Application Notes	APC6 antibody can be used for detection of APC6 by Western blot at 1 - 2 µg/mL. Antibody can also be used for immunohistochemistry starting at 5 µg/mL. For immunofluorescence start at 20 µg/mL.

**APC6 Antibody - Additional Information**

Gene ID	8881
Target/Specificity	
CDC16;	

**Reconstitution & Storage**

APC6 antibody can be stored at 4°C for three months and -20°C, stable for up to one year. As with all antibodies care should be taken to avoid repeated freeze thaw cycles. Antibodies should not be exposed to prolonged high temperatures.

**Precautions**

APC6 Antibody is for research use only and not for use in diagnostic or therapeutic procedures.

**APC6 Antibody - Protein Information**

**Name** CDC16

**Synonyms** ANAPC6

**Function**

Component of the anaphase promoting complex/cyclosome (APC/C), a cell cycle-regulated E3 ubiquitin ligase that controls progression through mitosis and the G1 phase of the cell cycle. The APC/C complex acts by mediating ubiquitination and subsequent degradation of target proteins: it mainly mediates the formation of 'Lys-11'-linked polyubiquitin chains and, to a lower extent, the formation of 'Lys-48'- and 'Lys-63'-linked polyubiquitin chains.

**Cellular Location**

Cytoplasm, cytoskeleton, microtubule organizing center, centrosome. Cytoplasm, cytoskeleton, spindle. Note=Colocalizes with CDC27 to the centrosome at all stages of the cell cycle and to the

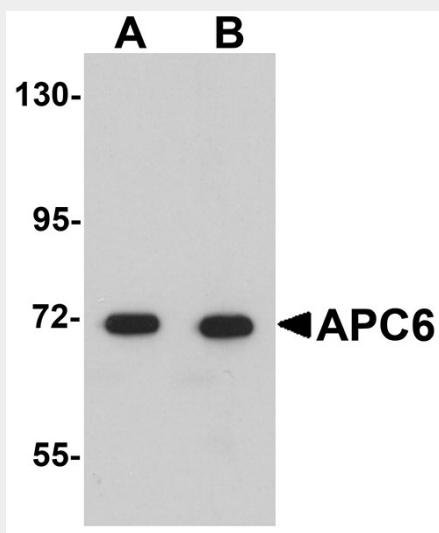
mitotic spindle

### APC6 Antibody - Protocols

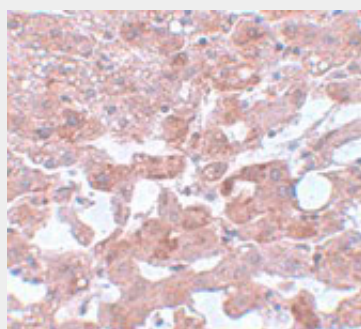
Provided below are standard protocols that you may find useful for product applications.

- [Western Blot](#)
- [Blocking Peptides](#)
- [Dot Blot](#)
- [Immunohistochemistry](#)
- [Immunofluorescence](#)
- [Immunoprecipitation](#)
- [Flow Cytometry](#)
- [Cell Culture](#)

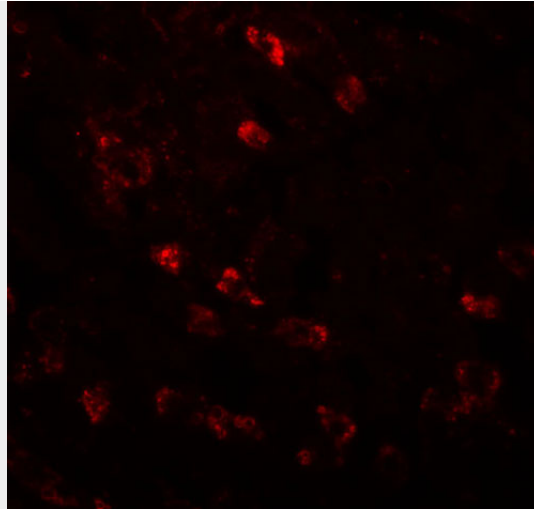
### APC6 Antibody - Images



Western blot analysis of APC6 in human liver tissue lysate with APC6 antibody at (A) 1 and (B) 2 µg/mL.



Immunohistochemistry of APC6 in human liver tissue with APC6 antibody at 5 µg/mL.



Immunofluorescence of APC6 in human liver tissue with APC6 antibody at 20 µg/mL.

### **APC6 Antibody - Background**

APC6 Antibody: Cell cycle regulated protein ubiquitination and degradation within subcellular domains is thought to be essential for the normal progression of mitosis. APC6 is a highly conserved component of the anaphase promoting complex/cyclosome (APC/C), a cell cycle-regulated E3 ubiquitin ligase that controls progression through mitosis and the G1 phase of the cell cycle. APC/C is responsible for degrading anaphase inhibitors, mitotic cyclins, and spindle-associated proteins ensuring that events of mitosis take place in proper sequence. The individual APC/C components mRNA and protein levels are expressed at approximately the same levels in most tissues and cell lines, suggesting that they perform their functions as part of a complex. While little is known of APC6, it has been shown to interact with and is stabilized by CDC26 through an intermolecular TPR mimic composed of one helix from each protein.

### **APC6 Antibody - References**

JM Peters. The anaphase promoting complex/cyclosome: a machine designed to destroy. Nat. Rev. Mol. Cell Biol.2006; 7:644-56.  
Jorgensen PM, Graslund S, Betz R, et al. Characterisation of the human APC1, the largest subunit of the anaphase-promoting complex. Gene2001; 262:51-9.  
Wang J, Dye BT, Rajashankar KR, et al. Insights into anaphase promoting complex TPR subdomain assembly from a CDC26-APC structure. Nat. Struct. Mol. Biol.2009; 16:987-9.