

ATP11B Antibody
Catalog # ASC11172**Specification**

ATP11B Antibody - Product Information

Application	WB, ICC, IF
Primary Accession	Q9Y2G3
Other Accession	NP_055431 , 62632750
Reactivity	Human, Mouse
Host	Rabbit
Clonality	Polyclonal
Isotype	IgG
Application Notes	ATP11B antibody can be used for detection of ATP11B by Western blot at 1 µg/mL. Antibody can also be used for immunocytochemistry starting at 10 µg/mL. For immunofluorescence start at 20 µg/mL.

ATP11B Antibody - Additional Information

Gene ID	23200
Target/Specificity	
ATP11B;	

Reconstitution & Storage

ATP11B antibody can be stored at 4°C for three months and -20°C, stable for up to one year. As with all antibodies care should be taken to avoid repeated freeze thaw cycles. Antibodies should not be exposed to prolonged high temperatures.

Precautions

ATP11B Antibody is for research use only and not for use in diagnostic or therapeutic procedures.

ATP11B Antibody - Protein Information

Name ATP11B

Synonyms ATPIF, ATPIR, KIAA0956

Function

Catalytic component of a P4-ATPase flippase complex which catalyzes the hydrolysis of ATP coupled to the transport of aminophospholipids, phosphatidylserines (PS) and phosphatidylethanolamines (PE), from the outer to the inner leaflet of intracellular membranes (PubMed:30018401). May contribute to the maintenance of membrane lipid asymmetry in endosome compartment (PubMed:30018401).

Cellular Location

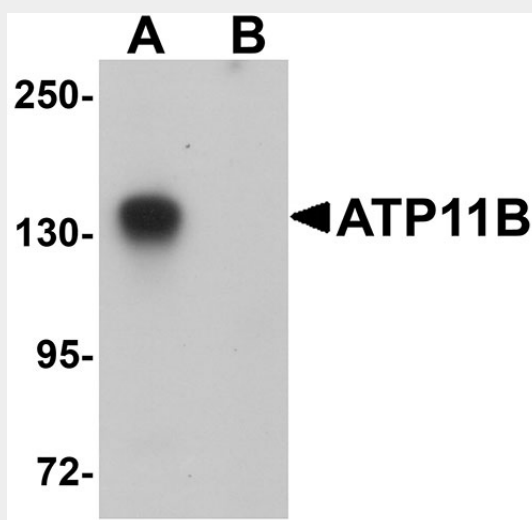
Recycling endosome membrane; Multi-pass membrane protein. Early endosome. Endoplasmic reticulum. Golgi apparatus, trans-Golgi network. Note=Exit from the endoplasmic reticulum requires the presence of TMEM30A, but not TMEM30B (PubMed:21914794). In the presence of TMEM30A, mainly located in recycling endosomes (PubMed:21914794).

ATP11B Antibody - Protocols

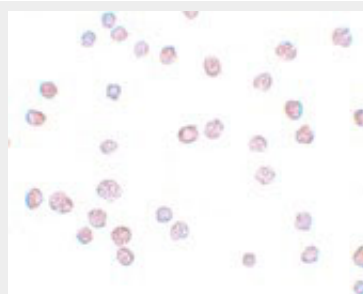
Provided below are standard protocols that you may find useful for product applications.

- [Western Blot](#)
- [Blocking Peptides](#)
- [Dot Blot](#)
- [Immunohistochemistry](#)
- [Immunofluorescence](#)
- [Immunoprecipitation](#)
- [Flow Cytometry](#)
- [Cell Culture](#)

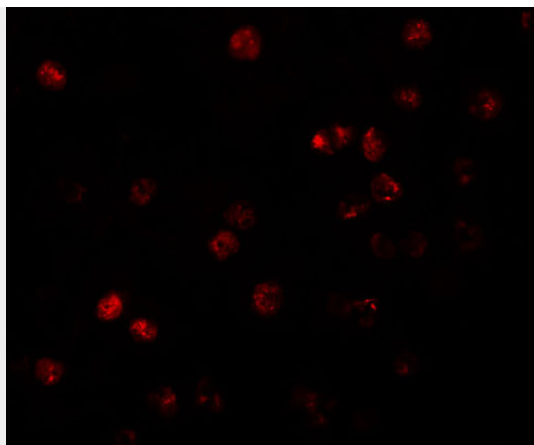
ATP11B Antibody - Images



Western blot analysis of ATP11B in K562 cell tissue lysate with ATP11B antibody at 1 μ g/mL in (A) the absence and (B) the presence of blocking peptide.



Immunocytochemistry of ATP11B in K562 cells with ATP11B antibody at 10 μ g/mL.



Immunofluorescence of ATP11B in K562 cells with ATP11B antibody at 20 µg/mL.

ATP11B Antibody - Background

ATP11B Antibody: ATP11B is a widely expressed integral membrane ATPase and is thought to drive the transport of phospholipids across membranes. It has been suggested that ATP11B is hormonally regulated and plays a role in the subnuclear trafficking of transcription factors with RING motifs. While the exact molecule ATP11B transports is unknown, increased mRNA expression of the homologous ATP11A has been observed in cells resistant to anti-cancer drugs such as farnesyltransferase inhibitors (FTIs), suggesting that ATP11B may also play a role in cell survival under harsh conditions.

ATP11B Antibody - References

Mansharamani M, Hewetson A, and Chilton BS. Cloning and characterization of an atypical Type IV P-type ATPase that binds to the RING motif of RUSH transcription factors. *J. Biol. Chem.*2001; 276:3641-9.

Halleck MS, Lawler JF Jr, Blackshaw S, et al. Differential expression of putative transbilayer amphipath transporters. *Physiol. Genomics*1999; 1:139-50.

Zhang B, Groffen J, and Heisterkamp N. Resistance to farnesyltransferase inhibitors in Bcr/Abl-positive lymphoblastic leukemia by increased expression of a novel ABC transporter homolog ATP11a. *Blood*2005; 106:1355-61.