

**NALP8 Antibody**  
**Catalog # ASC11197****Specification**

---

**NALP8 Antibody - Product Information**

Application	WB
Primary Accession	<a href="#">Q86W28</a>
Other Accession	<a href="#">NP_789781</a> , <a href="#">33667040</a>
Reactivity	Human
Host	Rabbit
Clonality	Polyclonal
Isotype	IgG
Application Notes	NALP8 antibody can be used for detection of NALP8 by Western blot at 1 µg/mL.

**NALP8 Antibody - Additional Information**

Gene ID	126205
<b>Target/Specificity</b>	
NLRP8;	

**Reconstitution & Storage**

NALP8 antibody can be stored at 4°C for three months and -20°C, stable for up to one year. As with all antibodies care should be taken to avoid repeated freeze thaw cycles. Antibodies should not be exposed to prolonged high temperatures.

**Precautions**

NALP8 Antibody is for research use only and not for use in diagnostic or therapeutic procedures.

**NALP8 Antibody - Protein Information**

**Name** NLRP8

**Synonyms** NALP8, NOD16, PAN4

**Function**

Involved in inflammation.

**Cellular Location**

Cytoplasm.

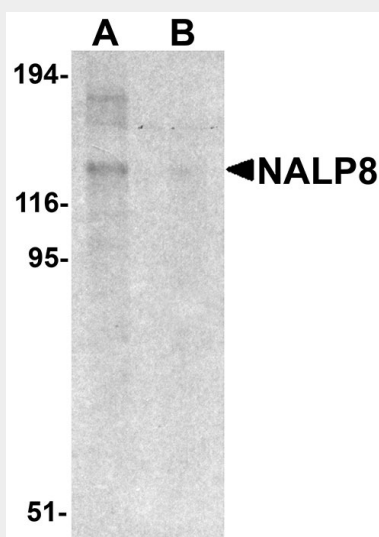
**NALP8 Antibody - Protocols**

Provided below are standard protocols that you may find useful for product applications.

- [Western Blot](#)

- [Blocking Peptides](#)
- [Dot Blot](#)
- [Immunohistochemistry](#)
- [Immunofluorescence](#)
- [Immunoprecipitation](#)
- [Flow Cytometry](#)
- [Cell Culture](#)

## NALP8 Antibody - Images



Western blot analysis of NALP8 in human colon tissue lysate with NALP8 antibody at 1 µg/mL in (A) the absence and (B) the presence of blocking peptide.

## NALP8 Antibody - Background

**NALP8 Antibody:** NALP proteins are cytoplasmic proteins that form a subfamily within the larger CATERPILLER family and are thought to play a crucial role in cell proliferation and reproduction. Like all other NALP family members, NALP8 has a C-terminal leucine-rich repeat (LRR) region, an N-terminal Pyrin domain (PYD) followed by a NACHT domain, and a NACHT-associated domain. It maps to chromosome 19q13.42 and is thought to be expressed in testis and ovary, suggesting that NALP8 may be involved in reproduction. Surprisingly, NALP8 seems to be universal in mammals except for rodents, suggesting that the gene may have been lost during evolution.

## NALP8 Antibody - References

Tschopp J, Martinon F, and Burns K. NALPs: a novel protein family involved in inflammation. *Nat. Rev. Mol. Cell Biol.*2003; 4:95-104.  
Tian X, Pascal G, and Monget P. Evolution and functional divergence of NLRP genes in mammalian reproductive system. *BMC Evol. Biol.*2009; 9:202.  
Ponsuksili P, Brunner RM, Goldammer T, et al. Bovine NALP5, NALP8, and NALP9 genes: assignment to a QTL region and the expression in adult tissues, oocytes, and preimplantation embryos. *Biol. Reprod.*2006; 74:577-84.