

NALP11 Antibody
Catalog # ASC11199**Specification**

NALP11 Antibody - Product Information

| | |
|-------------------|--|
| Application | WB, ICC, IF |
| Primary Accession | P59045 |
| Other Accession | NP_659444 , 194018484 |
| Reactivity | Human |
| Host | Rabbit |
| Clonality | Polyclonal |
| Isotype | IgG |
| Application Notes | NALP11 antibody can be used for detection of NALP11 by Western blot at 1 µg/mL. Antibody can also be used for immunocytochemistry starting at 2.5 µg/mL. For immunofluorescence start at 20 µg/mL. |

NALP11 Antibody - Additional Information

| | |
|--------------------|--------|
| Gene ID | 204801 |
| Target/Specificity | |
| NLRP11; | |

Reconstitution & Storage

NALP11 antibody can be stored at 4°C for three months and -20°C, stable for up to one year. As with all antibodies care should be taken to avoid repeated freeze thaw cycles. Antibodies should not be exposed to prolonged high temperatures.

Precautions

NALP11 Antibody is for research use only and not for use in diagnostic or therapeutic procedures.

NALP11 Antibody - Protein Information

Name NLRP11

Synonyms NALP11, NOD17, PAN10, PYPAF6

Function

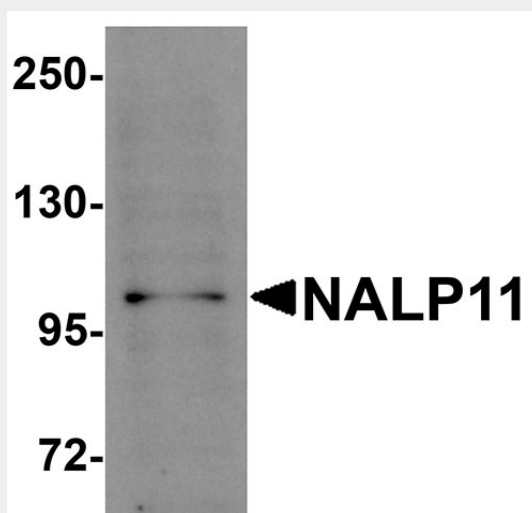
Involved in inflammation.

NALP11 Antibody - Protocols

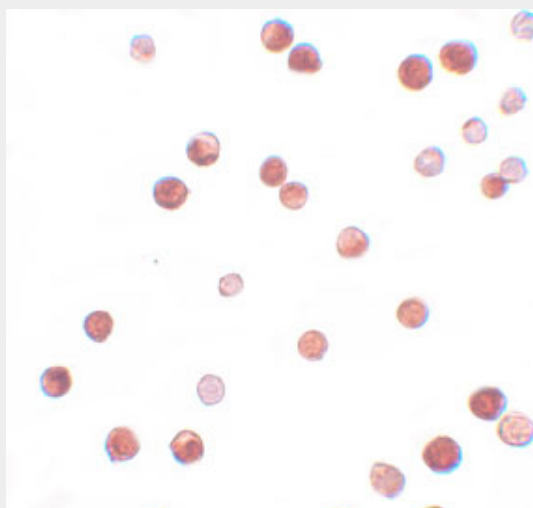
Provided below are standard protocols that you may find useful for product applications.

- [Western Blot](#)
- [Blocking Peptides](#)
- [Dot Blot](#)
- [Immunohistochemistry](#)
- [Immunofluorescence](#)
- [Immunoprecipitation](#)
- [Flow Cytometry](#)
- [Cell Culture](#)

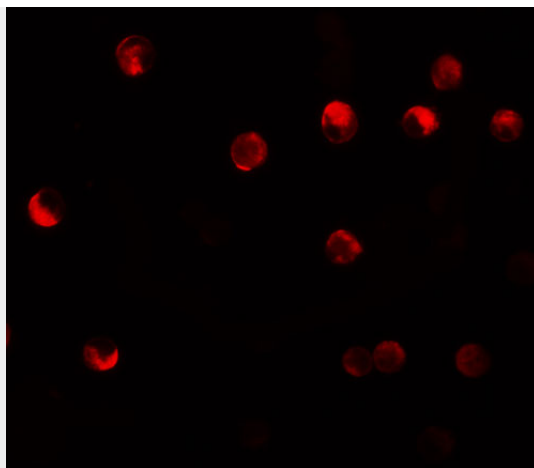
NALP11 Antibody - Images



Western blot analysis of NALP11 in HeLa cell lysate with NALP11 antibody at 1 μ g/mL.



Immunocytochemistry of NALP11 in HeLa cells with NALP11 antibody at 2.5 μ g/mL.



Immunofluorescence of NALP11 in HeLa cells with NALP11 antibody at 20 µg/mL.

NALP11 Antibody - Background

NALP11 Antibody: NALP proteins are cytoplasmic proteins that form a subfamily within the larger CATERPILLER family and are thought to play a crucial role in cell proliferation and reproduction. Like all other NALP family members, NALP11 has a C-terminal leucine-rich repeat (LRR) region, an N-terminal Pyrin domain (PYD) followed by a NACHT domain, and a NACHT-associated domain. While little is known about the function of NALP11, it has been suggested that it has been associated with Crohn's disease.

NALP11 Antibody - References

Tschopp J, Martinon F, and Burns K. NALPs: a novel protein family involved in inflammation. *Nat. Rev. Mol. Cell Biol.*2003; 4:95-104.
Tian X, Pascal G, and Monget P. Evolution and functional divergence of NLRP genes in mammalian reproductive system. *BMC Evol. Biol.*2009; 9:202.
Cummings JR, Cooney RM, Clarke G, et al. The genetics of NOD-like receptors in Crohn's disease. *Tiss. Antigens*2010; 76:48-56.