

PLAC2 Antibody
Catalog # ASC11220**Specification**

PLAC2 Antibody - Product Information

Application	WB, ICC, IF
Primary Accession	Q9NPR7
Other Accession	AAQ15237 , 33341732
Reactivity	Human
Host	Rabbit
Clonality	Polyclonal
Isotype	IgG
Application Notes	PLAC2 antibody can be used for detection of PLAC2 by Western blot at 1 - 2 µg/mL. Antibody can also be used for immunocytochemistry starting at 10 µg/mL. For immunofluorescence start at 20 µg/mL.

PLAC2 Antibody - Additional Information

Gene ID	257000
Target/Specificity	
PLAC2;	

Reconstitution & Storage

PLAC2 antibody can be stored at 4°C for three months and -20°C, stable for up to one year. As with all antibodies care should be taken to avoid repeated freeze thaw cycles. Antibodies should not be exposed to prolonged high temperatures.

Precautions

PLAC2 Antibody is for research use only and not for use in diagnostic or therapeutic procedures.

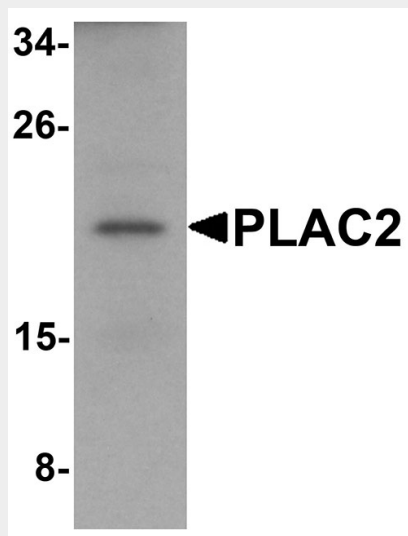
PLAC2 Antibody - Protein Information**PLAC2 Antibody - Protocols**

Provided below are standard protocols that you may find useful for product applications.

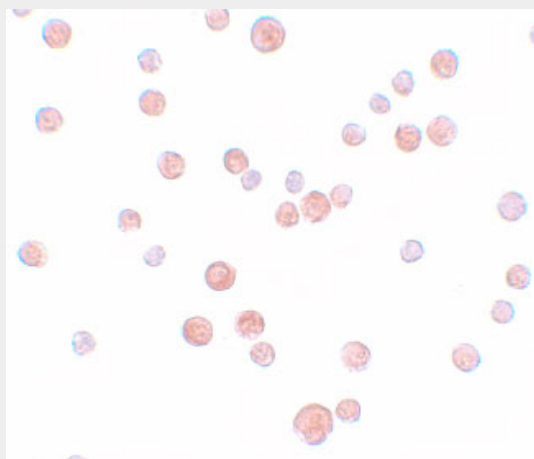
- [Western Blot](#)
- [Blocking Peptides](#)
- [Dot Blot](#)
- [Immunohistochemistry](#)
- [Immunofluorescence](#)
- [Immunoprecipitation](#)
- [Flow Cytometry](#)

- [Cell Culture](#)

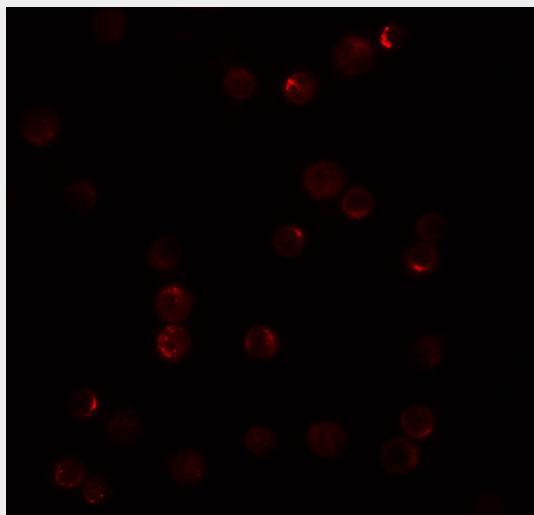
PLAC2 Antibody - Images



Western blot analysis of PLAC2 in HeLa cell lysate with PLAC2 antibody at 1 μ g/mL.



Immunocytochemistry of PLAC2 in HeLa cells with PLAC2 antibody at 10 μ g/mL.



Immunofluorescence of PLAC2 in HeLa cells with PLAC2 antibody at 20 µg/mL.

PLAC2 Antibody - Background

PLAC2 Antibody: PLAC2 (placenta-specific protein 2) is a 151 amino acid protein that is encoded by a gene located on human chromosome 19p13. Based on its amino acid sequence, PLAC2 is predicted to be a multi-pass membrane protein. There are no reported studies or functions reported for this protein.

PLAC2 Antibody - References