

**AXIN2 Antibody**  
**Catalog # ASC11272****Specification**

---

**AXIN2 Antibody - Product Information**

Application	WB
Primary Accession	<a href="#">Q9Y2T1</a>
Other Accession	<a href="#">AAF22799</a> , <a href="#">8313</a>
Reactivity	Human, Mouse, Rat
Host	Rabbit
Clonality	Polyclonal
Isotype	IgG
Calculated MW	85, 93 kDa KDa
Application Notes	AXIN2 antibody can be used for detection of AXIN2 by Western blot at 1 µg/mL. Antibody can also be used for immunohistochemistry starting at 5 µg/mL. For immunofluorescence start at 20 µg/mL.

**AXIN2 Antibody - Additional Information**Gene ID **8313****Target/Specificity**

AXIN2 antibody was raised against a 20 amino acid synthetic peptide near the carboxy terminus of human AXIN2. <br><br>The immunogen is located within amino acids 780 - 830 of AXIN2.

**Reconstitution & Storage**

AXIN2 antibody can be stored at 4°C for three months and -20°C, stable for up to one year. As with all antibodies care should be taken to avoid repeated freeze thaw cycles. Antibodies should not be exposed to prolonged high temperatures.

**Precautions**

AXIN2 Antibody is for research use only and not for use in diagnostic or therapeutic procedures.

**AXIN2 Antibody - Protein Information****Name** AXIN2**Function**

Inhibitor of the Wnt signaling pathway. Down-regulates beta- catenin. Probably facilitate the phosphorylation of beta-catenin and APC by GSK3B.

**Cellular Location**

Cytoplasm.

**Tissue Location**

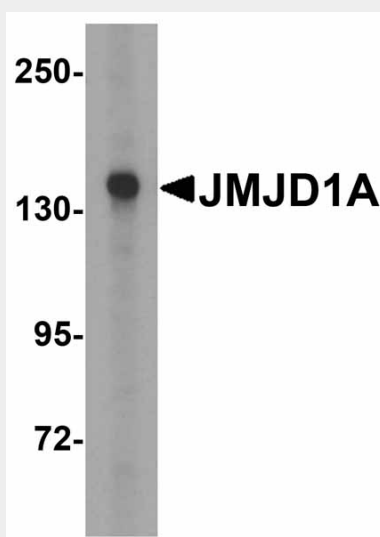
Expressed in brain and lymphoblast.

## AXIN2 Antibody - Protocols

Provided below are standard protocols that you may find useful for product applications.

- [Western Blot](#)
- [Blocking Peptides](#)
- [Dot Blot](#)
- [Immunohistochemistry](#)
- [Immunofluorescence](#)
- [Immunoprecipitation](#)
- [Flow Cytometry](#)
- [Cell Culture](#)

## AXIN2 Antibody - Images



Western blot analysis of JMJD1A in HepG2 cell lysate with JMJD1A antibody at 1 µg/mL.

## AXIN2 Antibody - Background

**AXIN2 Antibody:** Like the related protein AXIN1, AXIN2 is thought to play an important role in the regulation of the stability of beta-catenin in the Wnt signaling pathway. In mouse, AXIN2 organizes a multiprotein complex of APC (adenomatous polyposis of the colon), beta-catenin, glycogen synthase kinase 3-beta, and AXIN2, which leads to the degradation of beta-catenin, which is thought to be an important event in the genesis of a number of malignancies. The AXIN2 gene has been mapped to 17q23-q24, a region that shows frequent loss of heterozygosity in breast cancer, neuroblastoma, and other tumors. Mutations in this gene have been associated with colorectal cancer with defective mismatch repair.

## AXIN2 Antibody - References

- Katoh M and Katoh M. WNT signaling pathway and stem cell signaling network. Clin. Cancer Res.2007; 13:4042-5.
- Behrens J, Jerchow BA, Wurtele M, et al. Functional interaction of an axin homolog, conductin, with beta-catenin, APC, and GSK3beta. Science1998; 280:596-9.
- Hadjihannas MV and Behrens J. CIN by WNT: growth pathways, mitotic control and chromosome instability in cancer. Cell Cycle2006; 5:2077-81.
- Mai M, Qian C, Yokomizo A, et al. Cloning of the human homolog of conductin (AXIN2), a gene

mapping to chromosome 17q23-q24. Genomics1999; 55:341-4.