

ZNF346 (CT) Antibody
Catalog # ASC11287**Specification**

ZNF346 (CT) Antibody - Product Information

Application	WB, IHC, IF
Primary Accession	Q9UL40
Other Accession	NP_036411 , 6912440
Reactivity	Human, Mouse
Host	Rabbit
Clonality	Polyclonal
Isotype	IgG
Application Notes	ZNF346 antibody can be used for detection of ZNF346 by Western blot at 1 - 2 µg/mL. Antibody can also be used for immunohistochemistry starting at 5 µg/mL. For immunofluorescence start at 20 µg/mL.

ZNF346 (CT) Antibody - Additional InformationGene ID **23567****Target/Specificity**

ZNF346; ZNF346 antibody is predicted to not cross-react with other ZNF family members. Three isoforms of ZNF346 are known to exist; this antibody will recognize the two longest isoforms

Reconstitution & Storage

ZNF346 antibody can be stored at 4°C for three months and -20°C, stable for up to one year. As with all antibodies care should be taken to avoid repeated freeze thaw cycles. Antibodies should not be exposed to prolonged high temperatures.

Precautions

ZNF346 (CT) Antibody is for research use only and not for use in diagnostic or therapeutic procedures.

ZNF346 (CT) Antibody - Protein Information**Name** ZNF346**Synonyms** JAZ**Function**

Binds with low affinity to dsDNA and ssRNA, and with high affinity to dsRNA, with no detectable sequence specificity (PubMed:24521053). May bind to specific miRNA hairpins (PubMed:28431233).

Cellular Location

Nucleus, nucleolus. Cytoplasm. Note=Nuclear at steady state, primarily in the nucleolus. Shuttles

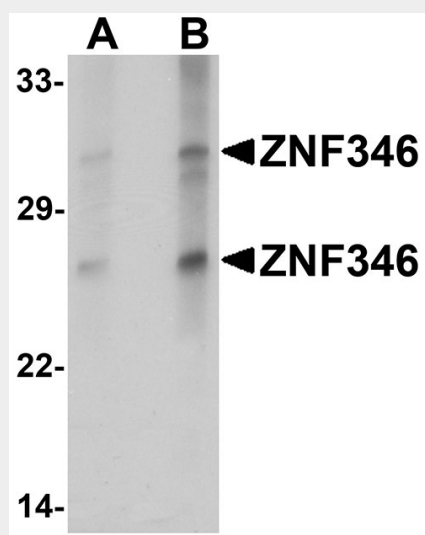
between the nucleus and cytoplasm when associated with XPO5

ZNF346 (CT) Antibody - Protocols

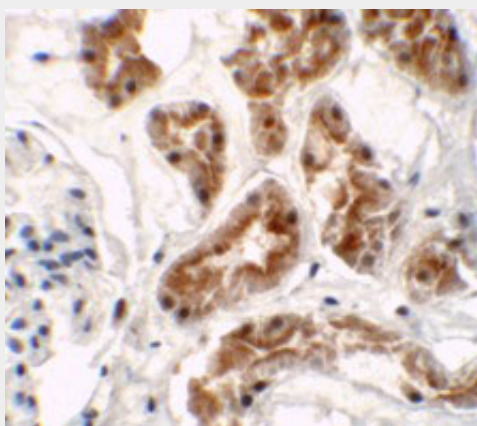
Provided below are standard protocols that you may find useful for product applications.

- [Western Blot](#)
- [Blocking Peptides](#)
- [Dot Blot](#)
- [Immunohistochemistry](#)
- [Immunofluorescence](#)
- [Immunoprecipitation](#)
- [Flow Cytometry](#)
- [Cell Culture](#)

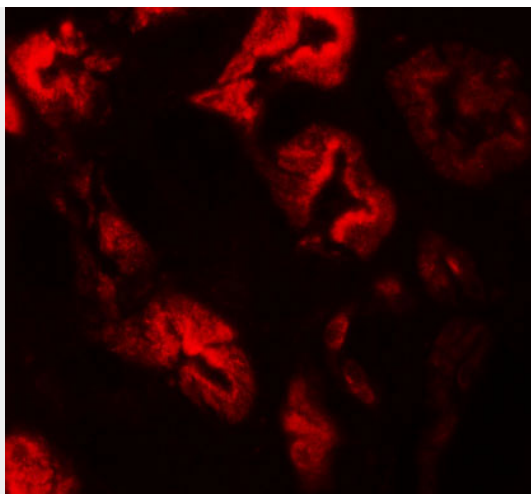
ZNF346 (CT) Antibody - Images



Western blot analysis of ZNF346 in human kidney tissue lysate with ZNF346 antibody at (A) 1 and (B) 2 μ g/mL.



Immunohistochemistry of ZNF346 (CT) in human kidney tissue with ZNF346 (CT) antibody at 5 μ g/mL.



Immunofluorescence of ZNF346 in human kidney tissue with ZNF346 antibody at 20 µg/mL.

ZNF346 (CT) Antibody - Background

ZNF346 (CT) Antibody: ZNF346, also known as JAZ (just another zinc-finger protein), is a nucleolar, zinc finger protein which preferentially binds to double-stranded (ds) RNA or RNA/DNA hybrids with high affinity via C2H2 zinc fingers. ZNF346 contains four CH-type zinc finger motifs that are connected by long (28-38) amino acid linker sequences. ZNF346 is expressed in all tissues tested and localizes to the nucleus, primarily the nucleolus. ZNF346 is exported by exportin-5 but translocates back into nuclei by a facilitated diffusion mechanism. ZNF346 interacts with ILF3 in an RNA-independent manner and may be involved in cell growth and survival.

ZNF346 (CT) Antibody - References

Rosenfeld R and Margalit H. Zinc fingers: conserved properties that can distinguish between spurious and actual DNA-binding motifs. *J. Biomol. Struct. Dyn.* 1993; 11:557-70.
Simpson JC, Wellenreuther R, Poustka A, et al. Systematic subcellular localization of novel proteins identified by large-scale cDNA sequencing. *EMBO Rep.* 2000; 1:287-92.
Yang M, May WS, and Ito T. JAZ requires the double-stranded RNA-binding zinc-finger motifs for nuclear localization. *J. Biol. Chem.* 1999; 274: 27399-406.
Chen T, Brownawell AM, and Macara IG. Nucleocytoplasmic shuttling of JAZ, a new cargo protein for Exportin 5. *Mol. Cell. Biol.* 2004; 24:6608-19.