

**RABEX5 Antibody**  
**Catalog # ASC11295****Specification**

---

**RABEX5 Antibody - Product Information**

Application	WB, IHC, IF
Primary Accession	<a href="#">O9UJ41</a>
Other Accession	<a href="#">NP_055319</a> , <a href="#">7657496</a>
Reactivity	Human, Mouse, Rat
Host	Rabbit
Clonality	Polyclonal
Isotype	IgG
Application Notes	RABEX5 antibody can be used for detection of RABEX5 by Western blot at 1 µg/mL. Antibody can also be used for immunohistochemistry starting at 5 µg/mL. For immunofluorescence start at 20 µg/mL.

**RABEX5 Antibody - Additional Information**Gene ID **27342****Target/Specificity**

RABGEF1; At least four isoforms of RABEX5 are known to exist; this antibody will recognize all four. RABEX5 antibody is predicted to not cross-react with other LRRFIP family members.

**Reconstitution & Storage**

RABEX5 antibody can be stored at 4°C for three months and -20°C, stable for up to one year. As with all antibodies care should be taken to avoid repeated freeze thaw cycles. Antibodies should not be exposed to prolonged high temperatures.

**Precautions**

RABEX5 Antibody is for research use only and not for use in diagnostic or therapeutic procedures.

**RABEX5 Antibody - Protein Information****Name** RABGEF1**Synonyms** RABEX5**Function**

Rab effector protein acting as linker between gamma-adaptin, RAB4A or RAB5A. Involved in endocytic membrane fusion and membrane trafficking of recycling endosomes. Stimulates nucleotide exchange on RAB5A. Can act as a ubiquitin ligase (By similarity).

**Cellular Location**

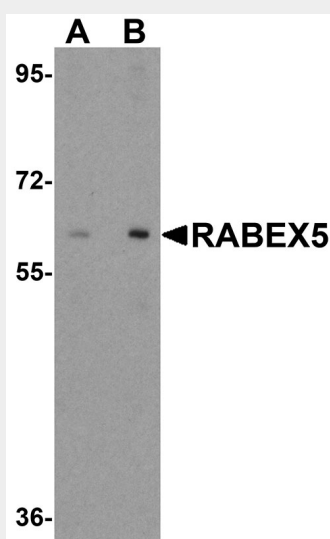
Cytoplasm. Early endosome. Recycling endosome

## RABEX5 Antibody - Protocols

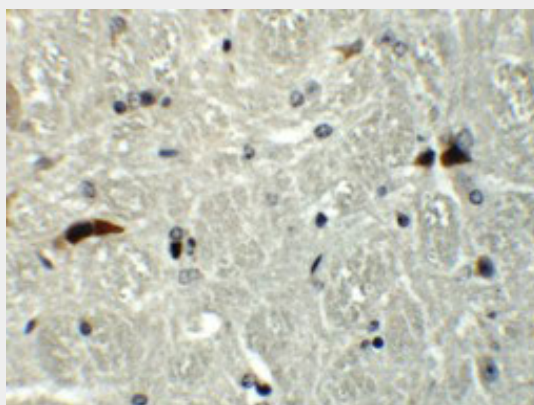
Provided below are standard protocols that you may find useful for product applications.

- [Western Blot](#)
- [Blocking Peptides](#)
- [Dot Blot](#)
- [Immunohistochemistry](#)
- [Immunofluorescence](#)
- [Immunoprecipitation](#)
- [Flow Cytometry](#)
- [Cell Culture](#)

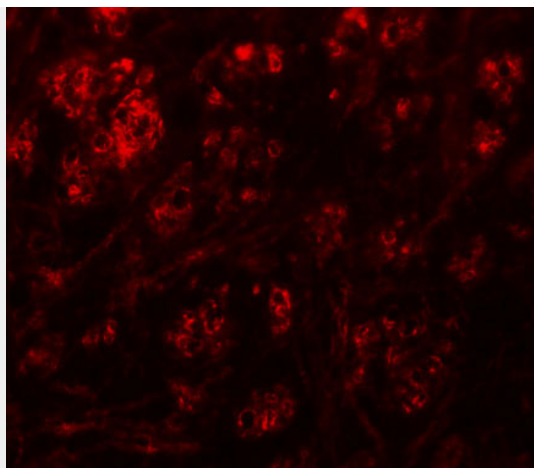
## RABEX5 Antibody - Images



Western blot analysis of RABEX5 in human liver tissue lysate with RABEX5 antibody at (A) 1 and (B) 2  $\mu$ g/mL.



Immunohistochemistry of RABEX5 in mouse brain tissue with RABEX5 antibody at 5  $\mu$ g/mL.



Immunofluorescence of RABEX5 in mouse brain tissue with RABEX5 antibody at 20 µg/mL.

#### **RABEX5 Antibody - Background**

**RABEX5 Antibody:** RABEX5 is a guanine nucleotide exchange factor (GEF) that forms a complex with rabaptin-5 and specifically activates Rab5, a small GTPase that plays an essential role in endocytic traffic. RABEX-5 is thought to also interact with another member of the Rab family, Rab22, which targets RABEX5 to early endosomes, allowing it to activate Rab5 and thereby promote Rab5-mediated endosome fusion.

#### **RABEX5 Antibody - References**

Horiuchi H, Lippe R, McBride HM, et al. A novel Rab5 GDP/GTP exchange factor complexed to Rabaptin-5 links nucleotide exchange to effector recruitment and function. *Cell* 1997; 90:1149-59.  
Zhu H, Liang Z, and Li G. Rabex-5 is a Rab22 effector and mediates a Rab22-Rab5 signaling cascade in endocytosis. *Mol. Biol. Cell* 2009; 20:4720-9.